

### Weather Forecaster model 13044



## CONTENTS

Unpacking Instructions .....	2	Using the Weather Forecaster... ..	9
Package Contents .....	2	Backlight Settings .....	10
Product Registration .....	2	USB Charging.....	11
Features & Benefits: Sensor.....	2	Troubleshooting .....	12
Features & Benefits: Display....	3	Care & Maintenance.....	13
Setup .....	5	Replace Intelli-Time® Battery ..	13
Sensor Setup .....	5	Specifications.....	14
Display Setup .....	6	FCC Information .....	14
Intelli-Time® Clock .....	7	Customer Support .....	15
Set the Time, Date & Units .....	7	Warranty.....	15
Placement Guidelines .....	8		

**Questions?** Contact Customer Support at  
(877) 221-1252 or visit [www.AcuRite.com](http://www.AcuRite.com).

**SAVE THIS MANUAL FOR FUTURE REFERENCE.**



Congratulations on your new AcuRite product. To ensure the best possible product performance, please read this manual in its entirety and retain it for future reference.

## Unpacking Instructions

Remove the protective film that is applied to the LCD screen prior to using this product. Locate the tab and peel off to remove.

## Package Contents

1. Display
2. Outdoor Sensor
3. Power Adapter
4. Instruction Manual

# IMPORTANT

PRODUCT MUST BE REGISTERED  
TO RECEIVE WARRANTY SERVICE

## PRODUCT REGISTRATION

Register online to receive 1 year warranty protection

[www.AcuRite.com](http://www.AcuRite.com)

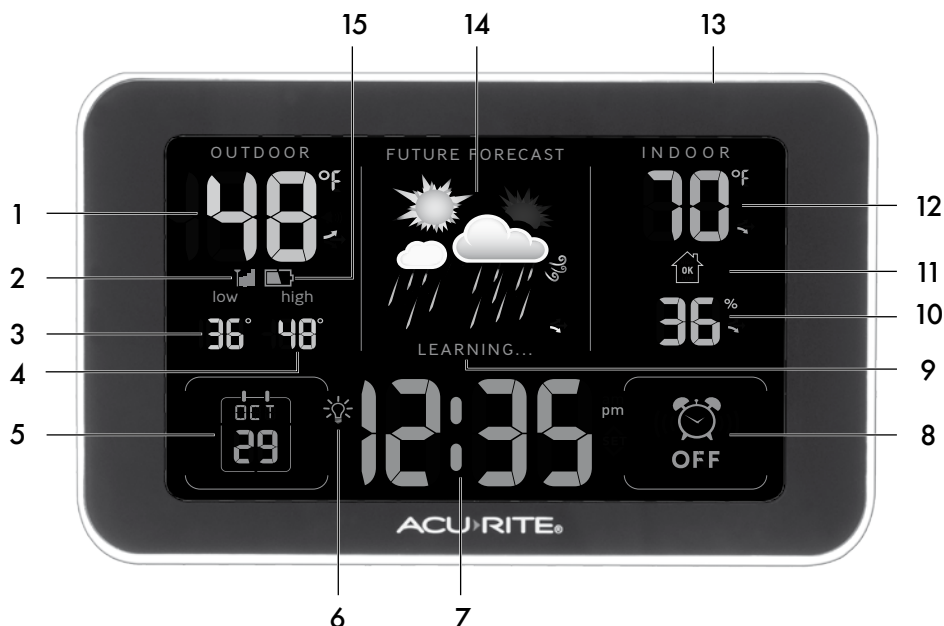
## Features & Benefits



## OUTDOOR SENSOR

- 1. Integrated Hanger**  
For easy placement.
- 2. Wireless Signal Indicator**  
Flashes when data is being sent to the display.
- 3. Battery Compartment**
- 4. A-B-C Switch**  
ID code that must match display's A-B-C switch to ensure units synchronize.
- 5. Battery Compartment Cover**

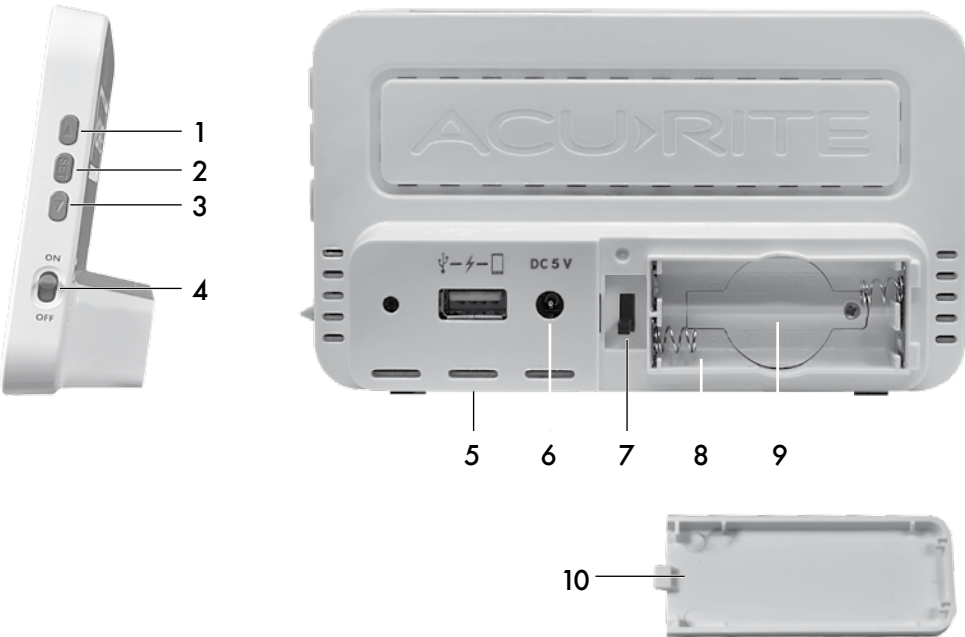
## Features & Benefits



### FRONT OF DISPLAY

- 1. Current Outdoor Temperature**  
Arrow icon indicates the direction temperature is trending.
- 2. Outdoor Sensor Signal Strength**
- 3. Outdoor Low Temperature Record**  
Lowest temperature recorded since midnight.
- 4. Outdoor High Temperature Record**  
Highest temperature recorded since midnight.
- 5. Date**
- 6. ☀ Icon**  
Indicates display is in auto-dimming brightness mode (see page 10).
- 7. Intelli-Time® Clock**  
Automatically updates itself for Daylight Saving Time.
- 8. 📞 Alarm ON/OFF Indicator**
- 9. Learning Mode Icon**  
Disappears after weather forecast self-calibration is complete.
- 10. Current Indoor Humidity**  
Arrow icon indicates the direction humidity is trending.
- 11. Humidity Level Icon**  
Indicates a high, low or ideal humidity comfort level.
- 12. Current Indoor Temperature**  
Arrow icon indicates the direction temperature is trending.
- 13. SNOOZE Button**
- 14. 12 to 24 Hour Weather Forecast**  
Self-Calibrating Forecasting pulls data from the outdoor sensor to generate your personal forecast.
- 15. Outdoor Sensor Low Battery Indicator**

# Features & Benefits



## SIDE OF DISPLAY

- 1. ▲ Button**  
For setup and backlight brightness preferences.
- 2. SET Button**  
For setup preferences.
- 3. ▼ Button**  
For setup and backlight brightness preferences.
- 4. Alarm ON/OFF Switch**

## BACK OF DISPLAY

- 5. USB Charger**  
For compatible smartphones.
- 6. Plug-in for Power Adapter**
- 7. A-B-C Switch**  
ID code that must match the sensor's A-B-C switch to ensure units synchronize.
- 8. Battery Compartment**
- 9. Intelli-Time® Battery Compartment**
- 10. Battery Compartment Cover**

## Sensor Setup

### 1 Set the A-B-C Switch

The A-B-C switch is located inside the battery compartment. It can be set to A, B or C. However, you must select the same letter choices for both the sensor and the display in order for the units to synchronize.

### 2 Install or Replace Batteries

AcuRite recommends high quality alkaline or lithium batteries for the best product performance. Heavy duty or rechargeable batteries are not recommended.

The sensor requires lithium batteries in low temperature

conditions. Cold temperatures can cause alkaline batteries to function improperly. Use lithium batteries in the sensor for temperatures below -4°F / -20°C.

1. Slide off the battery compartment cover. Take note of the A-B-C switch setting inside the battery compartment for display setup.
2. Insert 2 x AA batteries into the battery compartment, as shown. Follow the polarity (+/-) diagram in the battery compartment.
3. Replace the battery cover.



LITHIUM  
BATTERIES

4

F

4

C

(70°C)

158°F

ALKALINE  
BATTERIES

4

F

2

C

(70°C)

158°F

# Display Setup

## 1 Set the A-B-C Switch

Locate the A-B-C switch inside the battery compartment. Set the A-B-C switch to A, B or C. You must select the same letter choices for both the display and the sensor in order for the units to synchronize.

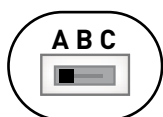
## 2 Plug in Power Adapter

For the best performance, plug in the power adapter as the main power source for this product.

## 3 Install or Replace Backup Batteries (optional)

1. Remove the battery compartment cover.
2. Insert 2 x AAA alkaline batteries into the battery compartment, as shown. Follow the polarity (+/-) diagram in the battery compartment.
3. Replace the battery cover.

### 1 A-B-C Switch Set to match sensor



### 2 Plug in Power Adapter



### 3 Install Backup Batteries (optional) 2 AAA alkaline batteries



**IMPORTANT:** Batteries are a backup power source to preserve records in the event of a power outage. **Power adapter recommended as the primary power source to enjoy the full functionality of the product.**



**PLEASE DISPOSE OF OLD OR DEFECTIVE BATTERIES IN AN ENVIRONMENTALLY SAFE WAY AND IN ACCORDANCE WITH YOUR LOCAL LAWS AND REGULATIONS.**

**BATTERY SAFETY:** Clean the battery contacts and also those of the device prior to battery installation. Remove batteries from equipment that will not be used for an extended period of time. Follow the polarity (+/-) diagram in the battery compartment. Promptly remove dead batteries from the device. Dispose of used batteries properly. Only batteries of the same or equivalent type as recommended are to be used. DO NOT incinerate used batteries. DO NOT dispose of batteries in fire, as batteries may explode or leak. DO NOT mix old and new batteries or types of batteries (alkaline/standard). DO NOT use rechargeable batteries. DO NOT recharge non-rechargeable batteries. DO NOT short-circuit the supply terminals.

## **Intelli-Time® Clock**

Intelli-Time products are pre-programmed with the correct time and date. Intelli-Time technology instructs the time and date to set themselves. All you need to do is select your Time Zone and Daylight Saving Time preferences. The clock will then automatically set itself and change for Daylight Saving Time.

### **Set the Time, Date & Units**

Press and HOLD the "SET" button, located on the side of the display until "SELECT TIME ZONE" appears, to enter SET MODE. Once in SET MODE, the preference you are currently setting will flash on the display.

To adjust the currently selected (flashing) item, press and release the "▲" or "▼" buttons (press and HOLD to fast adjust).

To save your adjustments, press and release the "SET" button to adjust the next preference. The preference set order is as follows:

TIME ZONE (PST MST CST EST AST HAT AKT NST)

AUTO DST (ON or OFF)\*

CLOCK HOUR

CLOCK MINUTE

CALENDAR MONTH

CALENDAR DATE

CALENDAR YEAR

TEMPERATURE UNITS (°F or °C)

\*If you live in an area that observes Daylight Saving Time, DST should be set to ON, even if it is not currently Daylight Saving Time.

You will automatically exit SET MODE if no buttons are pressed for 5 seconds. Enter SET MODE at any time by pressing and holding the "SET" button until "SELECT TIME ZONE" appears on the display.

### **Set the Alarm Time**

To set the alarm time, press and RELEASE the "SET" button to enter ALARM SET MODE.

To adjust the currently selected (flashing) item, press and release the "▲" or "▼" buttons (press and HOLD to fast adjust).

To save your adjustments, press and release the "SET" button to adjust the next preference. The preference set order is as follows:

ALARM CLOCK HOUR (Please note AM/PM indicator)

ALARM CLOCK MINUTE

You will automatically exit ALARM SET MODE if no buttons are pressed for 5 seconds. Enter ALARM SET MODE at any time by pressing and RELEASING the "SET" button.

Enable the alarm by sliding the ON/OFF switch (located on the side of the display) to ON.

## Placement for Maximum Accuracy

AcuRite sensors are sensitive to surrounding environmental conditions. Proper placement of both the display and outdoor sensor are critical to the accuracy and performance of this product.



### Display Placement

Place display in a dry area free of dirt and dust. To help ensure an accurate indoor temperature measurement, be sure to place the display away from heat sources or vents.



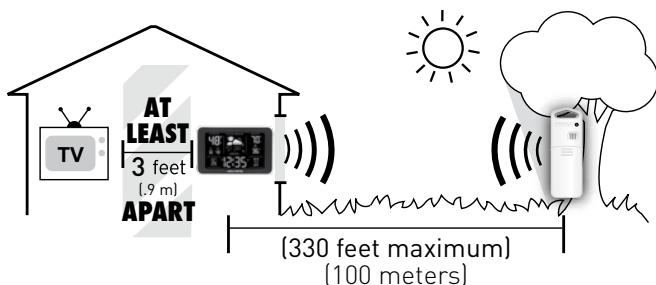
### Outdoor Sensor Placement

Sensor must be placed outside to observe outdoor conditions. Sensor is water resistant and is designed for general outdoor use, however, to extend its life place the sensor in an area protected from direct weather elements.

Hang the sensor using the integrated hang holes or hanger, or by using string (not included) to hang it from a suitable location, like a well covered tree branch. The best location is 4 to 8 feet above the ground with permanent shade and plenty of fresh air to circulate around the sensor.

## Important Placement Guidelines

- To ensure accurate temperature measurement, place units out of direct sunlight and away from any heat sources or vents.
- Display and outdoor sensor must be within 330 ft (100 m) of each other.
- To maximize wireless range, place units away from large metallic items, thick walls, metal surfaces, or other objects that may limit wireless communication.
- To prevent wireless interference, place both units at least 3 ft (.9 m) away from electronic devices (TV, computer, microwave, radio, etc.).



## Setup is Complete

The sensor will now synchronize with the display. It may take a few minutes for synchronization to complete.



## Using the Weather Forecaster

### Learning Mode

Self-Calibrating Forecasting use a unique algorithm to analyze changes in pressure over a time period (called Learning Mode) to determine your altitude. After 14 days, the Learning Mode icon disappears from the display screen. At this point, the self-calibrated pressure is tuned in to your location and the unit is ready for superior weather prediction.

### Weather Forecast

AcuRite's patented Self-Calibrating Forecasting provides your personal forecast of weather conditions for the next 12 to 24 hours by collecting data from the sensor in your backyard. It generates a forecast with pinpoint accuracy - personalized for your exact location.



View the complete list of icons at [www.AcuRite.com/acurite-icons](http://www.AcuRite.com/acurite-icons)

### Weather Trend

Subtle variations in barometric pressure greatly impact the weather. This weather forecaster displays an arrow icon under the forecast to indicate the direction the pressure is trending (FALLING, STEADY, or RISING).

# Alarm Clock SNOOZE

The alarm clock will sound, increasing in volume over a 2 minute period. When the alarm is sounding, press the "SNOOZE" button to activate the SNOOZE function for 10 minutes. The SNOOZE function can be activated up to 10 times.

## Backlight Settings

This weather forecaster's color display features 6 different lighting settings: 100% (High), 70%, 50% (Medium), 30%, 10% and 5% (Low) brightness.

When the display is powered with the power adapter, the backlight remains on at 100% brightness by default. Press the "SNOOZE" button at any time to momentarily light the display at 100% brightness. After 5 seconds, the display will return to the user-selected brightness setting.




The backlight is available momentarily for 10 seconds by pressing the "SNOOZE" button.

Manually adjust the backlight brightness by pressing and releasing the "▲" or "▼" buttons when not in SET MODE or ALARM SET MODE. Press the "▼" button a sixth time to enter "AUTO DIM" mode. "☀️" will appear to the left of the clock.

<b>AUTO DIM MODE:</b> Automatically adjusts display brightness based on time of day.
7:00 a.m. - 9:00 p.m. = 100% brightness
9:01 p.m. - 6:59 a.m.= 5% brightness

## Humidity Level Icon

The Humidity Level Icon easily conveys a low, high or ideal indoor humidity level for your home and health:

	<b>LOW Humidity Level</b> Humidity is low relative to temperature. Makes for a <b>DRY</b> environment.		<b>OK Humidity Level</b> Humidity is OK relative to temperature. Makes for an <b>IDEAL</b> environment.		<b>HIGH Humidity Level</b> Humidity is high relative to temperature. Makes for a <b>HUMID</b> environment.
--	--	---	---	---	--

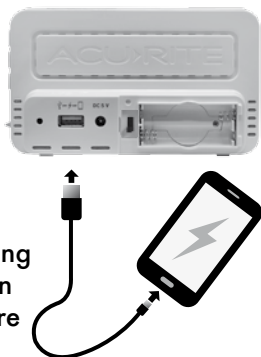
Learn more at <http://www.acurite.com/humidity-health>

## USB Charging


Charge your mobile device by plugging your device's USB power cord (not included) into the USB charging port on the back of the display.

The display must be powered by the power adapter to use the USB charger.

**NOTE:** Follow the manufacturer's instructions for your mobile device(s) to determine compatibility with the USB charging feature on this product. Some devices may not support USB charging or may require a higher power rating than this product provides. Observe the charging status on your device. Ensure your device is working properly before attempting to charge.



# Troubleshooting

Problem	Possible Solution
<p><b>No outdoor sensor reception</b></p>  no bars	<p>If the wireless signal indicator shows no bars:</p> <ul style="list-style-type: none"> <li>Relocate the display and/or the outdoor sensor. The units must be within 330 ft (100 m) of each other.</li> <li>Make sure both units are placed at least 3 feet (.9 m) away from electronics that may interfere with the wireless communication (such as TVs, microwaves, computers, etc).</li> <li>Use standard alkaline batteries (or lithium batteries in sensor when temperature is below -4°F/-20°C). Do not use heavy duty or rechargeable batteries. <b>NOTE:</b> It may take a few minutes for display and sensor to synchronize after batteries are replaced.</li> </ul>
<p><b>Display is too dark, hard to read or doesn't work</b></p>	<ul style="list-style-type: none"> <li>Verify power adapter is plugged in.</li> <li>Adjust the backlight brightness by using the ▲ or ▼ buttons (see page 10).</li> <li>The optimum viewing angle for this product is from slightly above it.</li> </ul>
<p><b>The unit lost power or batteries were changed and the time is not correct</b></p>	<ul style="list-style-type: none"> <li>The Intelli-Time battery needs to be replaced (see page 13). Once the new battery is installed, time and date will need to be set manually.</li> </ul>
<p><b>Inaccurate temperature</b></p>	<ul style="list-style-type: none"> <li>Make sure both the display and sensor are placed out of direct sunlight and away from any heat sources or vents (see page 8).</li> </ul>
<p><b>Outdoor temperature is flashing or showing dashes</b></p>	<p>Flashing of the outdoor temperature is generally an indication of wireless interference.</p> <ol style="list-style-type: none"> <li>Bring both the sensor and display indoors, side by side and remove power adapter/batteries from each.</li> <li>Make sure the A-B-C switch on both units match.</li> <li>Reinstall batteries in outdoor sensor.</li> <li>Reinstall power adapter/batteries in display.</li> <li>Let the units sit within a couple feet of each other for a few minutes to gain a strong connection.</li> </ol>
<p><b>If your AcuRite product does not operate properly after trying the troubleshooting steps, visit <a href="http://www.AcuRite.com">www.AcuRite.com</a> or call (877) 221-1252 for assistance.</b></p>	

## Care & Maintenance

### Display Care

Clean with a soft, damp cloth. Do not use caustic cleaners or abrasives. Keep away from dust, dirt and moisture. Clean ventilation ports regularly with a gentle puff of air.

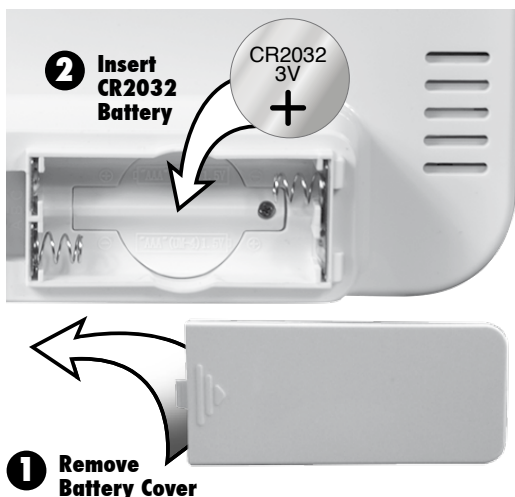
### Outdoor Sensor Care

Clean with a soft damp cloth. Do not use caustic cleaners or abrasives.

## Replace Intelli-Time® Clock Battery

Intelli-Time® technology is powered by a pre-installed coin-cell battery that stores the time and date settings. The battery has a shelf life of several years. Time and date will need to be entered after replacing Intelli-Time battery. To replace the Intelli-Time battery:

1. Locate the coin cell battery compartment door in the battery compartment of the display. Unscrew and remove the compartment cover.
2. Insert 1 x CR2032 coin cell battery into the battery compartment, as shown. Install battery with "+" positive terminal facing OUT.
3. Screw in the battery cover.



**WARNING: THIS PRODUCT CONTAINS A BUTTON-CELL BATTERY. IF SWALLOWED, IT COULD CAUSE SEVERE INJURY OR DEATH IN JUST 2 HOURS. SEEK MEDICAL ATTENTION IMMEDIATELY IF INGESTED.**



# Specifications

<b>TEMPERATURE RANGE</b>	Outdoor: -40°F to 158°F; -40°C to 70°C
	Indoor: 32°F to 122°F; 0°C to 50°C
<b>HUMIDITY RANGE</b>	Indoor: 1% to 99% RH
<b>WIRELESS RANGE</b>	330 ft / 100 m depending on home construction materials
<b>OPERATING FREQUENCY</b>	433 MHz
<b>POWER</b>	Display: 5v power adapter 2 x AAA alkaline batteries (for backup; optional) 1 x CR2032 coin cell battery
	Sensor: 2 x AA alkaline or lithium batteries
	USB: 2.1A output
<b>DATA REPORTING</b>	Outdoor data: 16 second updates Indoor data: 60 second updates

# FCC Information

This device complies with part 15 of FCC rules. Operation is subject to the following two conditions:

- 1- This device may NOT cause harmful interference, and
- 2- This device must accept any interference received, including interference that may cause undesired operation.

WARNING: Changes or modifications to this unit not expressly approved by the party responsible for compliance could void the user's authority to operate the equipment.

NOTE: This equipment has been tested and found to comply with the limits for a Class B digital device, pursuant to Part 15 of the FCC rules. These limits are designed to provide reasonable protection against harmful interference in a residential installation. This equipment generates, uses and can radiate radio frequency energy and, if not installed and used in accordance with the instructions, may cause harmful interference to radio communications. However, There is no guarantee that interference will not occur in a particular installation. If this equipment does cause harmful interference to radio or television reception, which can be determined by turning the equipment off and on, the user is encouraged to try to correct the interference by one or more of the following measures:

- Reorient or relocate the receiving antenna.
- Increase the separation between the equipment and the receiver.
- Connect the equipment into an outlet on a circuit different from that to which the receiver is connected.
- Consult the dealer or an experienced radio/TV technician for help.

NOTE: The manufacturer is not responsible for any radio or TV interference caused by unauthorized modifications to this equipment. Such modifications could void the user authority to operate the equipment.

This device complies with Industry Canada licence-exempt RSS standard(s).

Operation is subject to the following two conditions:

- (1) This device may not cause interference, and
- (2) This device must accept any interference received, including interference that may cause undesired operation of the device.

## Customer Support

Acureite customer support is committed to providing you with best-in-class service. **For assistance**, please have the model number of this product available and contact us in any of the following ways:



(877) 221-1252

Visit us at **www.Acureite.com**

- ▶ Installation Videos
- ▶ Register your Product
- ▶ Support User Forum
- ▶ Submit Feedback & Ideas

## IMPORTANT

PRODUCT MUST BE REGISTERED  
TO RECEIVE WARRANTY SERVICE

### PRODUCT REGISTRATION

Register online to receive 1 year warranty protection

**www.Acureite.com**

## Limited 1-Year Warranty

Acureite is a wholly owned subsidiary of Chaney Instrument Company. For purchases of Acureite products, Acureite provides the benefits and services set forth herein. For purchases of Chaney products, Chaney provides the benefits and services set forth herein.

We warrant that all products we manufacture under this

warranty are of good material and workmanship and, when properly installed and operated, will be free of defects for a

period of one year from the date of purchase.

Any product which, under normal use and service, is proven to breach the warranty contained herein within ONE YEAR

from date of sale will, upon examination by us, and at our sole option, be repaired or replaced by us. Transportation costs and

charges for returned goods shall be paid for by the purchaser.

We hereby disclaim all responsibility for such transportation costs and charges. This warranty will not be breached, and we

will give no credit for products which have received normal wear and tear not affecting the functionality of the product,

been damaged (including by acts of nature), tampered, abused, improperly installed, or repaired or offered by others

than our authorized representatives.

Remedy for breach of this warranty is limited to repair or replacement of the defective item(s). If we determine that repair

of the amount of the original purchase price.

THE ABOVE-DESCRIBED WARRANTY IS THE SOLE WARRANTY

FOR THE PRODUCTS AND IS EXPRESSLY IN LIEU OF ALL OTHER

WARRANTIES, EXPRESS OR IMPLIED, ALL OTHER WARRANTIES

OTHER THAN THE EXPRESS WARRANTY SET FORTH HEREIN

ARE HEREBY EXPRESSLY DISCLAIMED, INCLUDING WITHOUT

LIMITATION THE IMPLIED WARRANTY OF MERCHANTABILITY

AND THE IMPLIED WARRANTY OF FITNESS FOR A PARTICULAR

PURPOSE.

This Return, Refund, and Warranty Policy is governed by the laws of the United States and the State of Wisconsin. Any dispute relating to this Policy shall be brought exclusively in the federal or State courts having jurisdiction in Walworth County, Wisconsin, and purchaser consents to jurisdiction within the State of Wisconsin.

### Governing Law

Additionally, this Policy applies only to the original purchaser of our products. We cannot and do not offer any return, refund, or warranty services if you buy products used or from resale sites such as eBay or Craigslist.

Canada, please consult the policies applicable to the country in which you made your purchase.

### Applicability of Policy

original purchase price paid for the product.

In no case shall our liability for any claim relating to our products, your purchase or your use thereof, exceed the

writing and signed by a duly authorized agent of ours.

Furthermore, no person, firm or corporation is authorized to modify or waive the terms of this warranty unless done in writing and signed by a duly authorized agent of ours.

or liability in connection with the sale of our products. For purchases made in a country other than the United States or

any of our products, the purchaser assumes all liability for the consequences arising from their use or misuse. No person, firm

Our products to the extent permitted by law. By acceptance of our products to the extent permitted by law. By acceptance of

We further disclaim liability from personal injury relating to our products to the extent permitted by law. By acceptance of

so the above limitation or exclusion may not apply to you.

excision or limitation of this warranty. Some states do not allow the

of incidental damages, whether arising in tort or by contract

We expressly disclaim all liability for special, consequential,

# ACU RITE®



Weather  
Stations



Temperature  
& Humidity



Weather  
Alert Radio



Kitchen  
Thermometers  
& Timers



Clocks

*It's more than accurate, it's **ACU RITE**®.*

AcuRite offers an extensive assortment of precision instruments,  
designed to provide you with information you can depend on to  
Plan your day with confidence™.

**[www.AcuRite.com](http://www.AcuRite.com)**

©Chaney Instrument Co. All rights reserved. AcuRite is a registered trademark of the Chaney Instrument Co., Lake Geneva, WI 53147. All other trademarks and copyrights are the property of their respective owners. AcuRite uses patented technology. Visit [www.AcuRite.com/patents](http://www.AcuRite.com/patents) for details.