

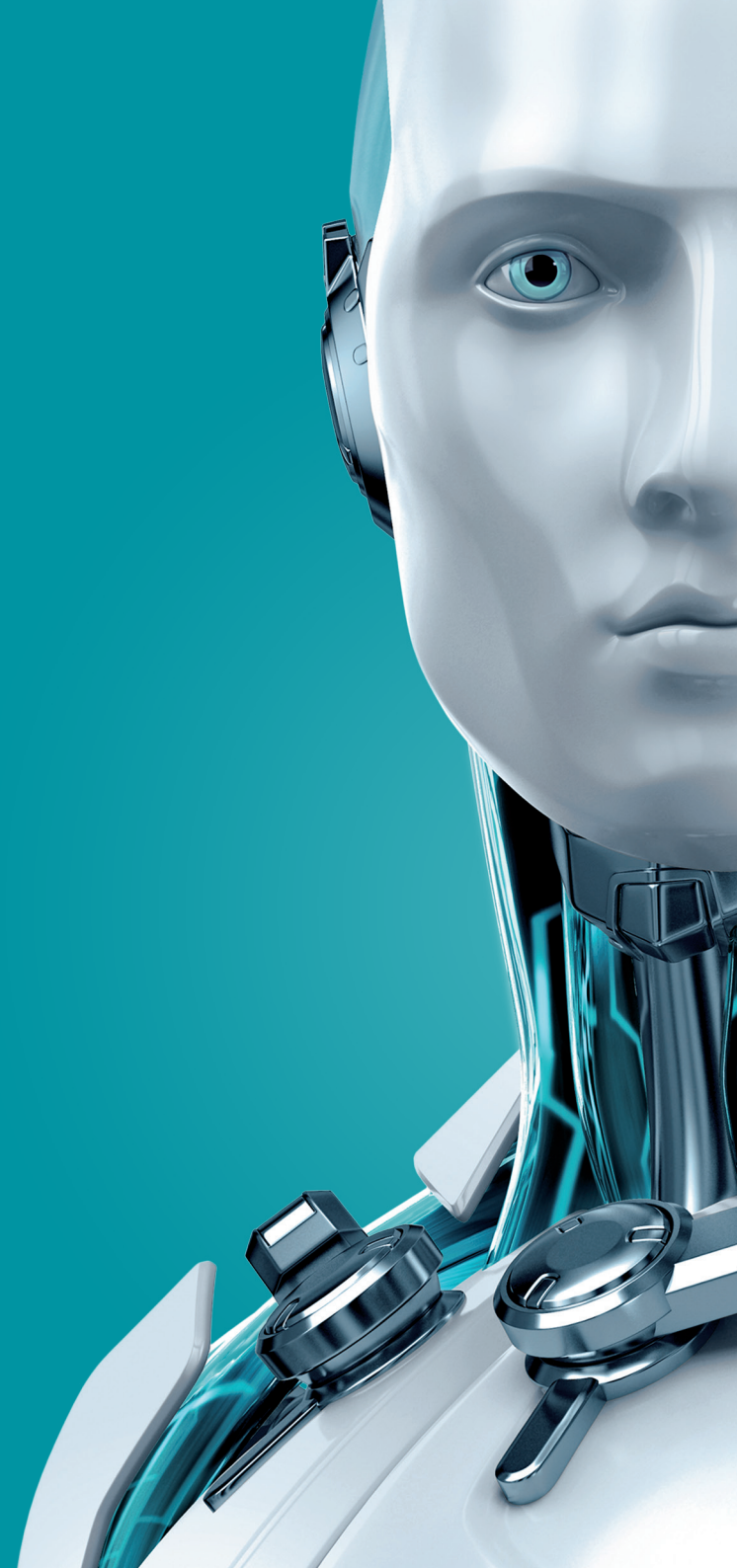


# INTERNET SECURITY

Advanced protection against all kinds of threats



**2023**  
EDITION





INTERNET  
SECURITY

Ideal for modern users concerned about their privacy, who actively use the internet for shopping, banking, work and communication.



### Legendary antivirus technology

Multilayered security protects you against all types of online and offline threats and prevents malware spreading to other users.



### Banking and privacy secured

Prevent unauthorized access to your computer and misuse of your data. Stay safe while making online payments and accessing e-wallets.



### Protect your IoT and webcam

Test your home router and smart devices for vulnerabilities. See and block any unexpected access to your webcam.

**110M+**

protected users worldwide

**100+**

prestigious VB100 awards

**30+**

years of cutting-edge cybersecurity

### Award-winning protection

ESET ranks among the best in the industry, as evidenced by our multiple awards and certifications from organizations like AV-TEST and AV-Comparatives.

### State-of-the-art technology

Advanced Machine Learning, DNA Detections and a cloud-based reputation system are just some of the cutting-edge tools developed in our 13 R&D centers.

### Made in the European Union

ESET values, like integrity, social responsibility and independence, all stem from our European roots and are safeguarded by our private ownership structure.



## Making the internet safer for you to enjoy

Explore the great online, securely protected by ESET's award-winning detection technology. It's trusted by over 110 million users worldwide to detect and neutralize all types of digital threats, including viruses, ransomware, rootkits, worms and spyware. It also protects against techniques that seek to evade detection, and blocks targeted attacks and exploits. At the same time, its Anti-Phishing feature protects you from illegitimate websites that try to access your sensitive information, such as usernames and passwords.

## Enjoy the full power of your computer

Leaving more power to the programs you use daily, ESET Internet Security lets you play, work and browse the internet without slowdowns. Stay unplugged and online longer with battery-saving mode, and enjoy gaming without distracting pop-ups.

<b>Antivirus and Antispyware</b>	Provides proactive protection against all types of online and offline threats and prevents malware spreading to other users.
<b>Advanced Machine Learning</b>	In addition to ESET Machine Learning in the cloud, this proactive layer runs locally. It is specifically designed to detect advanced, never-before-seen malware, while having a low impact on performance.
<b>Exploit Blocker</b>	Blocks attacks specifically designed to evade antivirus detection, and eliminates lockscreens and ransomware. Protects against attacks on web browsers, PDF readers and other applications, including Java-based software.
<b>Advanced Memory Scanner</b>	Enables improved detection of persistent malware that employs multiple layers of encryption to conceal its activity.
<b>Cloud-Powered Scanning</b>	Speeds up scans by whitelisting safe files based on the ESET LiveGrid® file reputation database. Helps to proactively stop unknown malware based on its behavior, by comparing it with our cloud-based reputation system.
<b>Scan While Downloading Files</b>	Decreases scanning time by scanning specific file types – such as archives – during the download process.
<b>Idle-State Scanning</b>	Aids system performance by performing in-depth scans when your computer is not in use. Helps detect potential inactive threats before they can cause damage.
<b>Host-Based Intrusion Prevention System (HIPS)</b>	Lets you customize the behavior of the system in greater detail, with a focus on behavioral detection. Gives you the option to specify rules for system registry, active processes and programs in order to fine-tune your security posture. Employs the latest tracing capabilities to scan parts of memory that can be modified by sophisticated malware injection techniques.
<b>Script-Based Attack Protection</b>	Detects attacks by malicious scripts that try to exploit Windows PowerShell. Also detects malicious JavaScripts that can attack via your browser. Mozilla Firefox, Google Chrome, Microsoft Internet Explorer and Microsoft Edge browsers are all supported.
<b>UEFI Scanner</b>	Protects from threats that attack your computer on a deeper level, even before Windows starts - on systems with the UEFI system interface
<b>WMI Scanner</b>	Looks for references to infected files or malware embedded as data in Windows Management Instrumentation, a set of tools that manages devices and applications in a Windows environment.
<b>System Registry Scanner</b>	Looks for references to infected files or malware embedded as data in the Windows System Registry, a hierarchical database that stores low-level settings for the Microsoft Windows operating system and for applications that opt to use the registry.
<b>Brute Force Attack Protection</b>	Blocks brute-force attacks, a method of discovering a targeted password by systematically trying all combinations of letters, numbers, and symbols.
<b>Small System Footprint</b>	Maintains high performance and extends the lifetime of hardware. Fits any type of system environment. Saves internet bandwidth with extremely small update packages.
<b>Gamer Mode</b>	ESET Internet Security automatically switches to silent mode if any program is run in full-screen. System updates and notifications are postponed to save resources for gaming, video, photos or presentations.
<b>Portable Computer Support</b>	Postpones all non-actionable pop-up windows, updates and system-hungry activities to preserve system resources so that you can focus on gaming or films.

## Protect your privacy

Enjoy safer connections and stay safe while online banking, making online payments and accessing web-based crypto-wallets. Protect your webcam and home Wi-Fi router from intruders, and protect your private data from ransomware. Ensure your privacy by actively testing your router-connected smart devices.

<b>Ransomware Shield</b>	Blocks malware that tries to lock you out of your personal data in order to demand a 'ransom' payment. Employs advanced behavior-based detection techniques to protect against malware that tries to damage devices by encrypting as many files as it can locate on local and network drives.
<b>Intel® Threat Detection Technology</b>	Boosts ransomware protection by integrating Intel's hardware-based ransomware detection technology. It exposes ransomware as it attempts to avoid detection in memory. This collaboration allows us to use Intel® TDT machine learning models to assist with the detection of ransomware while keeping overall system performance high due to off-loading these processing demands to the Intel integrated graphics controller (GPU).
<b>Webcam Protection</b>	Constantly monitors all the processes and applications running on your computer, to see which ones want to use your webcam. It alerts you to any that unexpectedly try to access your webcam, and lets you block them.
<b>Network Inspector</b> <small>IMPROVED</small>	Enables you to test your home router for vulnerabilities, such as weak passwords or out-of-date firmware. Provides you with an easy-to-access list of router-connected devices (smartphones, smart devices) with improved device detection to show you who's connected (device name, IP address, MAC address etc.). Enables you to scan smart devices for vulnerabilities and gives suggestions on how to fix possible issues. Offers the possibility to mark a network as My network (only for trusted networks).
<b>Firewall</b>	Prevents unauthorized access to your computer and misuse of your personal data.
<b>Network Attack Protection</b>	In addition to Firewall, automatically protects your computer from malicious network traffic, blocking threats revealed by dangerous traffic patterns.
<b>Banking &amp; Payment Protection</b> <small>IMPROVED</small>	Features a special secured browser mode through which you can safely pay online and run any supported browser in secured mode by default (after setup). Automatically protects you while internet banking and accessing web-based crypto-wallets. Encrypts communications between the keyboard and the browser for safer transactions and notifies you when using the feature on public Wi-Fi. Protects you from keyloggers. The "SecureAllBrowsers" mode is activated automatically for all compatible browsers.
<b>Botnet Protection</b>	An added layer of security that protects against botnet malware – preventing your computer from being misused for spam and network attacks. Benefit from a new type of detection thanks to Network Signatures, for even faster blocking of malicious traffic.
<b>Anti-Phishing</b>	Protects your privacy and assets against attempts by fraudulent websites to acquire sensitive information such as usernames, passwords or banking details, or feed you fake news from seemingly reputable sources. Protects you from homoglyph attacks (replacing characters in links with ones that look similar but are actually different).
<b>Out-of-Home Network</b>	Alerts you when connecting to an unknown network and prompts you to switch to the Strict Protection mode. Makes your device invisible to other computers connected to the same network.
<b>Device Control</b>	Allows you to prevent unauthorized copying of your private data to an external device. Allows you to block storage media – CDs, DVDs, USB sticks, and disk storage devices. Lets you block devices connecting via Bluetooth, FireWire and serial/parallel ports.
<b>Antispam</b>	Keeps unwanted emails from clogging your mailbox.

## Keep your kids safe on the internet

Show kids only the good side of the internet with Parental Control, preventing them from being exposed to offensive online content. Block more than 20 website categories, or add individual sites to the blacklist.

## Anti-Theft – Stay safer by tracking and locating your missing computer

Protect your laptop in case it gets lost or stolen, and increase the chances of its retrieval.

## Install and forget, or customize to meet your exact requirements

Delivering top protection right from the start with its default settings, ESET Internet Security keeps you informed about potential security issues and lets you address them directly from the main screen. Its sleek user interface is designed to let you easily set up all routine tasks.

<b>Parental Control</b>	Gives you the option to choose from predefined categories according to the age of your kids. Lets you set a password to protect settings against modification as well as prevent unauthorized product uninstallation.
<b>Location Tracking</b>	Lets you mark a device as missing via the ESET® Anti-Theft web interface at ESET HOME to initiate automatic monitoring. Displays position on a map based on the Wi-Fi networks in range when the device comes online. Allows you to access the gathered information via ESET Anti-Theft at <a href="http://home.eset.com">home.eset.com</a> .
<b>Laptop Activity Watch</b>	Allows you to watch thieves via your laptop's built-in camera. Collects snapshots of the missing laptop's screen. Saves all recent photos and snapshots to the web interface at <a href="http://home.eset.com">home.eset.com</a> .
<b>Anti-Theft Optimization</b>	Lets you easily set up/configure Anti-Theft for maximum protection of your device. Makes it easy to configure Windows auto-login and operating system account passwords. Helps you increase the level of security by prompting you to modify key system settings.
<b>One-Way Messaging</b>	At <a href="http://home.eset.com">home.eset.com</a> , create a message and have it displayed on your missing device – to increase the chances of its retrieval.
<b>One-Click Solution</b>	Lets you view your protection status and access the most frequently used tools from all screens. Offers comprehensive, one-click solutions to potential issues.
<b>Smooth Product Upgrades</b>	Benefit from new protection technologies as soon as they become available, for a continuously high level of security
<b>Settings for Advanced Users</b>	Offers in-depth security settings to fit your needs. Allows you to define maximum scanning depth, scanning time, size of the scanned files and archives, and much more.
<b>ESET SysInspector®</b>	An advanced diagnostic tool that captures critical information from the system to troubleshoot a broad range of security and compatibility issues.
<b>Security Report</b>	Gives you a monthly insight into how ESET protects your computer. This summary includes information about detected threats, blocked web pages, intercepted spam emails, blocked webcam accesses and more.

## Manage and maximize your security with ESET HOME

ESET HOME is a web portal and mobile app for Android and iOS that provides comprehensive oversight of ESET products, licenses and services on your devices. It's designed to be accessible whenever you need it, wherever you go. Get important security and license notifications, and check the overall security status of protected devices at any time. Install protection for new devices without typing your license key or login. Download, upgrade or renew your licenses. Add, manage and share licenses with family and friends. Manage Anti-Theft, Parental Control and Password Manager via the ESET HOME portal. All this and more is now available to you in one place, at any time.

<b>Devices</b>	Connect Windows and Android devices to your account via QR code, including Windows devices remotely, and check their security status at all times. Download and install protection for new devices and instantly secure them against threats.
<b>Licenses</b>	Add, manage and share licenses with family and friends. Upgrade and renew when necessary, and control at all times who else can use your license.
<b>Notifications</b>	Device, license and account notifications are part of both the portal and the mobile app. In addition to security and license information, available actions are detailed (only for Windows and Android OS).

# MULTIPLATFORM SOLUTION

## Secure all your devices

Whether you run a PC, Mac or Android smartphone, tablet or TV, protect them all with ESET's highest level of security.

## Protect your children online

With **ESET Parental Control for Android**, which comes as part of ESET Internet Security and covers multiple kids' devices, you can help your children manage their online experiences safely – and in a child-friendly way that they will understand.

## One convenient license

A single license covers all your devices, and protection can be transferred at any time to a new device without the hassle of getting a new license.

## Manage your security with ESET HOME

**ESET HOME** is a web portal and mobile app for Android and iOS that provides comprehensive oversight of ESET products, licenses and services on your devices. It's designed to be accessible whenever you need it, wherever you go.

## CHOOSE THE SECURITY YOU NEED. PROTECT 5 OR 3 DEVICES.



### Computers

Windows OS  
mac OS

#### Computers:

- WINDOWS:
- ESET Internet Security
  - ESET NOD32 Antivirus

#### MAC:

- ESET Cyber Security Pro
- ESET Cyber Security



### Smartphones, Tablets or TVs

Android OS

#### Smartphones and Tablets:

- ESET Mobile Security
- ESET Parental Control

#### Android TV:

- ESET Smart TV Security

## INTERNET SECURITY

- ✓ Antivirus
- ✓ Advanced Machine Learning
- ✓ Antispyware
- ✓ Anti-Phishing
- ✓ Banking & Payment Protection
- ✓ Anti-Theft
- ✓ Firewall
- ✓ Parental Control
- ✓ Device Control
- ✓ Antispam
- ✓ Exploit Blocker
- ✓ Botnet Protection
- ✓ Security Report
- ✓ Advanced Memory Scanner
- ✓ Network Attack Protection
- ✓ Script-Based Attack Protection
- ✓ UEFI Scanner
- ✓ Small System Footprint
- ✓ Gamer Mode
- ✓ Free Technical Support
- ✓ Network Inspector
- ✓ Webcam Protection
- ✓ Ransomware Shield
- ✓ Intel® Threat Detection Technology
- ✓ System Registry Scanner
- ✓ Brute Force Attack Protection
- ✓ WMI Scanner

## SMARTPHONE & TABLET\* SECURITY

- ✓ Antivirus
- ✓ Payment Protection
- ✓ Network Inspector
- ✓ Proactive Anti-Theft
- ✓ App Lock
- ✓ Anti-Phishing
- ✓ Call Filter
- ✓ Security Audit
- ✓ Scheduled Scanning
- ✓ Automatic Update of Detection Modules

\* Some features are not available for tablets which do not support calling and messaging.

## PARENTAL CONTROL

- ✓ Web Guard
- ✓ Application Guard with Time restrictions
- ✓ Time Budget
- ✓ Safe Search
- ✓ Child Locator
- ✓ Child Unblock Requests
- ✓ Multiple Children's Devices
- ✓ Usage Reports
- ✓ Instant Block

**100**  
**VB100**  
virusbulletin.com

ESET MAKES  
THE ONLY  
PRODUCT EVER  
TO **WIN 100**  
**VB100s**

[www.eset.com](http://www.eset.com)

Copyright © 1992–2022 ESET, spol. s r. o. ESET, ESET logo, ESET android figure, NOD32, ESET Smart Security, SysInspector, ThreatSense, ThreatSense.Net, LiveGrid, LiveGrid logo and/or other mentioned products of ESET, spol. s r. o., are registered trademarks of ESET, spol. s r. o. Windows® is a trademark of the Microsoft group of companies. Other here mentioned companies or products might be registered trademarks of their proprietors. Produced according to quality standards of ISO 9001:2000.