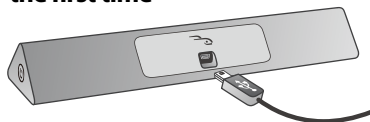


Bluetooth Speaker for iPad 2

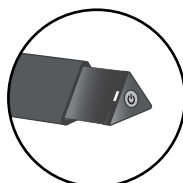
RF-TRSPIPAD

Thank you for purchasing this high quality Rocketfish product. Your Bluetooth speaker represents the state-of-the-art in iPad® accessories and is designed to integrate easily into your iPad's Smart Cover.

Charging your speakers fully for the first time



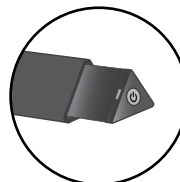
- 1 Plug the small end of the included USB cable into the speakers and the other end into an available USB port on your computer.
- 2 If the speaker is off (the LED is off) and you plug in the USB cable to charge the battery, the LED blinks red and green (indicating the speaker is in pairing mode). If no connection is established within three minutes, the speaker will turn off again and the LED will turn yellow (charging). The LED turns off when your speakers are fully charged.



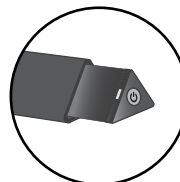
LED turns to yellow when charging

Note: Speakers will work with most Bluetooth audio devices.

- 3 When your speaker is connected, the indicator blinks red when charging and turns green when fully charged.



Charging in Progress indicator
(Red blinking LED)

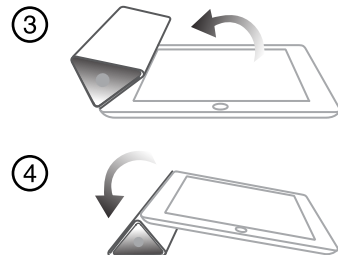
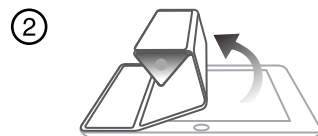
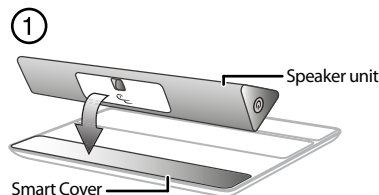


Full Charge indicator
(Constant green LED)

Note: You can charge your speakers and listen to audio at the same time.

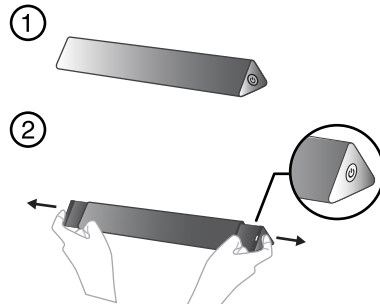
Installing the speaker unit into the Smart Cover

Place the highlighted areas of the speaker unit and the Smart Cover together in the orientation illustrated in Step 1, then proceed with the rest of the steps.



Turning on and pairing your devices

Turn on the speakers by pushing in on the side with the power on icon. This should turn on the unit and automatically put it in pairing mode. (Repeat the action on the opposite side to pop out the other speaker for better audio quality.)



Established connection
(Green LED)

To pair with your iPad:

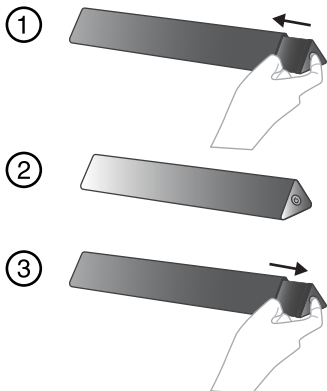
From the Home screen, choose *Settings > General > Bluetooth* and turn **Bluetooth** on. iPad searches for nearby Bluetooth accessories. Choose and Accept the Bluetooth accessory. This device is identified as **RF-TRSPIPAD**.

If needed, please refer to your iPad manual for additional pairing information. LED is **Constant Green** if connection is established with iPad 2. LED blinks red and green alternately when no connection is established. Speaker goes into sleep mode after three minutes, and LED turns off.

Note: Please make sure to disconnect (unpair) the RF-TRSPIPAD speakers from your iPad before attempting to pair your speakers with another Bluetooth device.

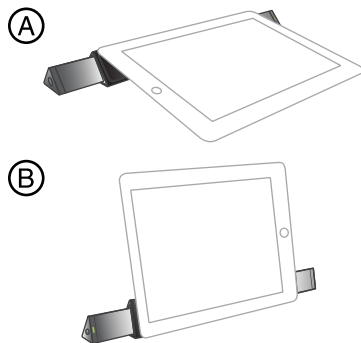
Reset

When pairing is not established after three minutes repeat the "turning on" sequence, by first pushing in the side of the speaker unit with the power on icon.

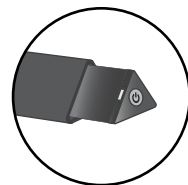


Enjoying your speakers

To enjoy your music or videos, place your iPad 2 with speakers in either orientation indicated.



LED indicators



Pairing status

LED blinking alternately red and green

Legal notice

FCC and IC information (English version)

This device complies with Part 15 of the FCC Rules and Industry license-exempt RSS standard(s). Operation is subject to the following two conditions: (1) this device may not cause interference, and (2) this device must accept any interference, including interference that may cause undesired operation of the device.

This equipment has been tested and found to comply with the limits for a Class B digital device, pursuant to Part 15 of the FCC Rules. These limits are designed to provide reasonable protection against harmful interference in a residential installation. This equipment generates, uses and can radiate radio frequency energy and, if not installed and used in accordance with the instructions, may cause harmful interference to radio communications. However, there is no guarantee that interference will not occur in a particular installation. If this equipment does cause harmful interference to radio or television reception, which can be determined by turning the equipment off and on, the user is encouraged to try to correct the interference by one or more of the following measure:

- Reorient or relocate the receiving antenna
- Increase the separation between the equipment and receiver.
- Connect the equipment into an outlet on a circuit different from that to which the receiver is connected.
- Consult the dealer or an experienced radio/TV technician for help.

This equipment complies with IC radiation exposure limits set forth for an uncontrolled environment. This equipment should be installed and operated with minimum distance 20 cm between the radiator and your body.

Warning: Changes or modifications not expressly approved by the party responsible for compliance could void the user's authority to operate the equipment.

One-year limited warranty

Visit www.rocketfishproducts.com for details.

Contact Rocketfish:

For customer service, call 1-800-620-2790
www.rocketfishproducts.com

© 2012 BBY Solutions, Inc. All Rights Reserved.
Distributed by Best Buy Purchasing, LLC
7601 Penn Avenue South, Richfield, MN USA 55423-3645
ROCKETFISH is a trademark of BBY Solutions, Inc. All other products and brand names are trademarks of their respective owners.