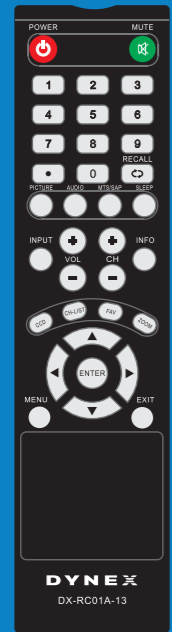
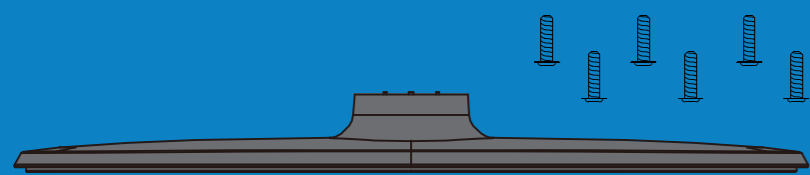


32" LCD TV 720p
QUICK SETUP GUIDE
 DX-32L100A13

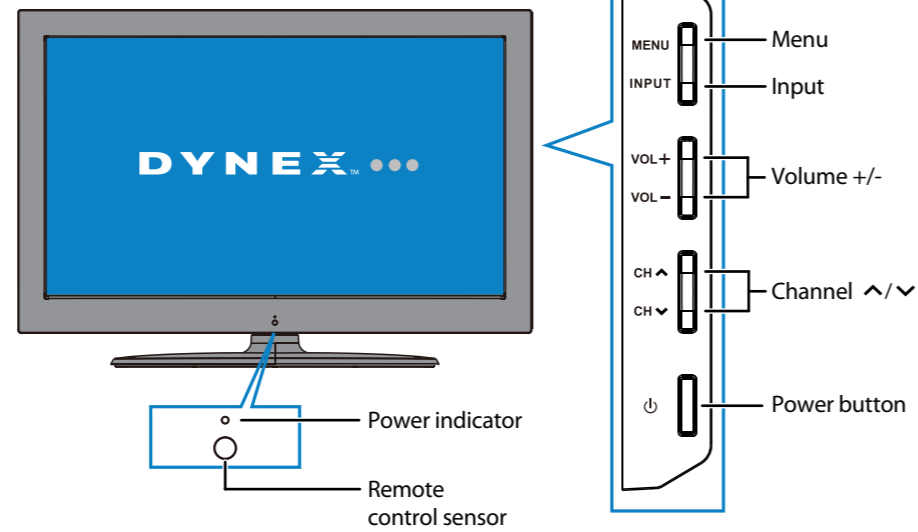


Remote control and two AAA batteries



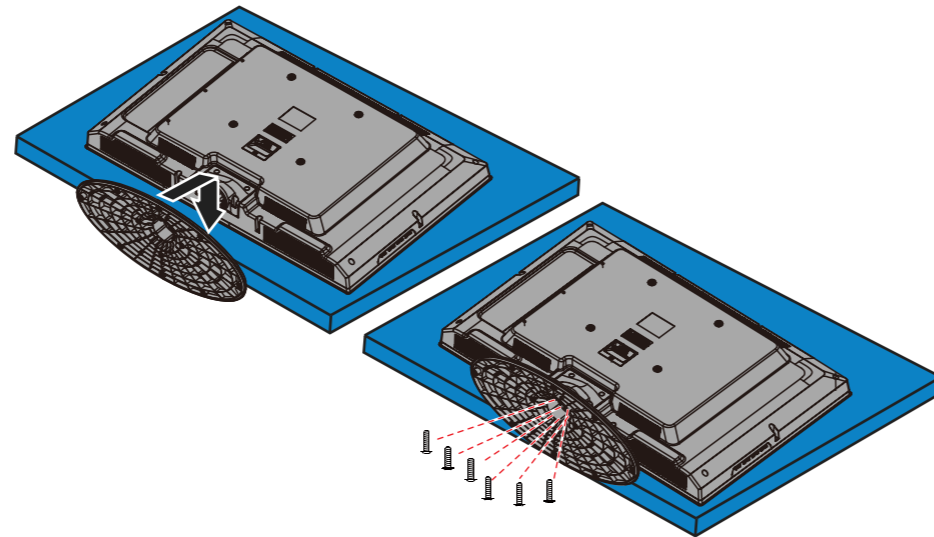
TV stand and six screws (M4, 16 mm)

Front features



Installing the stand

- Carefully place your TV screen face-down on a cushioned, clean surface to protect the screen from damage and scratches.
- Secure the stand to the screen with the six screws provided.



Installing a wall-mount bracket

- Carefully place your TV screen face-down on a cushioned, clean surface to protect the screen from damage and scratches.
- Remove the four screws that secure the stand column, then remove the column.
- Attach the wall-mount bracket to your TV using the mounting holes on the back of your TV. See the instructions that came with the wall-mount bracket for information about how to correctly hang your TV.

Warning

This apparatus is intended to be supported by a UL Listed wall mount bracket.

Identifying cables

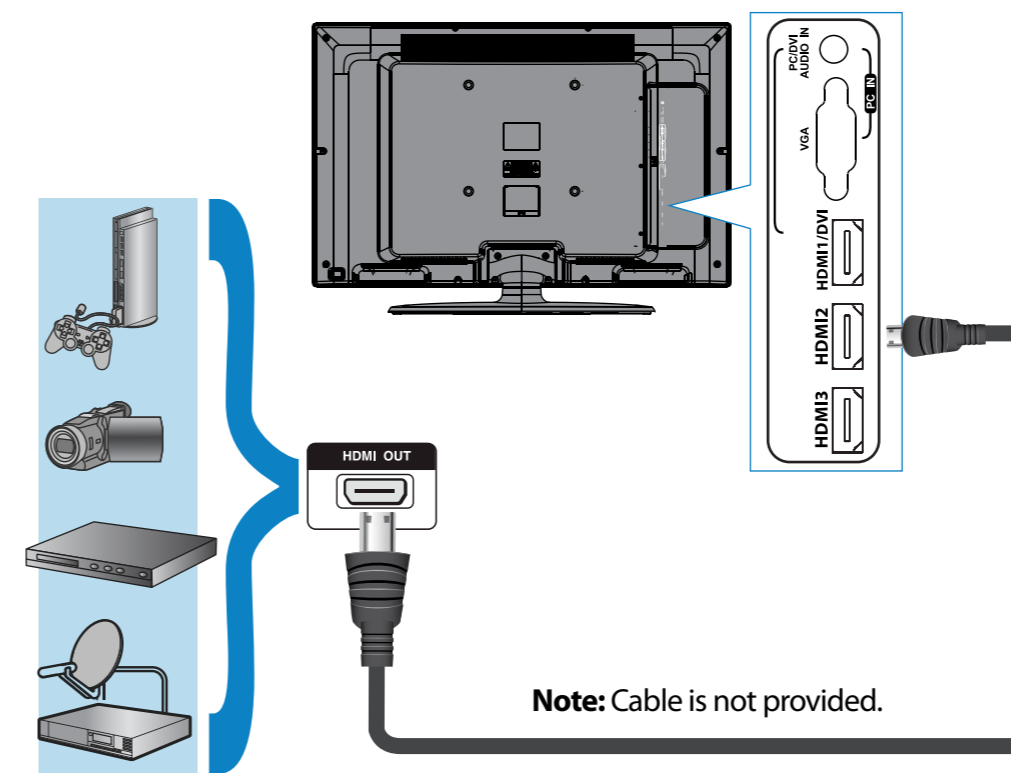
Your TV has several connection types for connecting devices. For the best video quality, connect a device to the best available connection.

| Connection type | Video quality | Cable connector |
|----------------------------------|---------------|-----------------|
| HDMI video/audio | Best | |
| OR | | |
| Component video and analog audio | Better | |
| OR | | |
| Composite video and analog audio | Good | |

You can use an HDMI jack to connect a DVI device to your TV. You need to attach an HDMI-to-DVI adapter to the end of the HDMI cable that connects to the DVI device's jack.

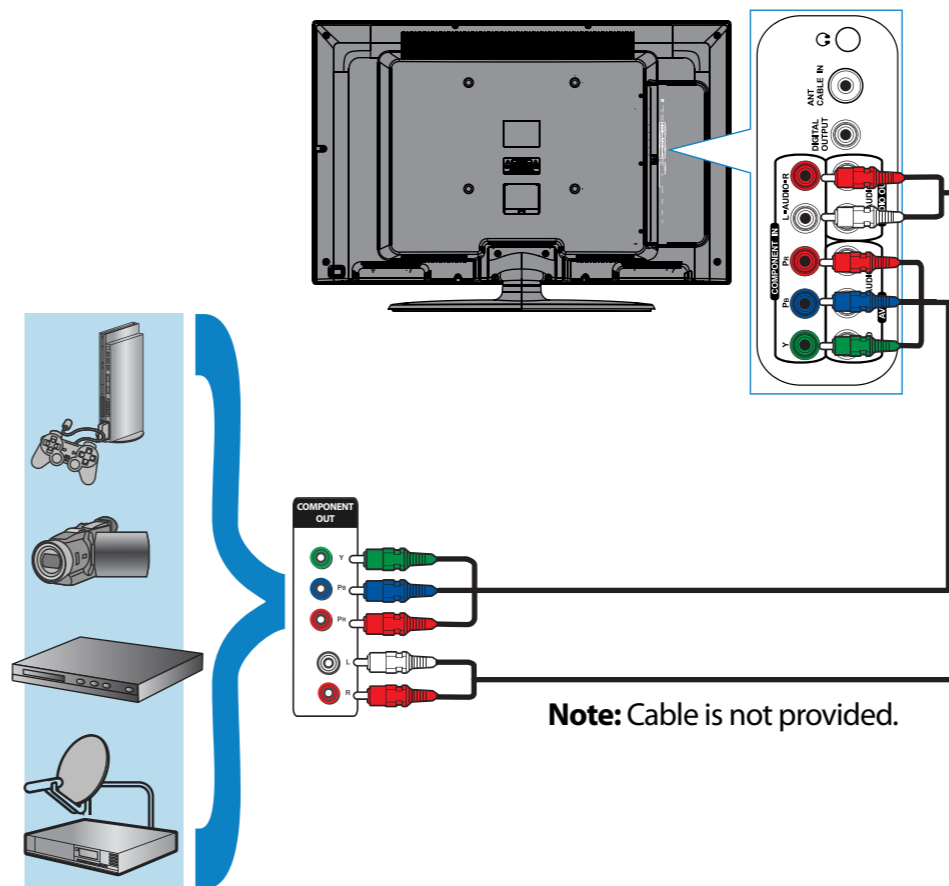
Connecting a DVD or Blu-ray player, cable box, satellite receiver, or game station

Using HDMI (best)



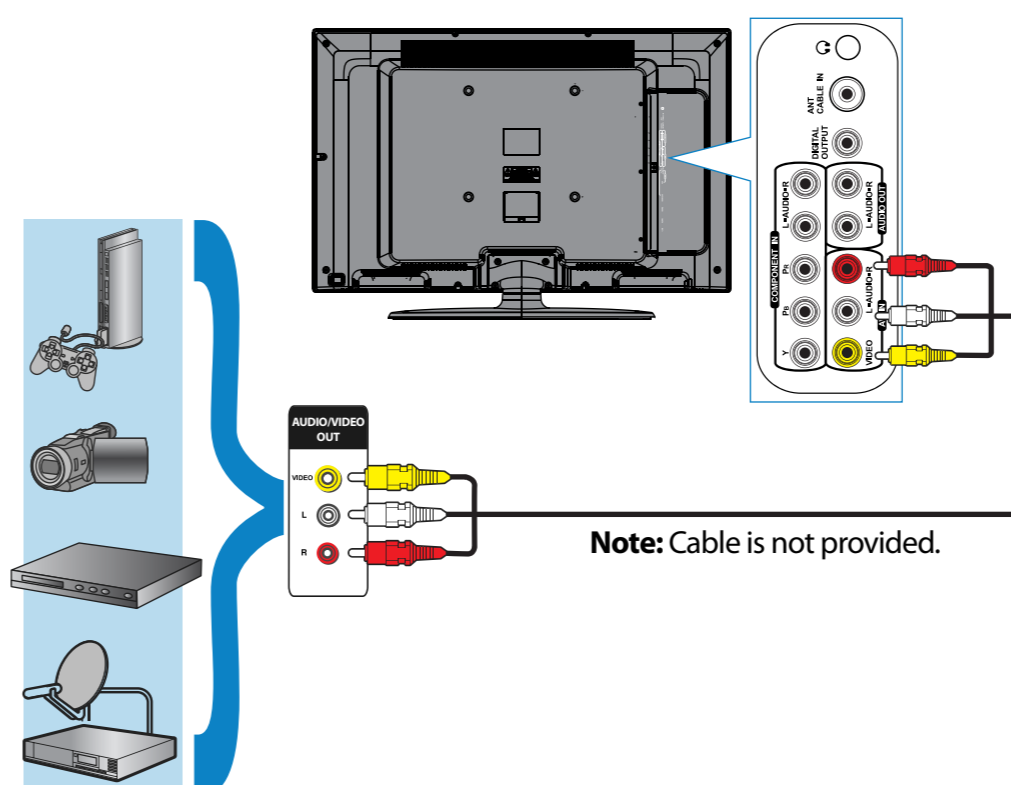
Note: Cable is not provided.

Using component cables (better)



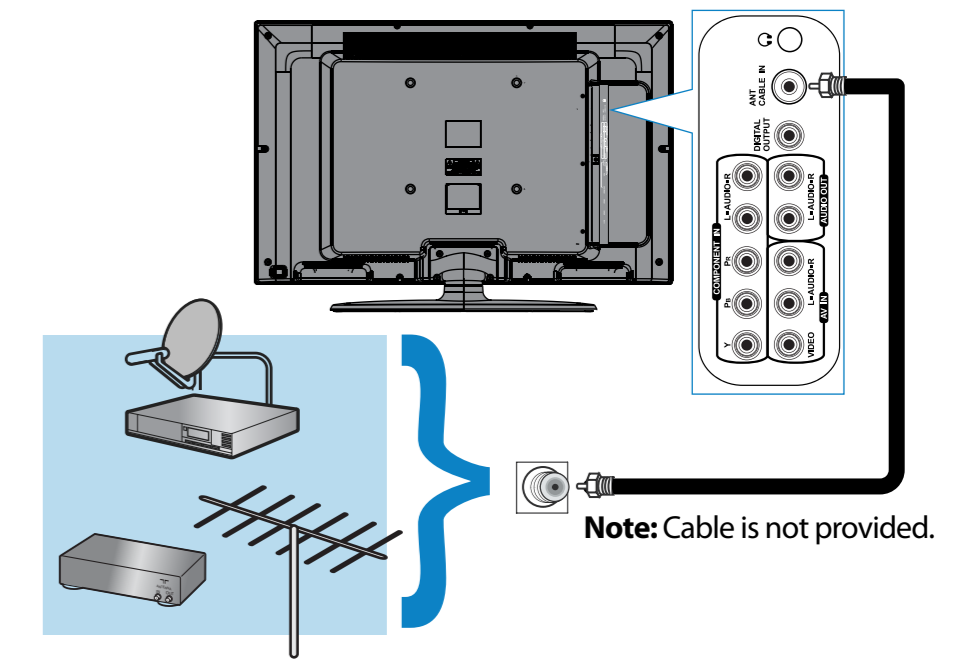
Note: Cable is not provided.

Using composite cables (good)



Note: Cable is not provided.

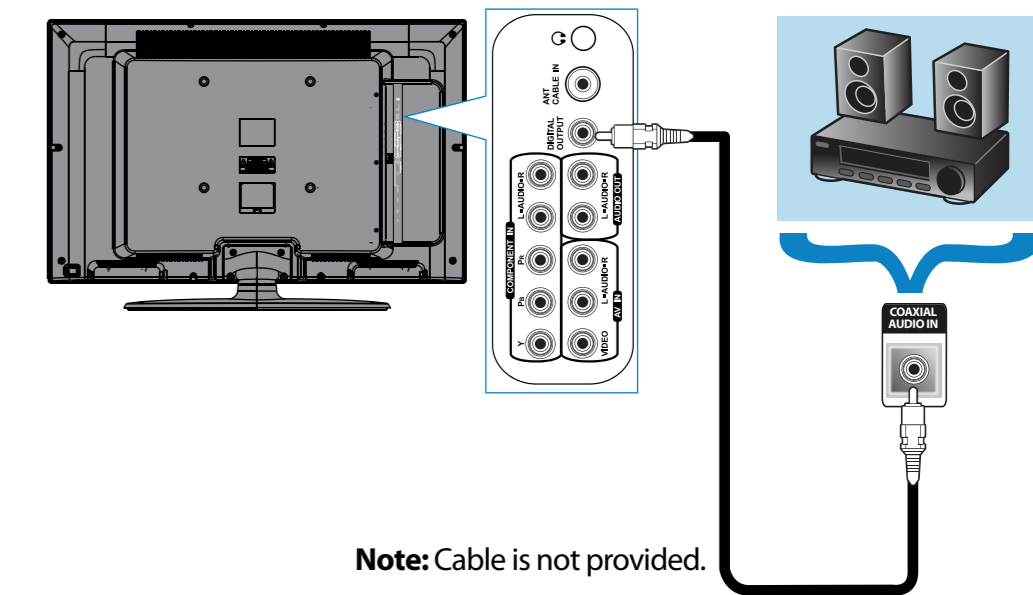
Connecting an antenna/cable wall jack



Note: Cable is not provided.

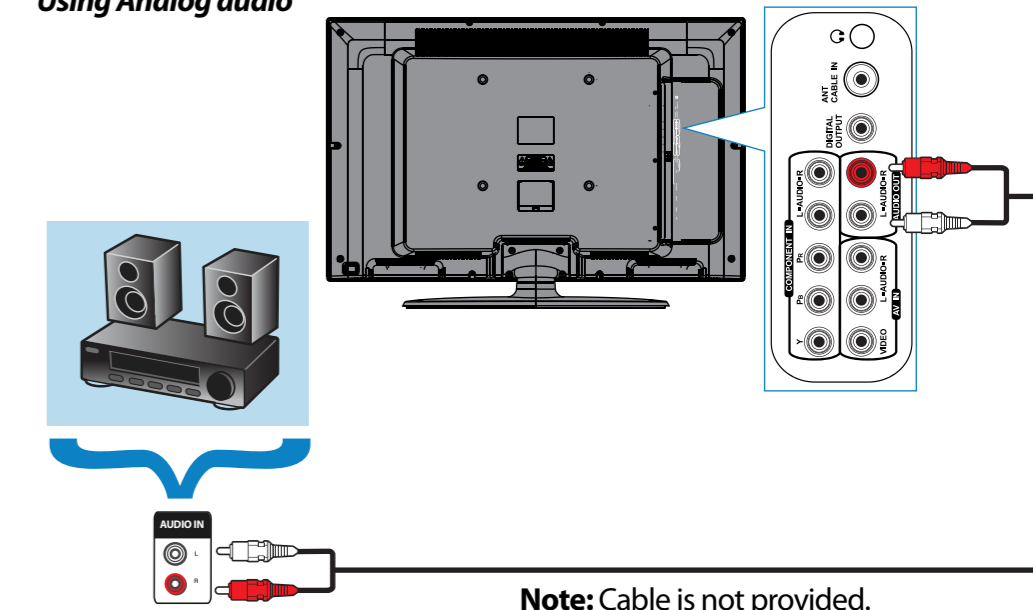
Connecting a Home Theater System

Using Digital audio



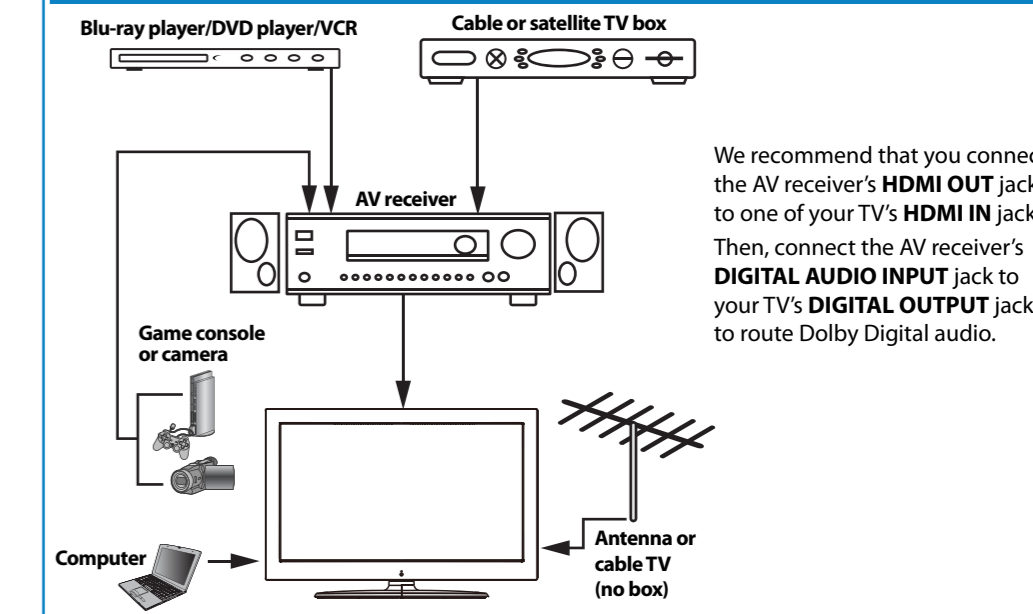
Note: Cable is not provided.

Using Analog audio



Note: Cable is not provided.

Connecting a home theater system with multiple devices



We recommend that you connect the AV receiver's **HDMI OUT** jack to one of your TV's **HDMI IN** jacks. Then, connect the AV receiver's **DIGITAL AUDIO INPUT** jack to your TV's **DIGITAL OUTPUT** jack to route Dolby Digital audio.

WE ARE GOING GREEN!

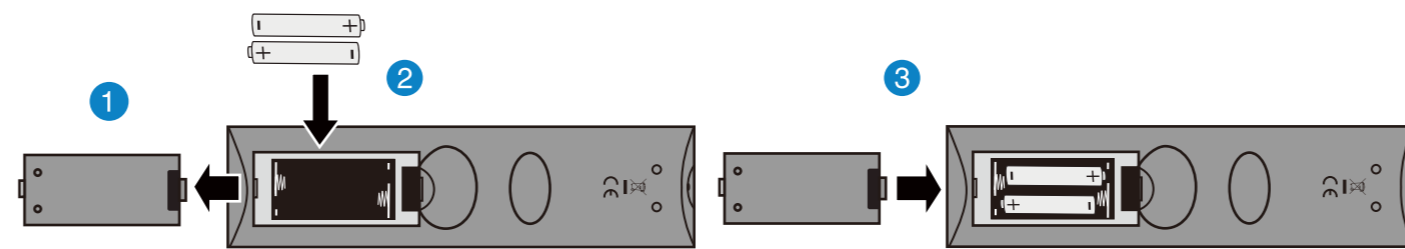
A copy of your User Guide is not provided in the box but is available online.

Go to www.dynexproducts.com, then click **Support & Service**. Enter your model number in the **Search** field, then press **Enter**. Click **Support/Downloads**.



Setting up and using your remote control

- 1 Press the release button on the back of the remote to remove the battery compartment cover.
- 2 Insert two AAA batteries into the battery compartment. Make sure that the + and - symbols on the batteries match the + and - symbols in the battery compartment.
- 3 Replace the cover.



Power
Turns your TV on or off.

MUTE
Mutes the sound.

Numbers
Enters channel numbers or parent control passwords.

RECALL
Returns to the previous channel.

SLEEP
Sets the sleep timer.

MTS/SAP
Cycles through mono, stereo, and secondary audio for analog programs.

INFO
Opens a TV status banner.

Channel
Changes the TV channels.

ZOOM
Changes how the picture displays on the screen.

FAV
Opens the Favorite Channel List.

EXIT
Closes the on-screen menu.

Arrows
Navigates in on-screen menus.

ENTER
Confirms selections or changes.

MENU
Opens the on-screen menu.

CH-LIST
Opens the channel list.

CCD
Turns closed captioning on or off.

Volume
Changes the volume.

INPUT
Opens the Input Source list.

AUDIO
Selects the audio mode.

PICTURE
Selects the picture mode.

Enters a digital sub-channel number. (Example: 4.1)

Aspect ratio options

- Normal:** Displays the original 4:3 aspect ratio with vertical black bars on the left and right hand side of the screen.
- Zoom:** Expands the image to fill the screen. The top and bottom of the image may be cropped.
- Wide:** Use this option to view content recorded in a 16:9 (wide-screen) aspect ratio.
- Cinema:** Stretches the image at the edges, but keeps a clear image in the center.
- Auto:** Automatically adjusts the image based on the screen size and the TV program. **Note:** Auto is only available when Auto Zoom in the Channels menu is set to On.

INPUT SOURCE

- TV
- AV
- Component
- HDMI1
- HDMI2
- HDMI3
- VGA
- USB

On-Screen Menu:

- Parental Controls
- Time
- Closed Caption
- Menu Settings
- Computer Settings
- Input Label
- System Info
- Power on in Vivid Mode
- Reset Default

POWER MUTE

1 2 3

4 5 6

7 8 9

0

RECALL

PICTURE AUDIO MTS/SAP SLEEP

INPUT VOL CH INFO

CCD CH-LIST FAV ZOOM

MENU ENTER EXIT

DYNEX
DX-RC01A-13

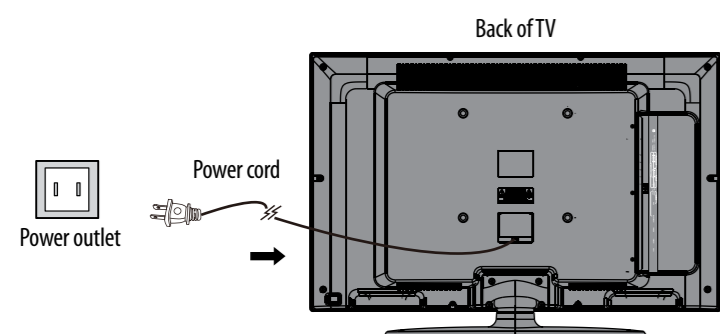
Programming your remote control

To program your universal remote control to work with your new Dynex TV, see the table for common codes. If you have problems programming your remote or need a different remote control code, visit <http://www.dynexproducts.com/remotecodes> for the latest remote control code information.

| Universal remote TV codes | | | | | | | | | | | | |
|---------------------------|------------|-----|---|---|---|---|------------|--|--------------|---------------------------------------|------|------------|
| Universal remote controls | | | | Cable/Satellite/Set-top box | | | | | | | | |
| One for All | Philips | RCA | Sony | Cablevision | Charter | Comcast | Cox | DirectTV | Dish Network | Time Warner | TiVo | Verizon |
| 0054 | 0198, 0490 | 135 | 068, 069, 078, 096, 100, 164, 168, 229, 026 | 068, 069, 078, 096, 100, 164, 168, 229, 026 | 2002, 1204, 1423, 1517, 0171, 1963, 0463, 1463, 0842, 1326, 167, 415, 424, 450, 456, 461, 507, 523, 567, 577, 586 | 10171, 11204, 11326, 11463, 11517, 11641, 11780, 11785, 11892, 11963, 12002 | 1326, 1463 | 10171, 11204, 11326, 11517, 11564, 11641, 11963, 12002 | 720 | 400, 450, 461, 456, 10463, 1463, 0463 | 0091 | 0198, 0490 |

Connecting power

Plug the AC power cord into an AC power outlet.



Turning on your TV for the first time

- 1 Connect the power cord to a power outlet, then press **POWER**. The power indicator turns on and the *Choose Your Menu Language* screen opens.
- 2 Press **▲** or **▼** to highlight a language, then press **OK/ENTER**. The *Time* screen opens with Mode highlighted.
- 3 Press **◀** or **▶** to select **Auto** or **Custom**. If you select **Auto**, the date and time are set automatically from a digital TV signal. If you select **Custom**, you can manually set the date and time. Press **OK/ENTER**. The *Choose your Picture Mode* screen opens.
- 4 Press **▲** or **▼** to highlight **Home Mode** or **Retail Mode**, then press **OK/ENTER**. If you select **Retail Mode**, a message asks you to confirm your selection. Select **Yes** or **No**. **Retail Mode** is not an energy-saving mode. The *Choose Your TV Source* screen opens.
- 5 Press **▲** or **▼** to highlight **Antenna**, **Cable**, or **Cable/Satellite Box**. If you select **Antenna** or **Cable**, your TV scans for available channels. The scan may take several minutes. **If you select Cable/Satellite Box, your TV does not scan for channels.**
- 6 To watch TV, press **TV** on the remote control.

