

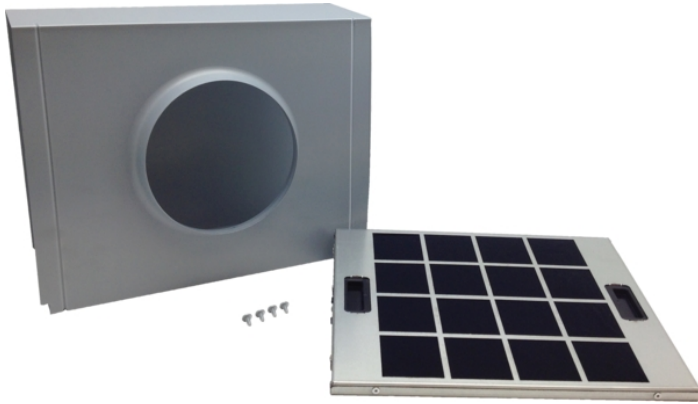
HCREC5UC

Wall Chimney Recirc. Kit

300 / 500 Series - Stainless Steel



Features and Benefits



Notes: All height, width and depth dimensions are shown in inches. *Please refer to installation instructions prior to making cutout. BSH reserves the absolute and unrestricted right to change product materials and specifications, at any time, without notice. Consult the product's installation instructions for final dimensional data and other details. Applicable product warranty can be found in a accompanying product literature or you may contact your account manager for further details.

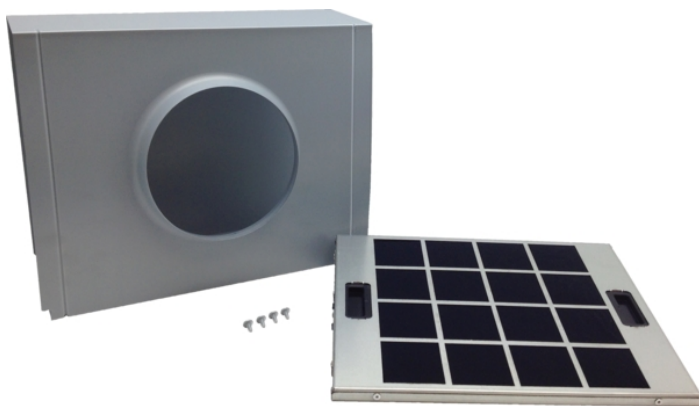
For more information on our entire line of products, go to [boschappliances.com](https://www.boschappliances.com) or call 1-800-944-2904.
Copyright ©2022 BSH Home Appliances Corporation. All rights reserved. Bosch is a registered trademark of Robert Bosch GmbH.

Litho Date: 10/2022

HCREC5UC

Wall Chimney Recirc. Kit

300 / 500 Series - Stainless Steel



Features

Product Description	
	Accessory
Brand	Bosch
Product name / series name	
SKU	HCREC5UC
Internal article number	000000000011020666
EAN code	4242002797885
Product packaging dimensions (HxWxD)	
Net weight	4.000
	5
Quantity per packing unit	
Standard number of units per pallet	
UPC code	825225909774
Product image	MCSA00741108_HCREC5UC_def.jpg

Technical Specification

Notes: All height, width and depth dimensions are shown in inches. *Please refer to installation instructions prior to making cutout. BSH reserves the absolute and unrestricted right to change product materials and specifications, at any time, without notice. Consult the product's installation instructions for final dimensional data and other details. Applicable product warranty can be found in a accompanying product literature or you may contact your account manager for further details.

For more information on our entire line of products, go to boschappliances.com or call 1-800-944-2904.
Copyright ©2022 BSH Home Appliances Corporation. All rights reserved. Bosch is a registered trademark of Robert Bosch GmbH.

Litho Date: 10/2022