

INSIGNIA™

# USER GUIDE

## 1080p Dash Camera

**NS-DASH152**



# Contents

IMPORTANT SAFEGUARDS .....	2
Features.....	3
Package contents .....	4
Components .....	5
Installing your dash camera.....	7
Using your dash camera .....	10
Formatting a MicroSD memory card .....	10
Manually turning your dash camera off and on ....	13
Understanding loop recording.....	13
Understanding Park mode.....	14
Recording an emergency video.....	14
Taking photos.....	15
Recording video.....	16
Downloading files to a computer .....	16
Navigating in the on-screen display.....	17
Menu options and settings .....	18
On-screen displays .....	23
Troubleshooting.....	37
Specifications .....	39
ONE-YEAR LIMITED WARRANTY .....	41

# IMPORTANT SAFEGUARDS

- Always read the safety instructions and *User Guide* carefully.
- Do not drop or allow forceful impacts to your dash camera, or install it in locations exposed to heavy vibrations.

- Do not disassemble or modify your dash camera in any way. Disassembly or modification may not only void the warranty, but may also cause damage.
- Do not use or store your dash camera in damp locations. Liquid entering your dash camera may cause damage or lead to fires or electric shock.
- Do not operate in extreme heat conditions. If your vehicle is parked in a hot sunny climate, let your vehicle cool down before using your dash camera.

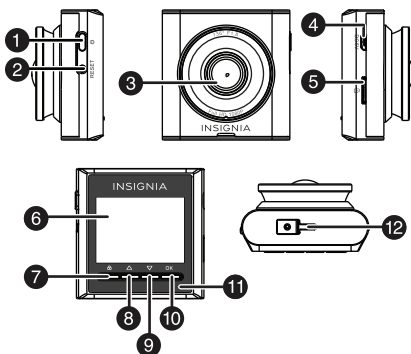
## Features

- 1080p video quality with playback option captures a crystal-clear image
- Wide Dynamic Range provides a vivid picture in both bright and dim environments, including at night
- Wide-angle lens captures everything within a 136° window
- G-sensor detects if a collision has occurred and auto-saves the current recording in a 1-, 2-, or 3-minute segment
- Loop recording feature overwrites old video to conserve memory card space (memory card not included)
- Temperature-resistant build functions at temperatures from -4° to 140° F (-20° to 60° C)
- Suction or adhesive mount attaches securely to your car's windshield
- Power adapter plugs into your vehicle's 12 V accessory port

## **Package contents**

- 1080p Dash Camera
- 12 ft. (3.6 m) USB power cable
- Vehicle power adapter
- Mounting bracket with suction cup
- Adhesive attachment
- *Quick Setup Guide*
- *User Guide*

## Components



#	ITEM	DESCRIPTION
1	⏻ (power button)	Press to manually turn your camera off and on.
2	Reset button	Press to reset your dash camera to factory defaults. Resetting doesn't erase your files.
3	Lens	1080p Full HD lens captures crystal-clear images.

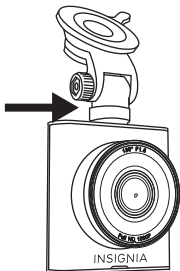
#	ITEM	DESCRIPTION
4	Micro USB port	Plug the included USB cable into this port and into the accessory port on your vehicle to provide power to your dash camera.
5	MicroSD card slot	Insert a MicroSD memory card (8 GB to 256 GB) (not included) into this slot to save videos and photos.
6	Screen	2.0-inch screen.
7	Emergency recording button	<ul style="list-style-type: none"><li>• Press to start an emergency recording.</li><li>• In the menus, press to return to the previous level.</li></ul>
8	Up button	<ul style="list-style-type: none"><li>• Press to take a photo.</li><li>• In the <i>Settings</i> menu, press to move up in a list of options.</li><li>• In the Playback mode, press to delete a file.</li></ul>
9	Down button	<ul style="list-style-type: none"><li>• Press to start or stop recording sound.</li><li>• In the menus, press to move down in a list of options.</li></ul>

#	ITEM	DESCRIPTION
10	OK button	<ul style="list-style-type: none"><li>• Press to open the <i>Settings</i> menu.</li><li>• In playback mode, press to play or pause a video.</li><li>• In the <i>Settings</i> menu, press to confirm selections.</li><li>• On the emergency video screen, press to stop an emergency video recording and enter the <i>Settings</i> menu.</li></ul>
11	LED status indicator	Blinks when your dash camera is recording. Lights solid when your dash camera is idle.
12	Stent slot	Insert and slide the mounting bracket on the suction cup into this slot on the top of your dash camera.

## Installing your dash camera

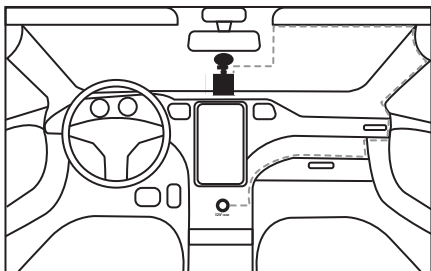
- 1 Insert a MicroSD memory card (8 GB to 256 GB memory capacity) (not included) in the MicroSD card slot with the label side of the card facing the windshield.
- 2 Clean and thoroughly dry the windshield area where you want to mount your dash camera.

- 3** Insert and slide the mounting bracket on the suction cup into the stent slot on the top of your dash camera.



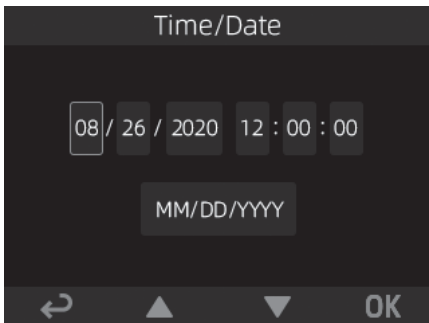
- 4** Peel the protective film from the mounting bracket and the dash camera lens and LCD screen.
- 5** Position the suction cup on the center of the windshield, below the rearview mirror, then move the mounting bracket switch clockwise until you hear a click.

- 6 Connect the provided USB cable to the Micro USB port on your dash camera, then thread the cable from your dash camera, around the outer edge of the windshield, and to a 12 V vehicle accessory port.



- 7 Plug the cable into a vehicle power adapter, then plug the adapter into the vehicle accessory port and turn on your vehicle. Your dash camera starts automatically.
- 8 Rotate the mounting bracket to adjust the viewing angle as needed.
- 9 Follow the on-screen prompts to set up your dash camera. Make sure that you format the memory card during setup. If the card is not formatted, it may not record or play back. See Formatting a MicroSD memory card on page 10.

When you turn on your dash camera for the first time (or after you re-format a memory card), you are prompted to enter basic setup information, such as Language, Year, Month, and Day. See [Menu options and settings](#) on page 18. Your dash camera uses this information when creating file names and when displaying time stamps. Subsequent startups go directly to the video screen.



## Using your dash camera

### Formatting a MicroSD memory card

#### *About the MicroSD card*

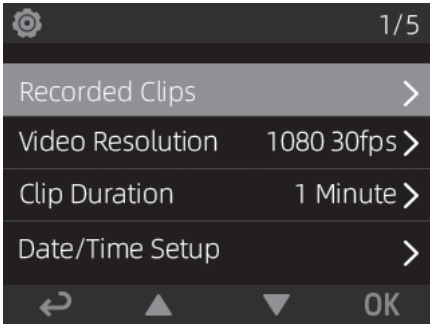
**Note:** Use a Class 10 or higher MicroSD memory card with 8 GB to 256 GB of memory. We recommend using a card with the highest memory capacity available. Higher memory capacity lets you record more.

- Before starting to record, you have to insert a Class 10 or above MicroSD card with up to 256 GB capacity into the slot located on the side of the camera. If the card is not formatted, a message asks you if you want to format the card.
- Make sure that the memory card has been formatted before you use it.
- Do not remove the memory card during recording. Your dash camera automatically powers off after you remove the memory card.
- When the MicroSD card is full, the oldest footage will be deleted to make way for the new. If you witness something that you don't want to be deleted, press the emergency record button to protect the file from being written over.

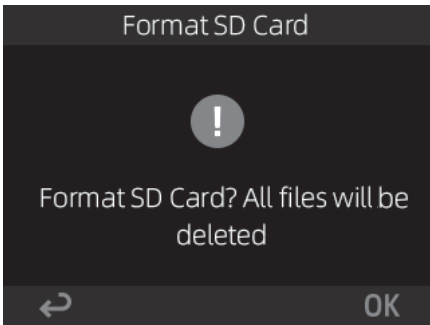
**CAUTION:** When you format a MicroSD card, all files, including protected emergency recordings, on the card are erased. Save any files you want to keep to another device (like a computer) before you format the card.

- 1 Turn on your vehicle.
- 2 Insert a MicroSD card into the SD card slot.

- 3 Press the **OK** button to open the *Settings* menu.



- 4 Press the ▲ (up) or ▼ (down) button to select **Format SD Card**, then press the **OK** button. A message asks you if you want to format the card.




- 5 Press the **OK** button. Your dash camera formats the card.

### ***About MicroSD storage***

The memory area on MicroSD card is divided into two partitions, locked (40%) and unlocked (60%). Your dash cam uses the unlocked partition for loop recording and the locked partition for storing emergency recordings. For more information, see [Understanding loop recording](#) on page [13](#) and [Recording an emergency video](#) on page [14](#).

## **Manually turning your dash camera off and on**

Your dash camera turns on automatically when you turn on your vehicle. You can manually turn your dash camera off, then turn it back on.

- Press and hold the  (power button) to turn your dash camera off. Press again to turn it back on.

## **Understanding loop recording**

The MicroSD card is divided into two partitions, locked (40%) and unlocked (60%). When the MicroSD card gets full, your dash cam continuously overwrites the oldest recordings in the unlocked partition with recent recordings. To prevent overwriting a recording, press the Emergency Recording button. Your dash cam moves the selected recording to the locked partition on the MicroSD memory card.

## Understanding Park mode


Park mode can be used when using a car ignition/battery connection cable (not included). These cables can usually be purchased and installed at a professional auto installation shop. After a cable is installed correctly, turn on Park mode from the *Settings* menu. When you turn off your vehicle, your dash cam goes into a low power (sleep) mode to conserve your vehicle's battery. If you don't install a car ignition/battery connection cable, you cannot use Park mode.

In Park mode, your dash cam enters sleep mode, and only the G-sensor is in standby mode.

If the G-sensor is triggered, your dash cam wakes up and records one minute of emergency video, then returns to sleep mode. Within one minute, your dash cam checks the G-sensor. If the G-sensor is triggered again, your dash cam starts loop recording for five minutes, then it turns off and enters park mode again.

## Recording an emergency video


An emergency recording starts when the G-Sensor registers a significant impact (hard braking or a collision) or you press the Emergency Recording button. Emergency recordings create protected (locked) files that are not overwritten by continuous loop recording. In addition, to make sure that important footage isn't lost surrounding an incident, adjacent video clips are locked if the incident happens within 30 seconds of the beginning or end of a clip.

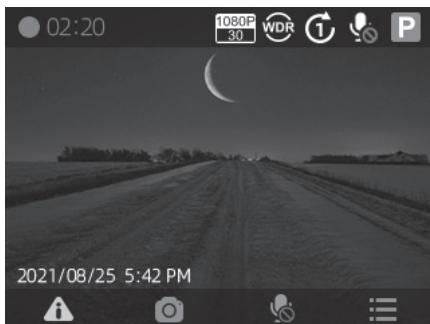
To capture an emergency recording, press the left  button once. Your dash cam saves the currently active recording, then resumes normal recording after the clip is saved.

- When your dash camera is turned on, press the **OK** button to start recording. Press this button again to stop recording.


**Note:** When the emergency recording partition is full, your dash cam displays Emergency video file is full! Save the files you want to keep to a computer. See [Downloading files to a computer](#) on page 16. If you don't clear the emergency clips, each time a new emergency clip is recorded, you see the message and your dash cam deletes the oldest emergency video.

## Taking photos

- On the Main screen press the  button to take a photo.



## Recording video

- 1 Make sure that your power cable is connected and the SD card is inserted.
- 2 After the vehicle is turned on, your dash cam automatically turns on and starts recording.
- 3 Press the  **Menu** button to open the *Settings* menu.

The *Settings* menu times out after 30 seconds and your dash cam returns to recording mode if no buttons are pressed.

## Downloading files to a computer

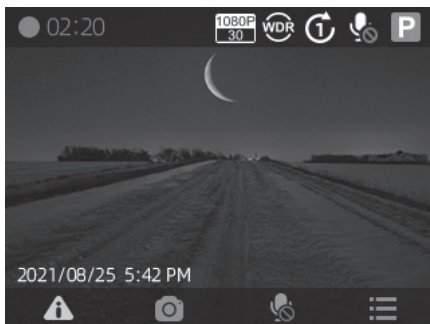
You can transfer files from your dash camera to a computer.

- 1 Remove the MicroSD memory card from your dash camera and insert it into a card reader on your computer. The memory card appears as a mobile hard disk device in your list of files.
- 2 Download the files to your computer into a directory you can easily find.
- 3 On your computer, right-click the device, then select **Eject** from the option list that appears.
- 4 Remove the card and put it back in your dash camera.

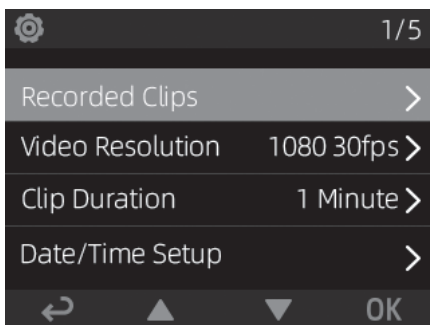
**Note:** You can't transfer files from your dash camera to a computer directly using a USB cable. To transfer files to the computer, the MicroSD card must be removed and inserted in the computer.



## Navigating in the on-screen display

- 1 Make sure that your dash camera is turned on and not in recording mode. The *Main* screen opens.




- 2 Press the **OK** button. The *Settings* menu opens.



- 3 Press the ▲ (up) or ▼ (down) button to select an option, then press the **OK** button.
- 4 If the option has multiple settings, press the ▲ (up) or ▼ (down) button to select a setting, then press the **OK** button to confirm your selection.  
OR  
If the settings for the option are **On** and **Off**,  appears after the option name. Press the **OK** button to turn the option on or off.
- 5 To return to the previous menu, press the  (return) button.

## Menu options and settings

OPTION	DEFAULT	SETTING
Recorded Clips		Selects the type of files to view. You can select <b>Clips</b> , <b>Photos</b> , or <b>Emergency Clips</b> .
Video Resolution	1080p 30 fps	Selects the camera resolution. You can select <b>1080p 30fps</b> or <b>720p 30fps</b> .

OPTION	DEFAULT	SETTING
Clip Duration	1 mins	<p>Sets the duration of recorded clips. You can select <b>1 mins</b>, <b>3 mins</b>, or <b>5 mins</b>.</p> <p>When the memory card is full, your dash camera deletes the oldest recordings to make room for new recordings. Your dash camera doesn't automatically delete emergency recordings. You must delete these recordings manually.</p>
Date/Time Setup		<b>YYYY/MM/DD</b>
Driver Fatigue Alert	2 hours	<p>Displays the  icon and beeps once to remind you to rest. You can select <b>1h</b>, <b>2h</b>, <b>4h</b>, or <b>Off</b>. If you do not stop for a break, the alarm is repeated every 30 minutes.</p>
Headlight Reminder	On	<p>If your dash camera detects a low light situation when you turn on your vehicle, it displays the  icon to remind you to turn on your headlights. You can select <b>On</b> or <b>Off</b>.</p>

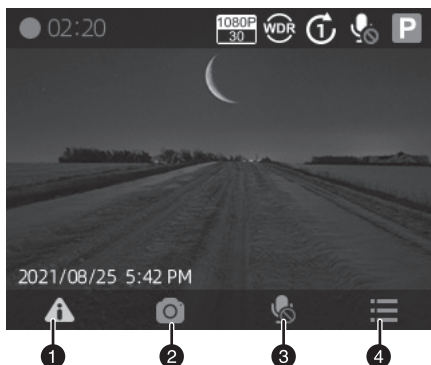
OPTION	DEFAULT	SETTING
Park Mode	Off	See <u>Understanding Park mode</u> on page 14.
G-Sensor Sensitivity	Medium	<p>When the G-Sensor detects an impact, it automatically starts an emergency recording to save the recorded images in a locked file. An emergency file can't be overwritten by the loop recording. The <b>G-sensor</b> option lets you adjust the G-sensor sensitivity. You can select <b>High</b>, <b>Medium</b>, <b>Low</b>, or <b>Off</b>.</p> <p>Selecting <b>High</b> captures a less powerful impact. Selecting the <b>Low</b> setting requires a more forceful impact to trigger a clip capture.</p>
Date/Time Stamp	On	<p>When a video is playing, displays the date and time information (the watermark) above the video.</p> <p>You can select <b>On</b> or <b>Off</b>.</p>

OPTION	DEFAULT	SETTING
Volume	Medium	Sets the beep and speaker playback volume. You can select <b>MUTE, Low, Medium, or High.</b>
ButtonBeep	On	When set to <b>On</b> , a beep sounds each time you press a button. You can select <b>On</b> or <b>Off</b> .
Display Auto Sleep Time	Always On	Set the amount of time before the display turns off. You can select <b>1minute, 3minutes, 5minutes, or Always On.</b>
Language	English	Sets the OSD language. You can select <b>English, Spanish, or French.</b>
WDR	On	(Wide Dynamic Range) Automatically adjusts the camera exposure. You can select <b>On</b> or <b>Off</b> .



OPTION	DEFAULT	SETTING
Format SD Card		Formats the MicroSD memory card. Press the <b>OK</b> button to start formatting. <b>CAUTION:</b> When you format a memory card, it erases all the data on the card. Make sure that you backup any recordings you want to save. See <u>Downloading files to a computer</u> on page 16.
Format Reminder	30days	Displays a message that reminds you that your MicroSD card may need to be reformatted. You can select <b>15days</b> , <b>30days</b> , <b>60days</b> , or <b>Off</b> .
Restore Defaults		Restores all the dash camera settings to the factory defaults. Press the <b>OK</b> button to reset. No files will be deleted.
About		Displays your dash camera's current software version. D152 INSIGNIA XXXXXXXX Vxxx

# On-screen displays

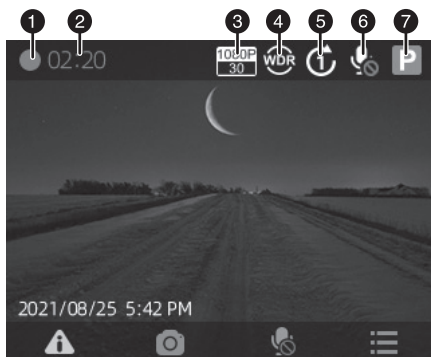
## Main screen









#	ICON	NAME	DESCRIPTION
1		Emergency recording	Press to start an emergency recording.
2		Photo	Press to take a picture.

#	ICON	NAME	DESCRIPTION
3		Sound record	Press to start or stop sound recording.
5		Settings	Press to open the Settings menu.

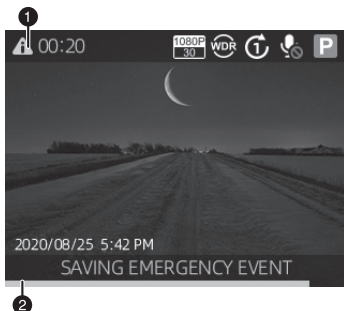
## Video recording screen






#	ICON	NAME	DESCRIPTION
1		Recording in progress	Lights when your dash camera is recording.
2	<b>02:20</b>	Recording time	Shows how long your dash camera has been recording.
3		Resolution	Shows the video resolution.

#	ICON	NAME	DESCRIPTION
4		WDR	Shows when WDR (wide dynamic range) is on.
5		Loop recording time	Shows the loop recording time ( <b>1 Minute, 3 Minute, or 5 Minute</b> ).
6		Sound	Shows whether sound recording is turned <b>On</b> or <b>Off</b> .
7		Park mode	Shows whether Parking mode is turned on or off. To use Park mode, you need to install the Car Ignition Hardware kit. See <u><a href="#">Understanding Park mode</a></u> on page <u><a href="#">14</a></u>

## Emergency video screen






#	ICON	NAME	DESCRIPTION
1		Emergency recording	When the G-sensor detects a collision, your dash camera starts an emergency recording. This icon flashes while recording. No other buttons are available while recording.

#	ICON	NAME	DESCRIPTION
1		(Continued) Emergency recording	You can press the Emergency recording button to manually start an emergency recording.
2		Emergency video progress bar	Shows the elapsed recording time.

## Video and photo selection screen








#	ICON	NAME	DESCRIPTION
1	<b>Clips</b>	File classification	Indicates the type of file (video or photo) that is currently selected.
2	<b>2020/08/26 12:15:26</b>	Date and time	Shows the date and time when the video or photo was created.

#	ICON	NAME	DESCRIPTION
3	1/4	Current page/ total pages	Shows the current page and the total number of pages of thumbnails.
4		Return	Press to return to the previous screen.
5		Previous	Press to go to the previous thumbnail.
6		Next	Press to go to the next thumbnail.
7	OK	OK	Press to play or open the highlighted video or photo thumbnail.

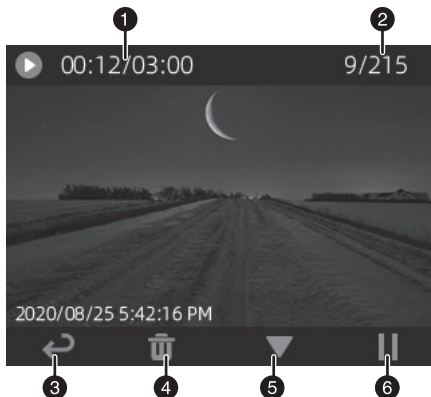
## Photo playback screen










#	ICON	NAME	DESCRIPTION
1	9/215	Number of photos	Shows the number for the currently displayed photo and the total number of photos.
2		Return	Press to go to the previous screen.
3		Previous	Press to go to the previous file.

#	ICON	NAME	DESCRIPTION
4		Next	Press to go to the next file.
5		Delete	Press to delete the currently selected file. A message asks you if you want to delete the file. Press the <b>OK</b> button or icon to confirm the deletion or press the  (return) button or icon to cancel the deletion and return to the previous screen.

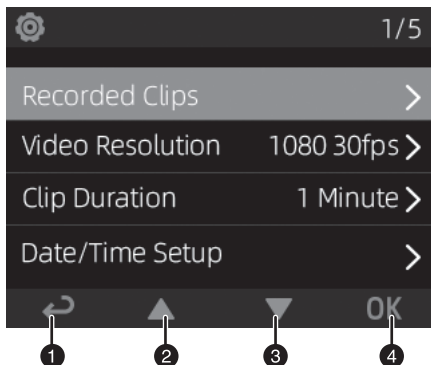
## Video playback screen










#	ICON	NAME	DESCRIPTION
1	<b>00:12/ 03:00</b>	Times	Shows how long a video has played and the total length of the video.
2	<b>9/215</b>	Number of files	Shows the number for the currently playing video and the total number of videos.

#	ICON	NAME	DESCRIPTION
3		Return	Press to go to the previous screen.
4		Delete	Press to delete the currently selected file. A message asks you if you want to delete the file. Press the <b>OK</b> button or icon to confirm the deletion or press the  (return) button or icon to cancel the deletion and return to the previous screen.
5		Next clip	Press to start video playback. Press the  (pause) button to pause playback.
6		Pause	Press to pause playback. Press the  (next clip) button to resume video playback.


## Settings menu




#	ICON	NAME	DESCRIPTION
1		Return	Press to return to the previous menu.
2		Up	Press to move up in a list of options or settings.

#	ICON	NAME	DESCRIPTION
3		Down	Press to move down in a list of options or settings.
4		OK	<p>Press to select an option.</p> <p>If the settings for the option are <b>On</b> and <b>Off</b>,  appears after the option name. Press the <b>OK</b> button or icon to turn the option <b>On</b> or <b>Off</b>.</p> <p>If a  (selected) appears behind a setting name, the setting is the currently selected setting. As you move up and down the list of settings, the  moves to the currently selected setting.</p>

# Troubleshooting

PROBLEM	SOLUTION
My dash camera won't turn on.	<ul style="list-style-type: none"><li>• Make sure that your vehicle is turned on. Some vehicles don't power the accessory port if the vehicle is turned off.</li><li>• Make sure that your vehicle's accessory port is clean and free of corrosion.</li><li>• Make sure that the USB cable is securely connected to your dash camera and the power adapter.</li><li>• Make sure that the power adapter is firmly seated in your vehicle's accessory port and that the status LED is on.</li><li>• Make sure that the memory card is formatted. If the card is not formatted, it can't record or save. See <a href="#">Formatting a MicroSD memory card</a> on page 10.</li></ul>
My dash camera seems to be stalled or "hung up."	<ul style="list-style-type: none"><li>• Press and hold the  (power) button to turn your dash camera off, then press and hold the button again to turn it back on.</li><li>• Unplug the USB cable, then plug it back in. Press and hold the reset button for three seconds, then release.</li></ul>

PROBLEM	SOLUTION
The time isn't correct.	<ul style="list-style-type: none"><li>Your dash camera can remember the time for seven days at room temperature. If you have used your dash camera for an extended time, you may need to reset the time. When your dash camera isn't recording, press the power button to open the <i>Settings</i> menu, then select the <b>Date and time setting</b> option.</li></ul>
My pictures and video are blurry.	<ul style="list-style-type: none"><li>Clean the lens with a lens cloth.</li></ul>
The video quality is poor.	<ul style="list-style-type: none"><li>Make sure that you set your dash camera to the 1080p resolution. A higher resolution makes the image clearer, sharper, more defined, and more detailed.</li></ul>
I don't want some of my videos overwritten.	<ul style="list-style-type: none"><li>In recording mode, press the  button to manually activate the emergency video mode.</li><li>Copy recordings to a computer.</li></ul>
The mounting bracket won't firmly mount to the windshield.	<ul style="list-style-type: none"><li>Make sure that the glass is not dirty or wet.</li><li>Make sure that you removed the protective film on the back of mounting bracket.</li></ul>

PROBLEM	SOLUTION
Videos don't have sound or I don't want videos to have sound.	<ul style="list-style-type: none"> <li>Press the  (microphone) button on the Main screen to turn the sound Off or On.</li> </ul>
I can't transfer videos or photos to a computer.	<ul style="list-style-type: none"> <li>We recommend that you remove the memory card and insert it into a card reader on your computer.</li> </ul>

## Specifications

Specifications are subject to change without notice.

Dimensions (H × W × D)	2.3 × 1.2 × 2.2 in. (5.9 × 3.1 × 5.7 cm) These measurements do not include the mounting bracket or suction cup.
Weight	2.5 oz. (70 g)
Temperature	Operating temperature: -4° ~ 140°F (-20° ~ 60°C) Storage temperature: -22° ~ 176° F (-30° ~ 80° C)
Resolution	1080p (1920 × 1080) 720p (1280 × 720)
Frame rate	30 fps
Image format	Photo: JPG Recording: MP4
Display	2.0-in. LCD

Lens angle	136°
Micro SD card capacity	8 GB ~ 256 GB (Class 10 or higher)
OSD languages	English, Spanish, and French

# ONE-YEAR LIMITED WARRANTY

## ***Definitions:***

The Distributor\* of Insignia branded products warrants to you, the original purchaser of this new Insignia-branded product ("Product"), that the Product shall be free of defects in the original manufacturer of the material or workmanship for a period of one (1) year from the date of your purchase of the Product ("Warranty Period").

For this warranty to apply, your Product must be purchased in the United States or Canada from a Best Buy branded retail store or online at [www.bestbuy.com](http://www.bestbuy.com) or [www.bestbuy.ca](http://www.bestbuy.ca) and is packaged with this warranty statement.

## ***How long does the coverage last?***

The Warranty Period lasts for 1 year (365 days) from the date you purchased the Product. Your purchase date is printed on the receipt you received with the Product.

## ***What does this warranty cover?***

During the Warranty Period, if the original manufacture of the material or workmanship of the Product is determined to be defective by an authorized Insignia repair center or store personnel, Insignia will (at its sole option): (1) repair the Product with new or rebuilt parts; or (2) replace the Product at no charge with new or rebuilt comparable products or parts. Products and parts replaced under this warranty become the property of Insignia and are not returned to you. If service of Products or parts are required after the Warranty Period expires, you must pay all labor and parts charges. This warranty lasts as long as you own your Insignia Product during the Warranty Period. Warranty coverage terminates if you sell or otherwise transfer the Product.

## ***How to obtain warranty service?***

If you purchased the Product at a Best Buy retail store location or from a Best Buy online website ([www.bestbuy.com](http://www.bestbuy.com) or [www.bestbuy.ca](http://www.bestbuy.ca)), please take your original receipt and the Product to any Best Buy store. Make sure that you place the Product in its original packaging or packaging that provides the same amount of protection as the original packaging.

To obtain warranty service, in the United States and Canada call 1-877-467-4289. Call agents may diagnose and correct the issue over the phone.

## ***Where is the warranty valid?***

This warranty is valid only in the United States and Canada at Best Buy branded retail stores or websites to the original purchaser of the product in the country where the original purchase was made.

## ***What does the warranty not cover?***

This warranty does not cover:

- Food, beverage, and or medicine loss/spoilage
- Customer instruction/education
- Installation
- Set up adjustments
- Cosmetic damage
- Damage due to weather, lightning, and other acts of God, such as power surges
- Accidental damage
- Misuse
- Abuse
- Negligence
- Commercial purposes/use, including but not limited to use in a place of business or in communal areas of a multiple dwelling condominium or apartment complex, or otherwise used in a place of other than a private home.
- Modification of any part of the Product, including the antenna
- Display panel damaged by static (non-moving) images applied for lengthy periods (burn-in).
- Damage due to incorrect operation or maintenance
- Connection to an incorrect voltage or power supply
- Attempted repair by any person not authorized by Insignia to service the Product
- Products sold "as is" or "with all faults"

- Consumables, including but not limited to batteries (i.e. AA, AAA, C etc.)
- Products where the factory applied serial number has been altered or removed
- Loss or Theft of this product or any part of the product
- Display panels containing up to three (3) pixel failures (dots that are dark or incorrectly illuminated) grouped in an area smaller than one tenth (1/10) of the display size or up to five (5) pixel failures throughout the display. (Pixel based displays may contain a limited number of pixels that may not function normally.)
- Failures or Damage caused by any contact including but not limited to liquids, gels or pastes.

REPAIR REPLACEMENT AS PROVIDED UNDER THIS WARRANTY IS YOUR EXCLUSIVE REMEDY FOR BREACH OF WARRANTY. INSIGNIA SHALL NOT BE LIABLE FOR ANY INCIDENTAL OR CONSEQUENTIAL DAMAGES FOR THE BREACH OF ANY EXPRESS OR IMPLIED WARRANTY ON THIS PRODUCT, INCLUDING, BUT NOT LIMITED TO, LOST DATA, LOSS OF USE OF YOUR PRODUCT, LOST BUSINESS OR LOST PROFITS. INSIGNIA PRODUCTS MAKES NO OTHER EXPRESS WARRANTIES WITH RESPECT TO THE PRODUCT, ALL EXPRESS AND IMPLIED WARRANTIES FOR THE PRODUCT, INCLUDING BUT NOT LIMITED TO ANY IMPLIED WARRANTIES OF AND CONDITIONS OF MERCHANTABILITY AND FITNESS FOR A PARTICULAR PURPOSE, ARE LIMITED IN DURATION TO THE WARRANTY PERIOD SET FORTH ABOVE AND NO WARRANTIES, WHETHER EXPRESS OR IMPLIED, WILL APPLY AFTER THE WARRANTY PERIOD. SOME STATES, PROVINCES AND JURISDICTIONS DO NOT ALLOW LIMITATIONS ON HOW LONG AN IMPLIED WARRANTY LASTS, SO THE ABOVE LIMITATION MAY NOT APPLY TO YOU. THIS WARRANTY GIVES YOU SPECIFIC LEGAL RIGHTS, AND YOU MAY ALSO HAVE OTHER RIGHTS, WHICH VARY FROM STATE TO STATE OR PROVINCE TO PROVINCE.

Contact Insignia:

**1-877-467-4289**

[www.insigniaproducts.com](http://www.insigniaproducts.com)

INSIGNIA is a trademark of Best Buy and its affiliated companies.

\*Distributed by Best Buy Purchasing, LLC

7601 Penn Ave South, Richfield, MN 55423 U.S.A

©2022 Best Buy. All rights reserved.

**[www.insigniaproducts.com](http://www.insigniaproducts.com)**

1-877-467-4289 (U.S. and Canada)

INSIGNIA is a trademark of Best Buy and its affiliated companies.

Distributed by Best Buy Purchasing, LLC

7601 Penn Ave South, Richfield, MN 55423 U.S.A.

©2022 Best Buy. All rights reserved.

**V2 ENGLISH**  
**22-0166**