

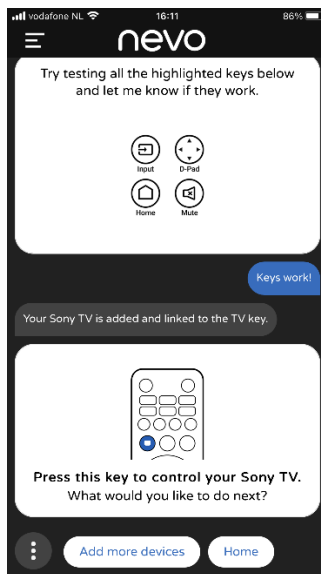
How to set up TV with Google to use voice on the Smart Control Pro

If you have a TV running the Google TV Operating System, for example a Sony or TCL TV, most of the functionality works by infrared (IR). But in order to use voice search, it is necessary to pair the remote with the TV using Bluetooth Low Energy (BLE). To do this:

Step 1 – Set up your TV

Firstly install the My Nevo app and follow the instructions to communicate with the Smart Control Pro remote. The app will check to see if your remote has the latest firmware and if it doesn't it will automatically update the remote.

Once this has been done you will be prompted to set up your TV. Select the brand of your TV and the app will ask you to test some keys to see if it works. You can test all the keys on your remote, including for example the Netflix key to make sure you have exactly the right code. If there is a key you have on your original remote that is not working on the Smart Control Pro, select Try Next. Once the keys work, select Keys Work. Your TV is now set up.

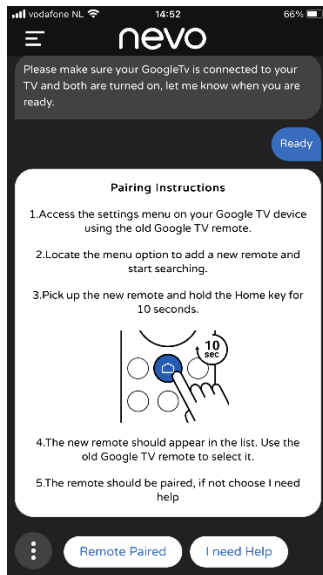


Step 2 – Pair the remote with the TV via Bluetooth

Once your TV had been set up, the next step is to pair the remote with the TV via Bluetooth. To do this, select the option to add another device, and select Streaming Device. Next select Google TV.

The next step is to prepare your TV to be paired with the Smart Control. Please use your TV's ORIGINAL remote control to do the following:

- Select the Setting icon on your TV (generally speaking a cog on the top right) and scroll to the setting for adding remotes and/or accessory.
- Select the option for adding an accessory - the TV should start searching for a new accessory.
- Following the instructions on the app, hold down the Home key on the Smart Control Pro for 10 seconds, until the blue Stream LED starts blinking.



- The remote should appear in the list of accessories to pair. It should appear as "AR". If it does not appear in a few seconds, press back on the original remote and search again.
- Once the AR remote appears, press OK / Select on the original remote control. The TV should then pair with the remote.

Using the Voice search

Once the procedure has been completed, you can use Voice Search on your TV by selecting the Stream Device mode, or the Watch Movie Activity mode. Then when you want to use Voice, hold down the Menu/Mic button and speak into the hole in the top center of the remote.