

⚠ WARNING

- Not for children under 6 years. Keep out of reach of very young children.
- USE UNDER ADULT SUPERVISION. Adult supervision is required when children are playing with water.
- AVOID DIRECT CONTACT WITH EYES. In case of direct contact with eyes, rinse immediately with plenty of water and seek medical advice.
- **ONLY** use the rainbow highlighter on yourself. Do not apply the other contents to your skin, as they are not for cosmetic use.
- Cosmetics are for external use only.
- Do not use cosmetics on broken skin.
- As with all cosmetics, some individual skin types may experience minor skin irritation. If this occurs, discontinue use.
- Do not apply product to furniture, pets, etc.
- Do not eat the cosmetics or the contents included in this package.
- Do not inhale the contents included in this kit.
- Wash hands before and after using cosmetics.
- Once opening the highlighter makeup packet, apply to the face. Discontinue use if it has been left opened for a long period of time or if it has gotten dirty.

IMPORTANT INFORMATION

- Keep slime away from paper surfaces, as it will stick permanently.
- Color transfer from pigments may occur. Wash hands thoroughly after use and keep slime away from clothing and surfaces other than the bottle, doll's garment, shoes and purse.
- Keep contents away from eyes, mouth and face.
- Do not dispose of slime in the drain. Dispose in a trash receptacle once you are finished playing with it.
- Clean the bottle with water. Rinse thoroughly and air dry in a well-ventilated area.
- Water temperature may affect the slime's consistency.
- Tightly close the purse, shoes and garments when storing the slime to prevent spillage.
- Slime will dry out over time. Store in a sealed container to prevent drying out when not in use.
- Store contents inside of the storage case after use.
- Rainbow highlighter can also be added to the slime.
- Do not wash doll's hair with water and/or soap. Do not dry with a hair dryer or subject hair to very high heat in any manner, as it will irreparably damage the hair.
- To clean garments, rinse with water and use a paper towel to dry the inside. Allow it to completely air dry before storing.



0319-0-E
Printed in China

Please keep this manual as it contains important information.

WWW.POOPSIESLIMESURPRISE.COM
©2019 MGA Entertainment, Inc.
POOPSIE™ and RAINBOW SURPRISE™ are trademarks of MGA in the U.S. and other countries. All logos, names, characters, likenesses, images, slogans, and packaging appearance are the property of MGA.

16300 Roscoe Blvd.
Van Nuys, CA 91406 U.S.A.
(800) 222-4685

The preferred method of contact for Customer Service is through our e-mail contact form at www.mgae.com



Age 6+

⚠ WARNING:
CHOKING HAZARD-Small parts.
Not for children under 3 years.

SKUs: 561095 / 561118

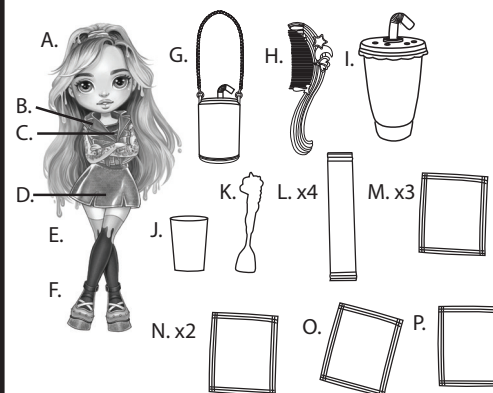
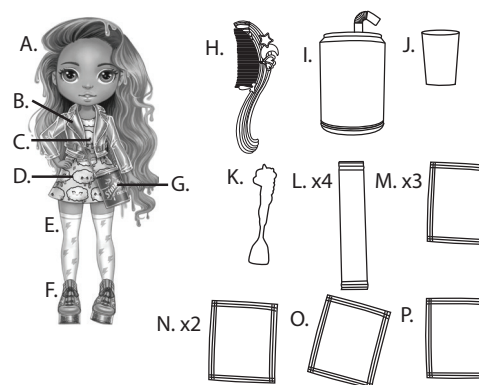
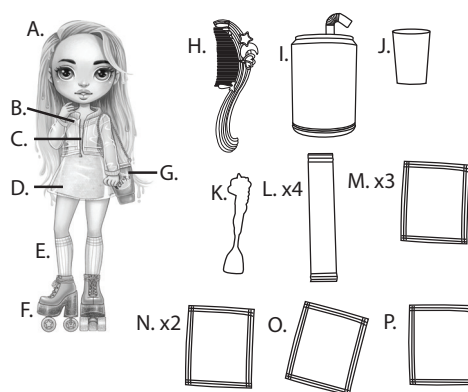
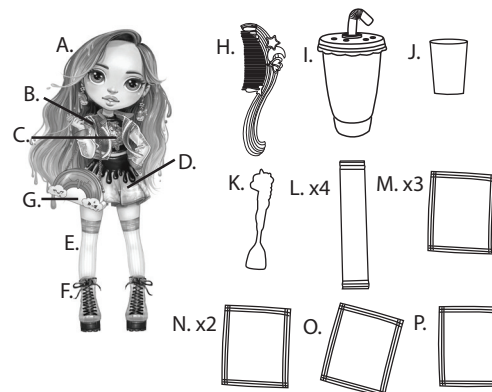
ADULT SUPERVISION REQUIRED

CONTENTS

- | | | |
|---|----------------------|---|
| A. 1 Doll | F. 1 Pair of Shoes | K. 1 Unicorn Spoon |
| B. 1 Jacket or Vest | G. 1 Purse | L. 4 Packets of Rainbow Surprise (Slime Powder) |
| C. 1 Top | H. 1 Comb | M. 3 Packets of Rainbow Shimmer (Glitter Powder) |
| D. 1 Skirt or Dress | I. 1 Bottle with Lid | N. 2 Packets of Rainbow Magic (Special Effect Powder) |
| E. 1 Pair of Socks | J. 1 Measuring Cup | O. 1 Packet of Rainbow Sparkle (Die Cut Glitter) |
| F. 1 Pair of Shoes
or Roller Skates | | P. 1 Packet of Rainbow Highlighter (Makeup) |

WHICH DOLL DID YOU GET?

Each sold separately.

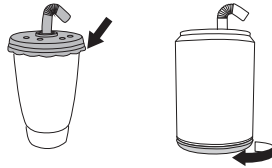


Illustrations are for reference only. Styles may vary from actual contents.

OPEN YOUR BOTTLE

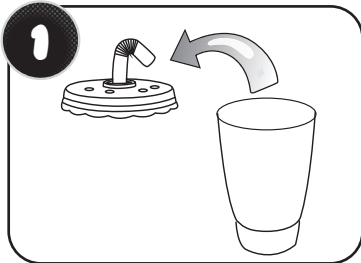
NOTE: Each bottle opens differently.

Find your surprise bottle shape below to see how to open it:

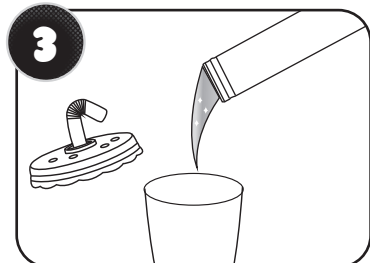


MAKE SLIME!

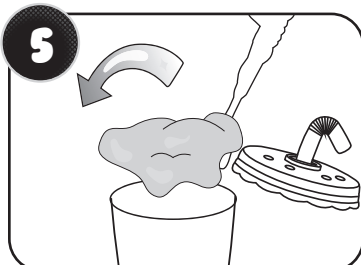
Before beginning, cover the play area to prevent possible damage.



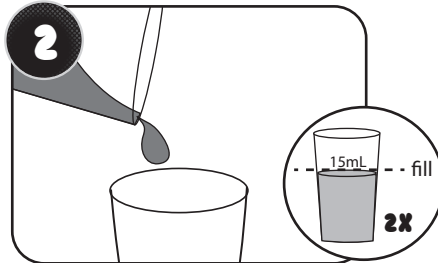
Remove the lid from the included bottle.



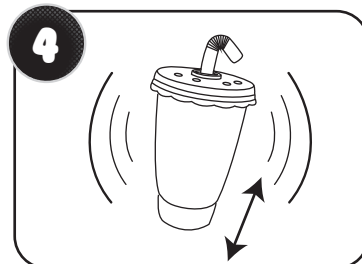
Tear open one rainbow surprise packet and pour the powder into the bottle.



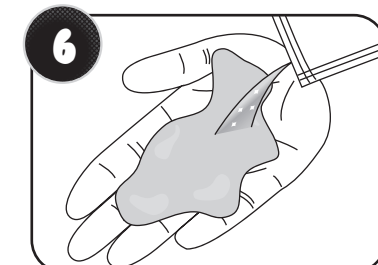
Open the lid and use the unicorn spoon to remove the slime from the bottle.



Fill the measuring cup to the fill line marked 15 mL with water, and pour it into bottle. Then, fill and repeat once more (total 30 mL of water).

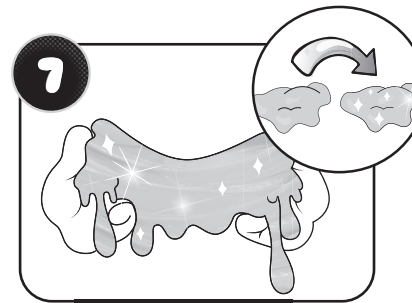


Tightly replace the lid on the bottle. Then, hold the lid, and rapidly shake the bottle up and down for 1 minute. Let the mixture sit for 10-15 minutes to allow the slime to harden.

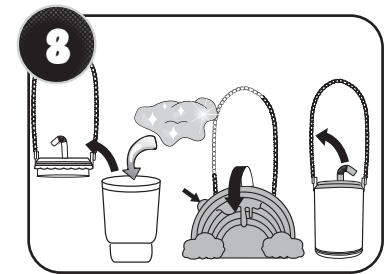


Tear open the rainbow magic packet. Hold the slime in the palm of one hand, then use your other hand to pour the powder onto the center of the slime. Add unicorn magic a little at a time.

NOTE: Tear open the rainbow sparkle and/or rainbow shimmer to add it in this step.

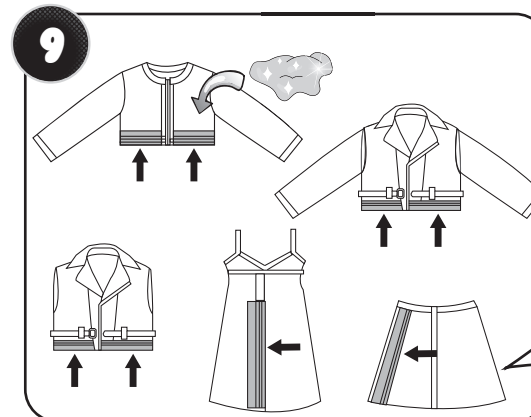


Fold the slime in half and continue folding and pulling the slime until all the powder is thoroughly blended into the slime. Your slime will change to a surprise color!

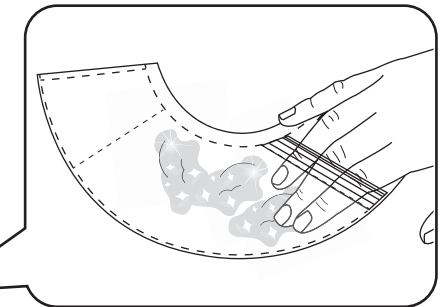


Open the purse to store your slime. Tightly replace the cover after pouring the slime.

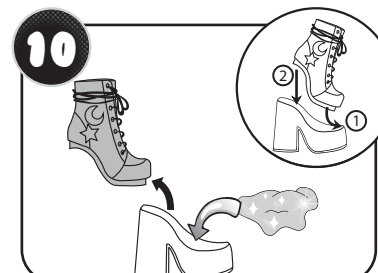
Bottles: The tops will come off.
Rainbow Bag: Pull on the tab and swing the cover down.



Locate the seal on the garment and open it to add the slime. Then, tightly close the seal to prevent spilling. If you have the dress or skirt, the seal is located on the back. Doll's arms can move in any direction to fashion the doll.



Use your fingers to push the slime into the garment.



Remove the top half of the shoe to detach from the heel. Store the slime in the heel. When replacing, slide the tip of the shoe first and then insert the back.



Tear open the rainbow highlighter packet and, using your fingers, apply to your face.

- Avoid direct contact with the eyes.
- Wash hands before and after applying cosmetics to your face.