

Encore Burst 100 IP



Light Efficiency:



Light Quality:



Color Temperature:



Output: 5157 lm

Peak: 6644 cd

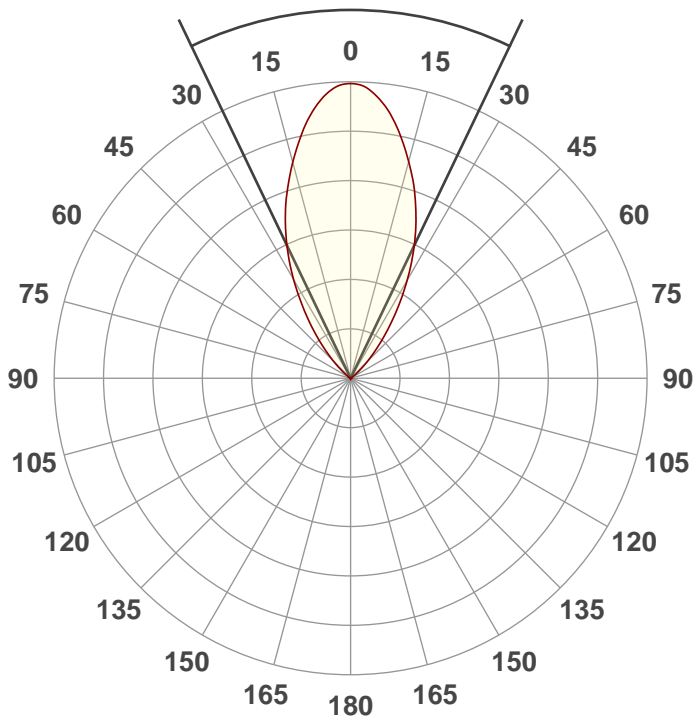
Power: 79.4 W

PF: 0.97



Beam Angle

51.2°



Test:

WW

Date:

1/10/2019

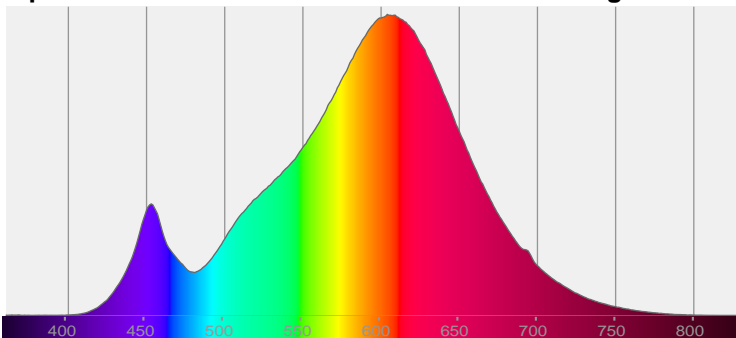
Note:



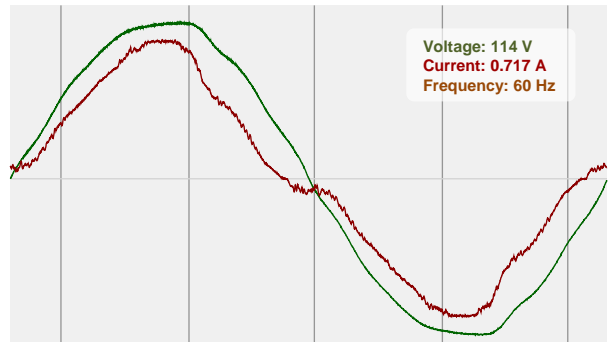
CIE 1931
x: 0.457
y: 0.410

Spectra

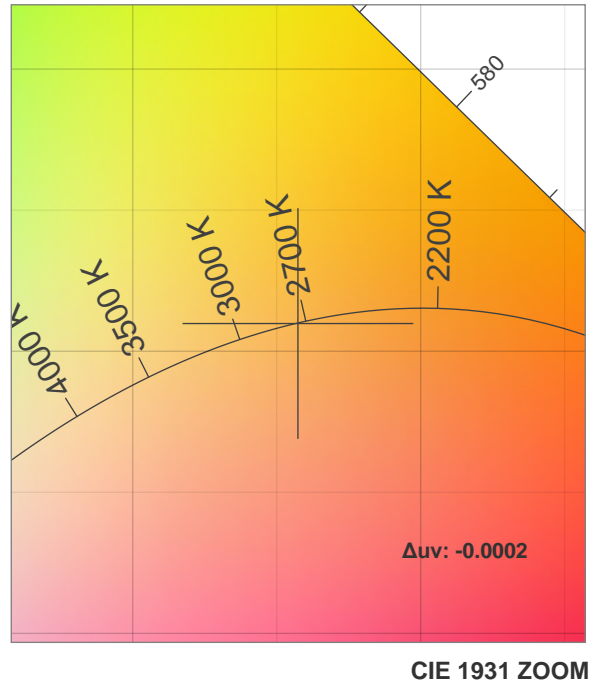
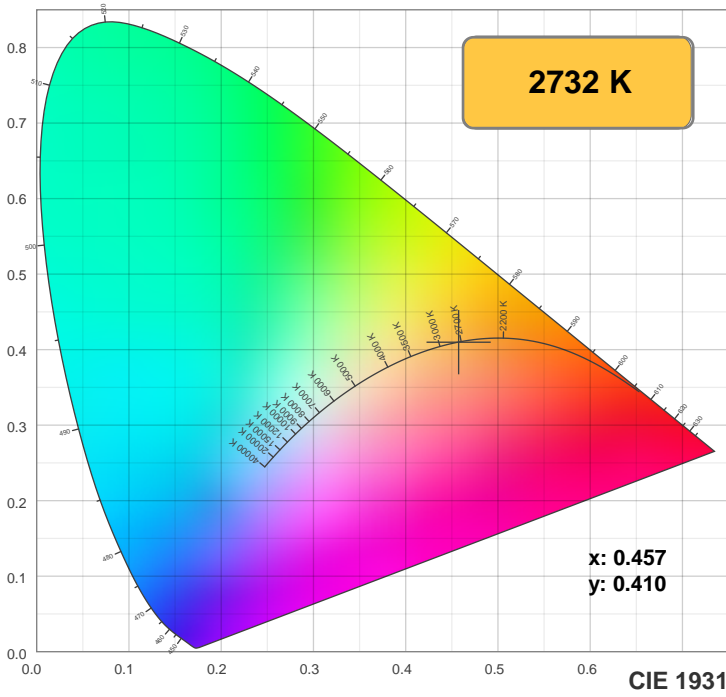
Dominant Wavelength: 585nm



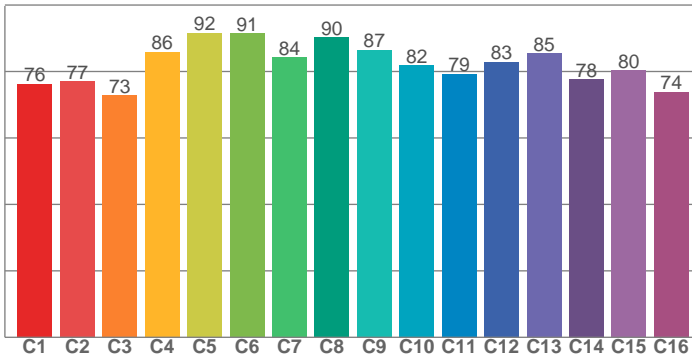
Power



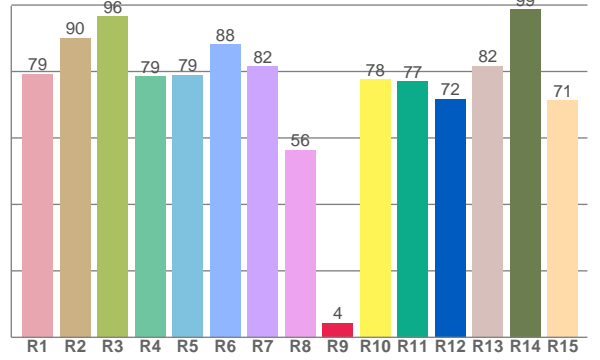
Color Details



TM30: 82.0



CRI: 81.2 (R1-R8)



CRI R values, only R1-R8 are used to calculate final CRI value

R1	R2	R3	R4	R5	R6	R7	R8	R9	R10	R11	R12	R13	R14	R15
79.3	90.1	96.5	78.6	79.0	88.2	81.6	56.4	4.3	77.6	77.2	71.8	81.7	98.7	71.3

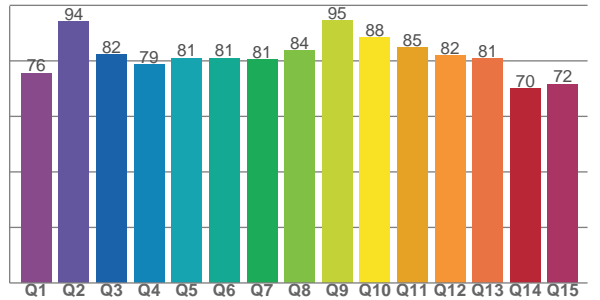
TM30 C values, 16 binned values out of total of 99 C values

C1	C2	C3	C4	C5	C6	C7	C8	C9	C10	C11	C12	C13	C14	C15	C16
76.3	77.1	72.8	85.9	91.6	91.4	84.3	90.2	86.6	81.9	79.2	82.9	85.5	77.7	80.3	73.8

CQS Q values

Q1	Q2	Q3	Q4	Q5	Q6	Q7	Q8	Q9	Q10	Q11	Q12	Q13	Q14	Q15
75.6	94.1	82.2	78.6	81.0	81.0	80.5	83.7	94.5	88.3	84.7	81.8	80.8	69.9	71.6

CQS: 80.6



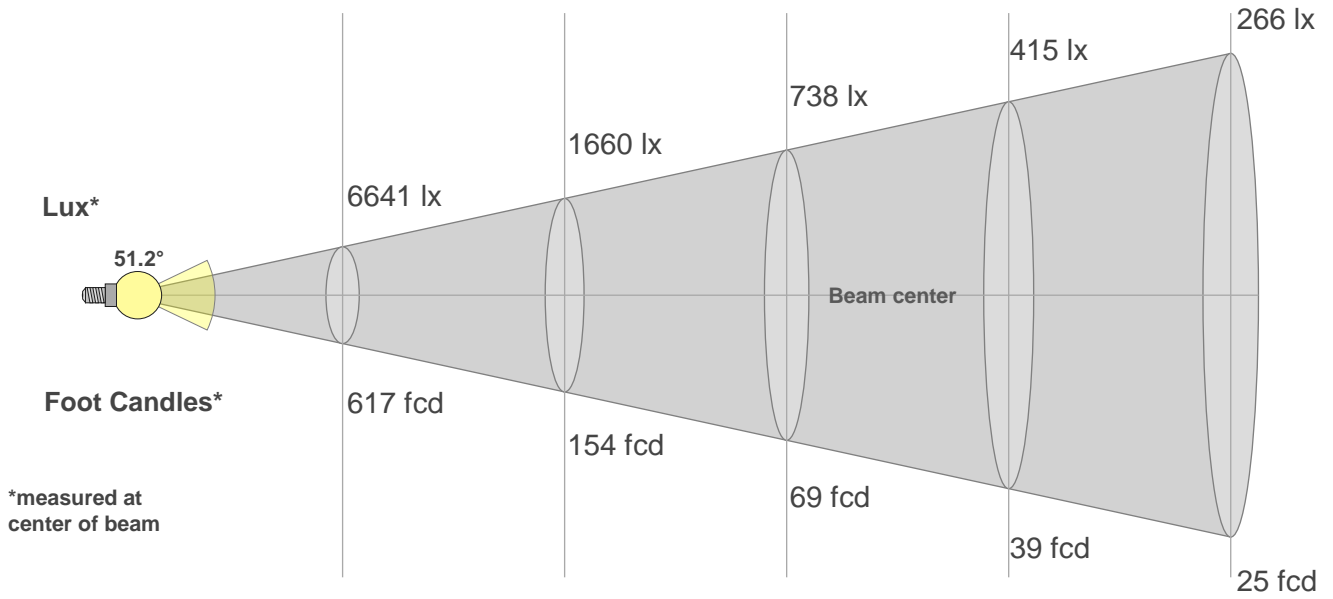
Color Parameters

Color Temperature	Color Rendering Index	Red Component	Color Fidelity	Color Gamut	Color Quality Scale	Color Coordinate CIE 1931	Color Coordinate CIE 1931	Color Coordinate	Color Coordinate	Color Deviation from Black Body
CCT	CRI	CRI R9	TM30 Rf	TM30 Rg	CQS	x	y	u	v	Δuv
2732 K	81.2	4.3	82.0	95.9	80.6	0.457	0.410	0.261	0.351	-0.0002

Beam Details

Distance (meter)
Distance (feet)

1 2 3 4 5
3.3 6.6 9.8 13.1 16.4



Beam Width (meter)
Beam Width (feet)

1 1.9 2.9 3.8 4.8
3.2 6.3 9.4 12.6 15.7

Beam Intensities from 1-20m

m	1	2	3	4	5	6	7	8	9	10	11	12	13	14	15	16	17	18	19	20
ft	3.3	6.6	9.8	13.1	16.4	19.7	23	26.2	29.5	32.8	36.1	39.4	42.7	45.9	49.2	52.5	55.8	59.1	62.3	65.6
lx	6641	1660	738	415	266	184	136	104	82	66	55	46	39	34	30	26	23	20	18	17
fcd	616.9	154.2	68.5	38.6	24.7	17.1	12.6	9.6	7.6	6.2	5.1	4.3	3.7	3.1	2.7	2.4	2.1	1.9	1.7	1.5

Intensities in 0° C-plane

0°	2°	4°	6°	8°	10°	12°	14°	16°	18°	20°	22°	24°	26°	28°	30°	32°	34°	36°	38°
6641	6608	6491	6314	6087	5820	5509	5197	4882	4565	4254	3927	3593	3255	2916	2571	2229	1904	1604	1322
100%	100%	98%	95%	92%	88%	83%	78%	74%	69%	64%	59%	54%	49%	44%	39%	34%	29%	24%	20%

Intensities in 90° C-plane

0°	2°	4°	6°	8°	10°	12°	14°	16°	18°	20°	22°	24°	26°	28°	30°	32°	34°	36°	38°
6641	6608	6491	6314	6087	5820	5509	5197	4882	4565	4254	3927	3593	3255	2916	2571	2229	1904	1604	1322
100%	100%	98%	95%	92%	88%	83%	78%	74%	69%	64%	59%	54%	49%	44%	39%	34%	29%	24%	20%

Intensities in 180° C-plane

0°	2°	4°	6°	8°	10°	12°	14°	16°	18°	20°	22°	24°	26°	28°	30°	32°	34°	36°	38°
6641	6601	6486	6310	6094	5821	5522	5214	4904	4599	4266	3934	3598	3253	2902	2551	2211	1883	1570	1295
100%	99%	98%	95%	92%	88%	83%	79%	74%	69%	64%	59%	54%	49%	44%	38%	33%	28%	24%	20%

Intensities in 270° C-plane

0°	2°	4°	6°	8°	10°	12°	14°	16°	18°	20°	22°	24°	26°	28°	30°	32°	34°	36°	38°
6641	6601	6486	6310	6094	5821	5522	5214	4904	4599	4266	3934	3598	3253	2902	2551	2211	1883	1570	1295
100%	99%	98%	95%	92%	88%	83%	79%	74%	69%	64%	59%	54%	49%	44%	38%	33%	28%	24%	20%

Beam Angle 50%	Field Angle 10%	Cutoff Angle 2,5%	Intensity Ratio in 120° Cone	Intensity Ratio in 90° Cone
51.2°	87.2°	102.1°	99.7%	95.7%