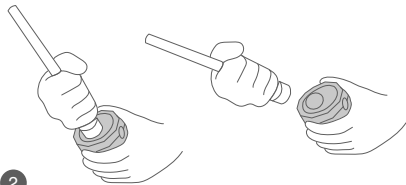


Quick Start Guide

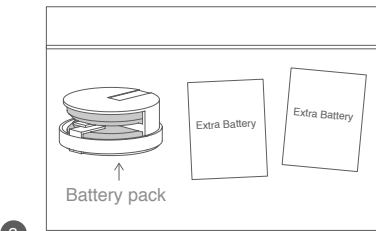
1

Before putting water in your bottle, unscrew the cap of the bottle and remove the sensor from the lid by grabbing the stick close to the lid firmly in one hand while holding the bottle cap in the other hand. Now in a snapping motion remove the sensor from the bottle lid at an angle.



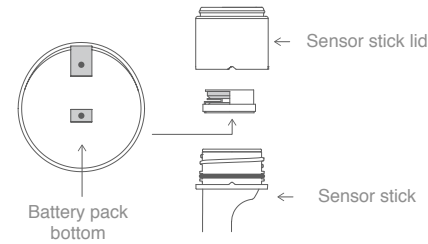
2

Remove the assembled battery pack from the bag, which also contains extra batteries.



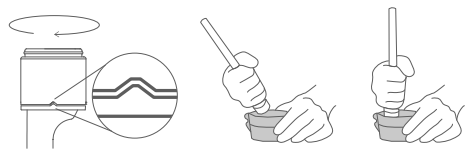
3

Remove the sensor stick lid and make sure the battery pack is facing the correct way. The side with two metal dots should be facing downwards and coming in contact with the sensor stick.



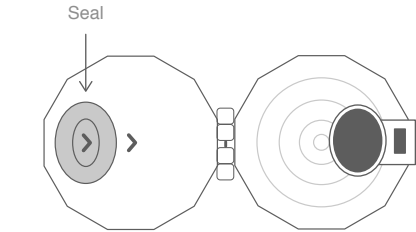
4

Then screw down the cap keeping the battery pack in place. When the triangular notches are aligned, the cap has been screwed down fully and is watertight. The sensor stick will glow if you have inserted the battery pack the correct way. Then reattach the sensor stick to the lid with the flat side of the sensor facing the hinge. The lights are on the rounded side of the sensor stick so those should be facing forward.



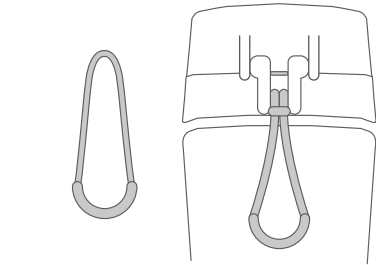
5

Press the drop button to open the lid and make sure the arrow on the seal and on the inside of the lid are facing the same direction. (This prevents the bottle from leaking).



6

Attach the finger loop to the bottom metal pin on the back of the lid by sliding the string underneath the metal pin and then looping it through itself.

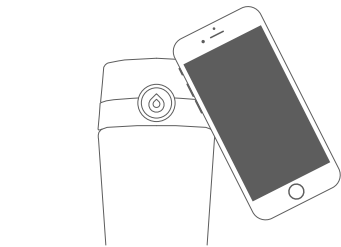


7

Download the free Hidrate Spark Smart Water Bottle app from the app store or Google Play store. If you've already done so and have set up the app then see the section "Add Bottle From Profile."

Ensure you have an internet connection and your Bluetooth is turned on. Proceed through the app setup steps until you reach the "pair with your bottle screen." If you are on Android, make sure to say "yes" to using location.

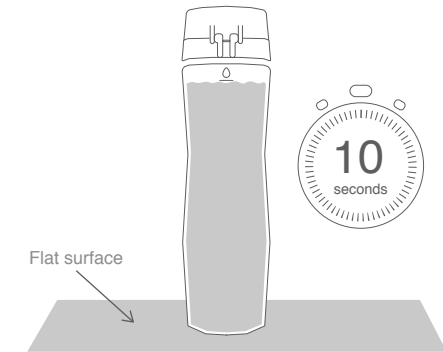
The app will search for a bottle close by. When it has found a bottle it will prompt you to touch your phone to the lid of the bottle and wait for it to connect. This can take up to a couple of minutes so be patient. You will want to make sure you are away from other Bluetooth devices, as they might interfere with this process.



Once the bottle is paired it will glow and you will see check marks with a message that says, "Successfully added the bottle". Then finish setting up the app by creating an account. If you have trouble with this pairing process, please email us at support@hydrate.me and our customer support team will help you out.

8

Fill the bottle up to the fill line on the back and screw the lid all the way down. Set the bottle on a flat surface for 10 seconds so that your bottle can calibrate. (You must do this anytime you change batteries or remove the sensor cap). Then drink normally.



Best Practice Tips

SET THE BOTTLE DOWN AFTER YOU FILL IT UP OR DRINK OUT OF IT FOR SEVERAL SECONDS as there is an orientation sensor in the bottle which will only take accurate readings when the bottle is sitting upright on a flat surface.

The bottle can store two days worth of data without syncing before it starts deleting old data. You must open the app, be within range (10 ft) of your bottle and sync with the bottle at least every two days to ensure you keep all of your data.

You can add more water to the bottle even if there is water in it without messing up the amount you have drunk.

To dump out water you don't want to drink, make sure to remove the lid and pour out the water. If you pour it out of the mouthpiece it will register as water you have drunk.

A bottle can only be associated with one account. You can have multiple bottles per account, however you will only be paired with one bottle at a time. This is usually the one you were most recently close to. To pair a bottle to someone else's account you must first unpair it from your own.

Do not put any other liquids besides water in your bottle as that may damage the sensor.

You can put ice in the bottle but do not put the bottle in the freezer, as that may damage the sensor.

Daily Goal

Your height, age, weight, activity level, gender, location, temperature, humidity, elevation, and activity from any fitness tracking apps you sync the app with will all factor into the equation we have created to generate your optimal hydration goal for each day.

Your recommended daily goal can change from day to day, and sometimes even throughout the day if you are suddenly very active or you experience a change in location and weather.

You can also set a manual goal if you like. Go to settings and click on "goal" and enter the amount of oz/ml that you would like to set as your goal.

The pulsing 3 dots on the progress ring are an indicator of where your progress should be at throughout the day in order to meet your goal.

Glow Notifications & Push Notifications

You can access your settings using the gear icon on your profile screen for iOS, and within the navigation tabs for Android.

Go to "Bottle Glows" and you can set how many times you want it to glow throughout the day, and the glow type.

Go to "Push Notifications" and choose how many you would like to receive each day. Remember, you must also allow push notifications from within your phone's settings to receive our witty reminders.

You can also choose to turn off glow notifications and push notifications by setting the number to 0.

Also, go into your profile and personal info in settings to set your awake and sleep times so that you only get notifications when you are awake.

Cleaning & Care

DO NOT PUT THE SENSOR STICK IN THE DISHWASHER!

The best way to clean your bottle is by removing the lid and then immediately removing the sensor stick. Make sure the lid of the sensor stick is screwed down all the way so triangles on the sensor shaft align perfectly and protrude into the triangle notches on the lid

Simply hand wash the sensor stick under the faucet with warm water. DO NOT put the sensor stick in the dishwasher as that may damage the sensor.

You can put the bottle and lid in the dishwasher. Be sure to clean your bottle every so often. When the bottle and lid are clean just reattach the sensor stick and you're good to go.

Also, remove and clean the mouth seal on the inside of the lid. When you place the mouth seal inside the bottle cap, ensure the two arrows point in the same direction.

Add Bottle From Profile

Within your profile screen click the button "Add Bottle."

The app will search for a bottle close by. When it has found a bottle it will prompt you to touch your phone to the lid of the bottle and wait for it to connect. This can take up to a couple of minutes so be patient. You will want to make sure you are away from other Bluetooth devices, as they might interfere with this process.

If your phone prompts you to pair with the bottle, click the "Pair" button.

Once the bottle is paired it will glow and you will see check marks with a message that says, "Successfully added the bottle".

Fill your bottle completely with water. Make sure the sensor stick is attached to the lid securely. Screw on the bottle lid and let sit on a flat stable surface for 10 seconds to calibrate.

Attention

Your Hidrate Spark bottle contains two CR2032 Lithium batteries. During the battery replacement process these batteries represent a choking hazard. Do not expose your bottle to fire, heat it in a microwave oven, place in a freezer or otherwise expose it to extreme temperatures. Remove the sensor stick before dishwashing the bottle and lid. Do not put the sensor stick in the dishwasher. To replace the batteries just purchase 2 new CR2032 coin cells and follow the "Manually Replacing Batteries" instructions on the back.

DO NOT put the bottle and sensor in the freezer as it may damage the sensor.
DO NOT put the sensor stick in dishwasher as it may damage the sensor.
DO NOT put hot liquids in the bottle as it may damage the sensor.
DO NOT unscrew the lid of the sensor stick unless you are changing the batteries.
DO NOT put water in your bottle unless your sensor stick lid is screwed down all the way.

If you still have questions:
Visit our website: www.hidratespark.com
Or email us at: support@hydrate.me

App Home Page

*The Hidrate Spark app receives frequent updates that may change the layout of some screens.

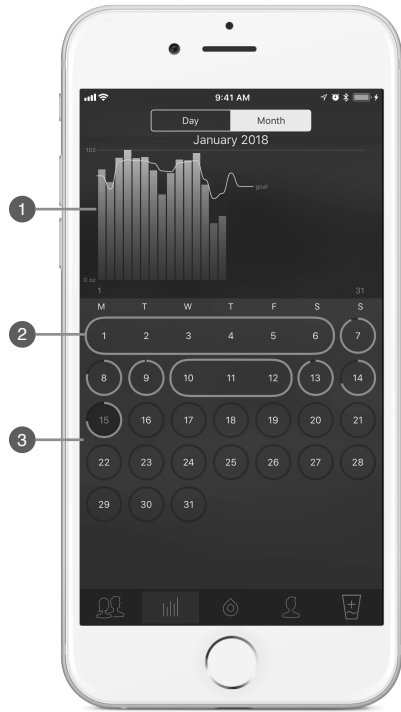


- 1 Week progress
- 2 Your progress
- 3 Your goal
- 4 Friend's progress
- 5 Connection status to bottle
- 6 Pulsing Indicator: Where you should be at throughout the day
- 7 7 day rank: Your ranking amongst all your friends
- 8 Manual Add: For when you drink outside the bottle

Swipe right to see past days

App History Page

*The Hidrate Spark app receives frequent updates that may change the layout of some screens.

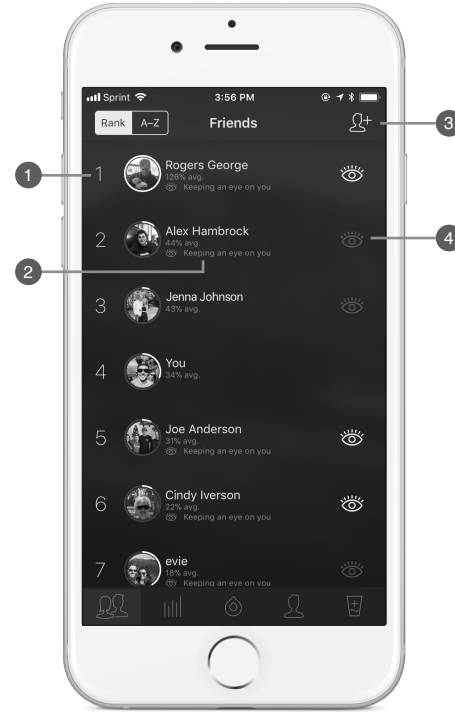


- 1 Graph of progress
- 2 Streak: When you hit your goal more than one day in a row the circles will connect
- 3 Calendar view of progress

Swipe right to see history for past months and days

App Social Page

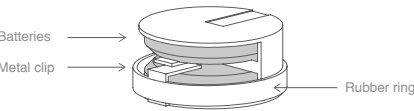
*The Hidrate Spark app receives frequent updates that may change the layout of some screens.



- 1 Friends rank based on their weekly average
- 2 If a friend is keeping an eye on your progress
- 3 Add friends
- 4 Keep an eye on friends and add them to your home screen

Manually Replacing Batteries

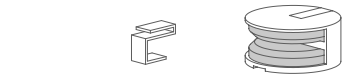
The Hidrate Spark uses 2 CR2032 batteries, which can be found at most stores. Remove the sensor stick from the bottle lid, unscrew the sensor lid from the sensor stick and remove the battery pack.



Remove the rubber ring securing the battery pack.



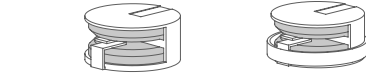
There will also be a small metal clip that creates a contact between the batteries within the pack. Carefully remove that clip.



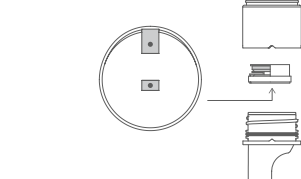
Then remove the batteries from the plastic pack using a tweezers and dispose of them appropriately. Replace with the new batteries. The - (negative) sides of the batteries should be facing each other in the pack and the + (positive) sides of the batteries should both be facing outwards.



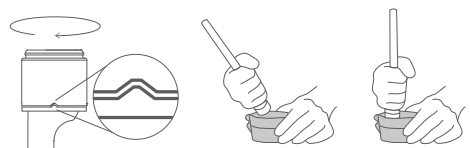
Replace the small metal clip to create a contact between the batteries. Then place the rubber band around the pack to secure the batteries and small metal clip.



Make sure the battery pack is facing the correct way. The side with two metal dots should be facing downwards and coming in contact with the sensor stick.

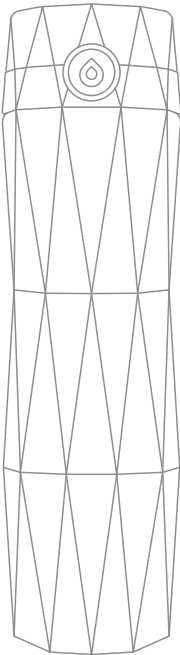


Then screw down the cap keeping the battery pack in place. Make sure to screw it down fully. When the triangular notches are aligned the cap has been screwed down fully. The sensor stick will glow if you have inserted the battery pack the correct way. Then reattach the sensor stick to the lid and you're good to go.



hidrate spark 2.0

Quick Start Guide



Always set your bottle down on a flat surface after you drink or refill it for the most accurate tracking.

Need help? Email support@hidrate.me