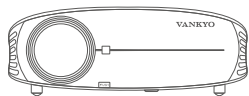




LEISURE 510PW USER MANUAL

Please read this manual thoroughly before using and keep it for future reference.

PACKING LIST



LEISURE 510PW



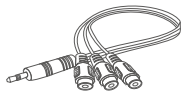
Carrying Bag



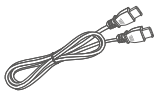
Remote
(Batteries Not Included)



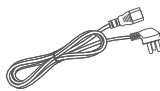
User Manual



AV Cable



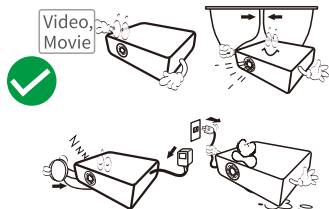
HD Cable



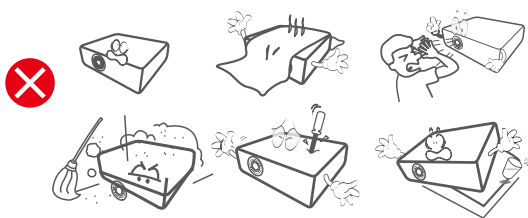
Power Cable

NOTICE

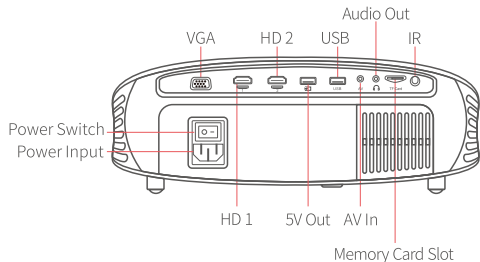
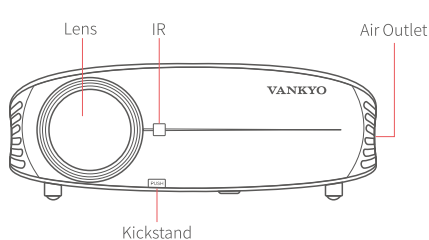
Recommended



NOT Recommended

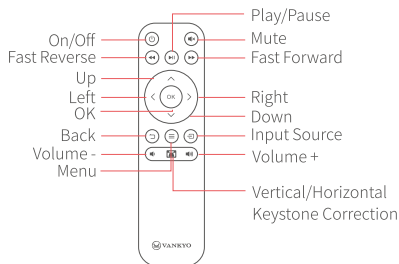
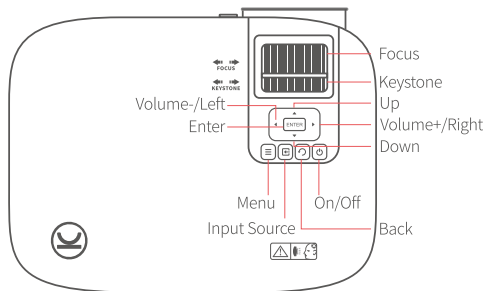


FUNCTION OVERVIEW

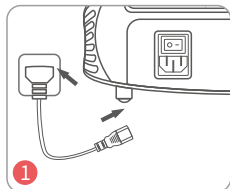


! Note:

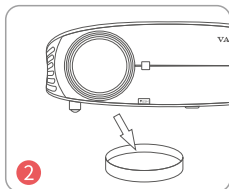
* Please clear the dust in the air outlet regularly.



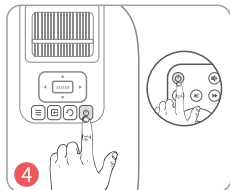
QUICK START



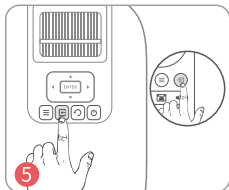
Plug the power cord into an outlet and switch on the **Power Switch**.



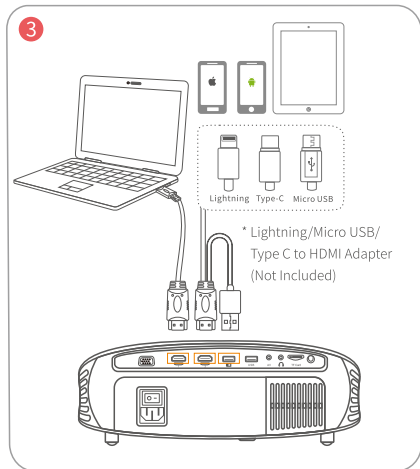
Take off the lens cover.



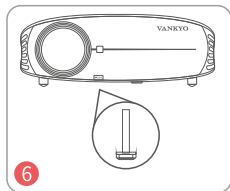
Press the **Power Button** to turn on the projector.



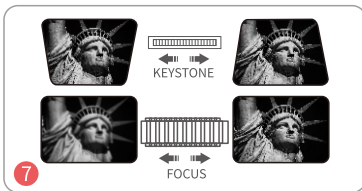
Select the correct input source to project your device.



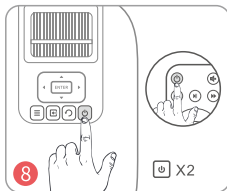
Connect your device to the projector correctly.



Press the **PUSH** button on the projector to adjust the kickstand accordingly.



Adjust the keystone and focus ring to get the best image performance. (Press on the remote to correct the image shape as needed.)




Switch off the **Power Switch** or press the **Power Button** twice to turn off the projector.

KEYSTONE CORRECTION

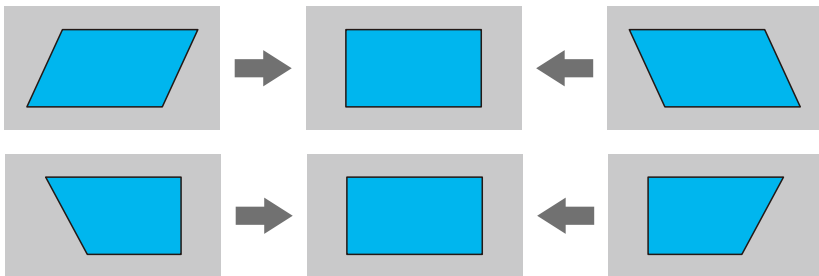
Option 1:

Adjust the keystone on the projector to adjust the image shape.

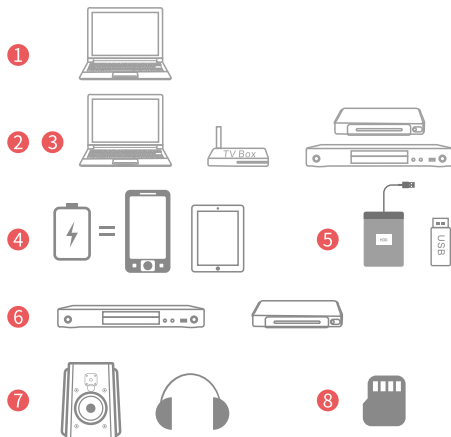
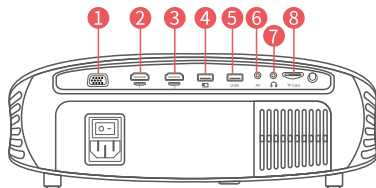
Option 2:

Go to **Homepage > Setup > Projection Image Setting > 4 Point Keystone > OK** or press  button on the remote directly to enter the interface of keystone correction, then press the **Up/Down/Left/Right** button to start correcting the image shape.

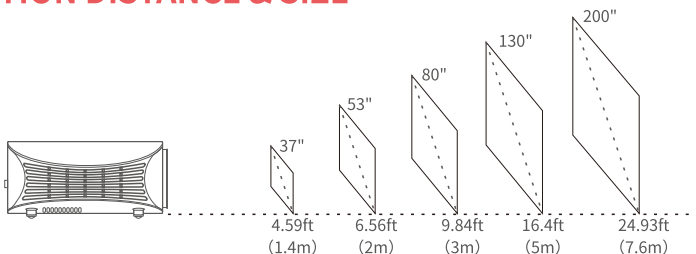
Horizontal & Vertical Correction



PROJECTOR CONNECTION



PROJECTION DISTANCE & SIZE



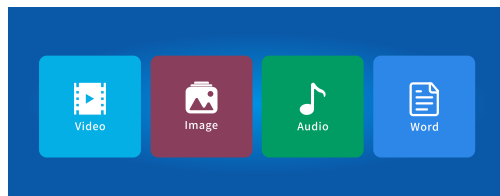
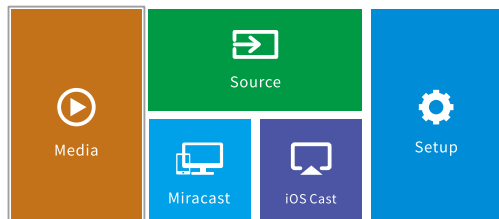
* The recommended projection distance varies with different projection contents. Please adjust the distance between the wall/screen and the projector properly as needed.

* Ambient darkness will improve the clarity of the projected images.

MULTIMEDIA CONNECTION

Projecting from USB Disk/Memory Card

1. Turn on the projector and insert your USB disk/memory card into the USB port/memory card slot.
2. Go to **Homepage** to select **Media**, it will display the interface below.



3. Select the category of the file you would like to project accordingly.

- * To play the video, select **Video**, then find your video file and play it by pressing the **OK** button.
- * To project photo, select **Image**, then find your photo and play it by pressing the **OK** button.
- * To play the audio file, select **Audio** to find your audio file. Select it first by pressing the **OK** button, then select the **Play** option to start playing.
- * To project the word file, select **Word**, then find your word file and open it by pressing the **OK** button.

Different File Formats Supported

Text Format Supported: TXT

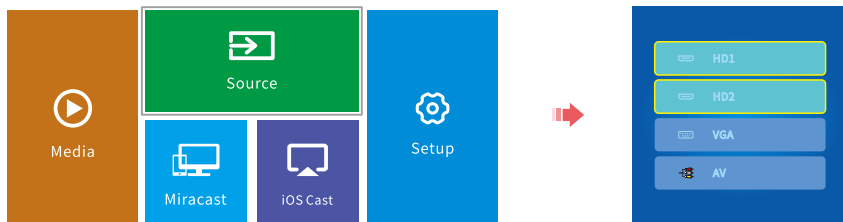
Image Format Supported: JPEG/BMP/PNG

Audio Format Supported: AAC/MP3/FLAC/OGG/APE/AMR/WAV/MP2

Video Format Supported: AVI/MP4/MKV/FLV/MOV/RMVB/3G2/MPG/VOB/SWF/MPG/H.264/TS

Projecting from HDMI Input Connection

1. Turn on the projector, then connect the projector to your device with the provided HD cable.
2. Go to **Homepage**, then select **Source > HD1/HD2** to project the contents from your device to the screen/wall.



Projecting from VGA Input Connection

1. Turn on the projector, then connect the projector to your device with the provided VGA cable.
2. Go to **Homepage**, then select **Source > VGA** to project the contents from your device to the screen/wall.

Projecting from AV Input Connection

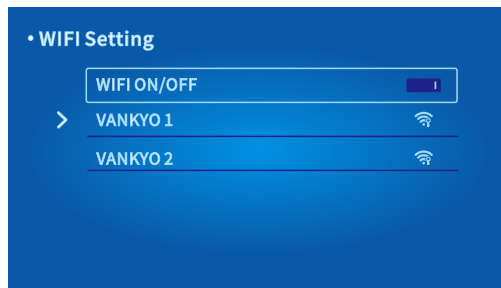
1. Turn on the projector, then connect the projector to your device with the provided AV cable.
2. Go to **Homepage**, then select **Source > AV** to project the contents from your device to the screen/wall.

! Note:

* To make the projected content more clear, such as word files, it's recommended that you place the projector closer to the wall/screen, but further than the distance of 4.59ft.

WIFI CONNECTION

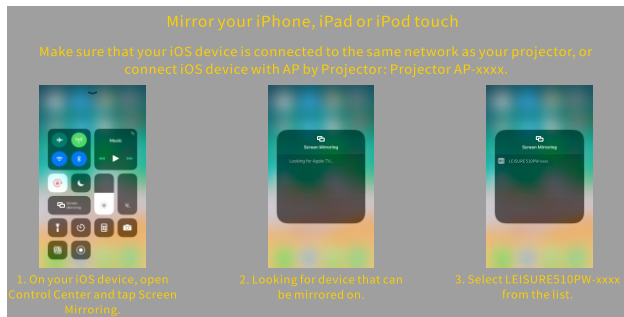
1. Go to Homepage > Setup > Wifi Setting, then enable WIFI by pressing the **OK** button to display the WIFI list.
2. Press the Up/Down button to select your WiFi, then press the **OK** button to continue.
3. Enter the correct password, then select **Connect** to get Internet connection.



SCREEN MIRRORING

For iOS System

1. Connect your iOS device and the projector to the same WiFi network.
2. Go to **Homepage** > **iOS Cast** to display the following interface.



3. Activate **Screen Mirroring/AirPlay Mirroring** on your iOS device and search for the projector.
4. Select **LEISURE 510PW-xxxx** from the searching list.
5. Your iOS device display will be projected on the wall/screen.

For Android System

To activate this function, please make sure your Android device supports **Multi-screen/Wireless display**. Names may differ from different Android devices.

1. Turn the **WiFi** to **ON** status in the settings of your Android device. To make a smoother streaming, please do not connect to any WiFi on your projector.
2. Go to **Homepage** > **Miracast** to enter the following interface.

Miracast

To connect Android Mobile/Pad Device with Projector Based on WiFi-Display Technology



1. On your Android Mobile/Pad, open the settings menu.
2. Access your display settings or screen-mirroring.
3. Select your Miracast receiver: LEISURE 510PW-xxxx(mcast).

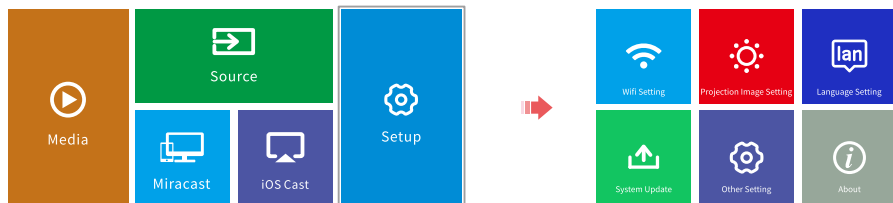
3. Activate **Multi-Screen** function on your Android device and search for the projector.
4. Select **LEISURE 510PW-xxxx** from the searching list.
5. Your Android device display will be projected on the wall/screen.

! Notes:

- 1 When you mirror your iOS device through wired connection, please prepare an extra Lightning to HDMI adapter (not included) by yourself.
- 2 When you mirror your Android device through wired connection, please prepare an extra Micro USB/ Type C to HDMI adapter (not included) by yourself.
- 3 The fluency of screen mirroring with wireless connection will be affected by the network environment. A bandwidth of 100Mbit or more is recommended when using screen mirroring.
- 4 Make sure your mobile device is close to the projector when using wireless connection. A distance within 3.3ft is recommended.
- 5 Some mobile devices may not support screen mirroring due to the compatibility.

SETTINGS

Go to **Homepage** > **Setup** to adjust the settings of your projector.



Wifi Setting

Connect the projector to your Wifi.

Projection Image Setting

Adjust the image shape by **4 Point Keystone**, set up projection mode, and adjust **Digital Zoom**.

Language Setting

Change the language.

System Update

Available options are **Online Update**, **Local Update** and **Restore Factory**, you can update the system if there is a newer version and do a factory reset as needed.

Other Setting

Set up the power on option of your projector.

About

Check the system version.

SPECIFICATION

Display Technology	LCD	Light Source	LED
Resolution	Native 1920 x 1080	Input Signal	576i、720P、1080i、1080P
Installation Type	Front/Rear/Ceiling	Aspect Ratio	4:3/16:9/Auto
Focus	Manual	Keystone	Manual: $\pm 15^{\circ}$ Digital: Horizontal $\pm 64^{\circ}$ / Vertical $\pm 36^{\circ}$
Speaker	3W/4ohm x 2	Power Supply	AC 100-240V, 50/60Hz
Unit Dimension	311 x 239 x 118mm (12 x 9.4 x 4.6 inches)	Unit Net Weight	2.5kg (5.5lb)
Photo Format Supported	JPEG/BMP/PNG	Audio Format Supported	AAC/MP3/FLAC/OGG/APE/AMR/WAV/MP2
Video Format Supported	AVI/MP4/MKV/FLV/MOV/RMVB/ 3G2/MPG/VOB/SWF/MPG/H.264/ TS	Ports	VGA Port x 1/HD In x 2/AV In x 1/ USB x 1/5V Out x 1/Audio Out x 1/ Memory Card Slot x 1
Mounting Screw	M3 Metric	Number of Screws	4

TROUBLESHOOTING GUIDE

1. The content from Hulu, Netflix, and similar services can not be mirrored or cast.

- * Due to the copyright restriction from Hulu, Netflix, and similar services, the contents MAY NOT be mirrored or cast.

2. What should I do if I want to watch the content from Hulu, Netflix, and similar services via the projector?

- * Please prepare a Fire TV stick , Roku stick or Chromecast (not included), then connect it to the projector to watch the content.

3. Projector does not turn on.

- * Make sure the **Power Switch** on the projector is switched to **ON**.

4. No Sound.

- * Turn Dolby audio off in your device.
- * External speaker is required for VGA cable connection.
- * The mute button on the remote is not pressed.

5. Blurry Image.

- * Adjust focus ring/keystone.
- * Projector and wall/screen must be in effective distance.

6. Remote Unresponsive.

- * Make sure remote points at IR receiver directly.
- * Do not cover IR receiver.
- * Try a new pair of AAA batteries.

7. Upside Down Image.

- * Go to **Homepage > Setup > Projection Image Setting > Projection Mode** to flip the projection image.

8. Factory Reset.

- * Go to **Homepage > Setup > System Update > Restore Factory** to restore the projector to default settings.

9. Zoom in/out

* Go to **Homepage > Setup > Projection Image Setting > Digital Zoon > OK**, then press the **Up** button to **Zoom in** and the **Down** button to **Zoom out**.

FCC Statement

Any Changes or modifications not expressly approved by the party responsible for compliance could void the user's authority to operate the equipment. This device complies with part 15 of the FCC Rules. Operation is subject to the following two conditions:

- (1) This device may not cause harmful interference, and
- (2) this device must accept any interference received, including interference that may cause undesired operation.

NOTE: This equipment has been tested and found to comply with the limits for a Class B digital device, pursuant to part 15 of the FCC Rules. These limits are designed to provide reasonable protection against harmful interference in a residential installation. This equipment generates, uses and can radiate radio frequency energy and, if not installed and used in accordance with the instructions, may cause harmful interference to radio communications. However, there is no guarantee that interference will not occur in a particular installation. If this equipment does cause harmful interference to radio or television reception, which can be determined by turning the equipment off and on, the user is encouraged to try to correct the interference by one or more of the following measures:

- Reorient or relocate the receiving antenna.
- Increase the separation between the equipment and receiver.
- Connect the equipment into an outlet on a circuit different from that to which the receiver is connected.
- Consult the dealer or an experienced radio/TV technician for help.

This equipment complies with FCC radiation exposure limits set forth for an uncontrolled environment .This equipment should be installed and operated with minimum distance 20cm between the radiator& your body.

This transmitter must not be co-located or operating in conjunction with any other antenna or transmitter.

ISED Warning

This device complies with Industry Canada licence-exempt RSS standard(s). Operation is subject to the following two conditions:

- (1) this device may not cause interference, and
- (2) this device must accept any interference, including interference that may cause undesired operation of the device.

Le présent appareil est conforme aux CNR d'Industrie Canada applicables aux appareils radio exempts de licence. L'exploitation est autorisée aux deux conditions suivantes:

- (1) l'appareil ne doit pas produire de brouillage, et
- (2) l'utilisateur de l'appareil doit accepter tout brouillage radioélectrique subi, même si le brouillage est susceptible d'en compromettre le fonctionnement.

The device is compliance with RF exposure guidelines, users can obtain Canadian information on RF exposure and compliance. The minimum distance from body to use the device is 20cm.

Le présent appareil est conforme

Après examen de ce matériel aux conformité ou aux limites d'intensité de champ RF, les utilisateurs peuvent sur l'exposition aux radiofréquences et la conformité and compliance d'acquérir les informations correspondantes.

La distance minimale du corps à utiliser le dispositif est de 20cm.

Operation of this device in the band 5150-5350 MHz is restricted to indoor use only.

Le fonctionnement de cet appareil dans la bande 5150-5350 MHz est limité à une utilisation en intérieur uniquement.

CAUTION



The symbol indicates AC voltage



RECYCLING

This product bears the selective sorting symbol for Waste electrical and electronic equipment (WEEE). This means that this product must be handled pursuant to European directive 2012/19/EU in order to be recycled or dismantled to minimize its impact on the environment. User has the choice to give this product to a competent recycling organization or the retailer when he buys a new electrical or electronic equipment.

This product can be used across EU member states.

The device is low power device, it can meet the requirement of the RF exposure.

EU Compliance Statement: Shenzhen VanTop Technology & Innovation Co., Ltd. hereby declares that this device is in compliance with the essential requirements and other relevant provisions of the Directive 2014/53/EU.

A copy of the EU Declaration of Conformity is available online at <https://doc.vantop.com/>.



AT	BE	CY	CZ	DK	EE	FI
FR	DE	EL	HU	IE	IT	LV
LT	LU	MT	NL	PL	PT	SK
SI	ES	SE	UK	BG	RO	HR

In all EU member states, operation of 5150-5350 MHz is restricted to indoor use only.

VANKYO SUPPORT

North America

support@ivankyo.com

United Kingdom

support.uk@ivankyo.com



www.ivankyo.com



[@VankyoOfficial](https://www.facebook.com/VankyoOfficial)



VANKYO