

# Cheers!

Bar quality drinks  
at the touch of a button.



DRINKWORKS™  
by KEURIG



HOME BAR CARE GUIDE

# Welcome.

We recommend that you review and carefully follow this guide as well as all warnings and instructions that accompanied your drinkmaker to make the most of your Drinkworks™ Home Bar. This guide includes use, care, maintenance, and troubleshooting information for you to keep making remarkable drinks every time.

## Drinkmaker warnings.

Read and follow all warnings and instructions before use. Misuse of this drinkmaker may result in serious personal injury or property damage.

### Positioning

Set up the drinkmaker on a flat, weight-bearing, stable, heat-resistant surface away from hot surfaces, sources of heat, or open flames.

Keep out of reach of children.

Keep upright. Do not use the drinkmaker unless it is in its upright position.

### Use

Use only with Drinkworks™ Pods. Use with any other Pod may result in injury or damage to the unit.

Use only water in this drinkmaker. Do not put any other liquids or substances in the water tank except as instructed in the Cleaning Instructions.

Do not overfill the water tank.

Do not move the drinkmaker during the beverage making process.

Drinkmaker operating temperature between 41°F to 86°F (5°C to 30°C).

You must be 21 years or older to purchase or consume alcoholic beverages.

### Care

Perform maintenance only as directed in the Home Bar Care Guide.

Always drain the drinkmaker before unplugging.

Any servicing other than cleaning and user maintenance should be performed by a Drinkworks™ authorized representative.

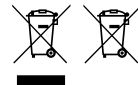
Attempting other maintenance or servicing could cause injury or damage.

### Disposal

The symbol on the product or its packaging indicates: Do not dispose of electrical appliances or batteries as unsorted municipal waste, use separate collection facilities.

Contact your local authority for information regarding the collection systems available. If electrical appliances are disposed of in landfills or dumps, hazardous substances can leak into the groundwater and get into the food chain, damaging your health and well-being.

Please contact your local or regional waste authority for more information on collection, reuse and recycling programs.



# Carbonation warnings.

System contains CO<sub>2</sub> gas under pressure. Do not puncture CO<sub>2</sub> Cartridge or expose to heat, fire, or flame. Inspect for any dents, puncture, or damage before use, and do not use if damaged.

Keep out of reach of children. Close supervision is necessary when the drinkmaker is used near children.

## Handling

Mishandling the CO<sub>2</sub> Cartridge can result in serious personal injury.

Do not throw or drop the CO<sub>2</sub> Cartridge or allow it to fall.

Do not tamper with the CO<sub>2</sub> Cartridge in any way.

Do not transport the drinkmaker with the CO<sub>2</sub> Cartridge installed in the drinkmaker.

Do not heat CO<sub>2</sub> Cartridge or leave in direct sunlight.

Do not inhale CO<sub>2</sub>.

Store CO<sub>2</sub> Cartridge in a well-ventilated cool and dry place (Max. 50°C/122°F).

Do not handle the CO<sub>2</sub> Cartridge while discharging remaining CO<sub>2</sub> by pressing the blue CO<sub>2</sub> Gas Release Button. CO<sub>2</sub> Cartridge will be extremely cold and could freeze tissue. Allow CO<sub>2</sub> Cartridge to warm up to room temperature before handling.

## Carbonation

Do not allow children to use the drinkmaker.

Use only authorized Drinkworks™ CO<sub>2</sub> Cartridges. Use of non-authorized CO<sub>2</sub> Cartridges could lead to serious injury or damage.

Do not remove the CO<sub>2</sub> Cartridge from the machine until all the CO<sub>2</sub> has been discharged from the Cartridge.

The blue CO<sub>2</sub> Gas Release Button must be depressed to release any remaining gas before removing the CO<sub>2</sub> Cartridge from the drinkmaker.

Removing CO<sub>2</sub> Cartridge before discharging all CO<sub>2</sub> could cause injury.

## Use

Inspect the CO<sub>2</sub> Cartridge before use for dents, punctures, or other damage.

If you see any, do not use the Cartridge, contact a Drinkworks™ representative.

Do not open CO<sub>2</sub> Door while drinkmaker is preparing beverage.

## End of Life

Do not attempt to refill. Empty CO<sub>2</sub> Cartridge are not refillable.

# Electrical warnings.

When using electrical appliances, basic safety precautions should be followed, including the following:

## General

Read all instructions before using.

This drinkmaker must be properly installed and located in accordance with these instructions before it is used.

Clean component parts as specified in the Home Bar Care Guide.

Always keep the water tank cover on the Water Tank unless you are refilling it.

Do not attempt to lift the drinkmaker handle while making a beverage.

To protect against fire, electrical shock, and injury do not immerse cords, plugs, or the drinkmaker in water or other liquids.

Do not use the drinkmaker for other than its intended use.

The use of non-authorized accessories may cause injuries or damage the drinkmaker.

## Positioning

Ensure that sufficient space is left around all sides of the drinkmaker to allow air to circulate.

Do not obstruct the vents on the sides and rear of the drinkmaker.

Do not place on or near a hot gas or electric burner, or in a heated oven.

Keep your drinkmaker away from direct sunlight and heat sources.

Do not use outdoors. The drinkmaker is intended for indoor use only.

Do not let the cord hang over the edge of the table or counter, or touch hot surfaces.

Use of accessory attachments are not recommended by the drinkmaker manufacturer and may result in fire, electrical shock, or injury to persons.

## Cords and Grounding

The drinkmaker is equipped with a power cord having grounding wires with a grounding plug.

**GROUNDING INSTRUCTIONS:** This drinkmaker must be grounded. In the event of malfunction or breakdown, grounding provides a path of least resistance for electric current to reduce the risk of electric shock. This drinkmaker is equipped with a cord having an equipment-grounding conductor and a grounding plug. The plug must be plugged into an appropriate outlet that is properly installed and grounded in accordance with all local codes and ordinances.

## Cords and Grounding (Cont.)

**DANGER** – Improper connection of the equipment-grounding conductor can result in a risk of electric shock. The conductor with insulation having an outer surface that is green with or without yellow stripes is the equipment-grounding conductor. If repair or replacement of the cord or plug is necessary, do not connect the equipment-grounding conductor to a live terminal. Check with a qualified electrician or serviceman if the grounding instructions are not completely understood, or if in doubt as to whether the drinkmaker is properly grounded. Do not modify the plug provided with the drinkmaker – if it will not fit the outlet, have a proper outlet installed by a qualified electrician.

This appliance is for use on a nominal 120 V circuit, and has a grounding plug that looks like the plug illustrated in sketch A in Figure 1.

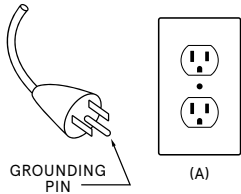


Figure 1

**SHORT CORD INSTRUCTIONS:** A short power supply cord is provided to reduce the risk of becoming entangled in or tripping over a longer cord. If an extension cord is used: (1) the marked electrical rating of the cord set or extension cord should be at least as great as the electrical rating of the appliance, (2) the cord should be arranged so that it will not drape over a counter-top or table top where it can be pulled on by children or tripped over unintentionally, and (3) the extension cord must include a 3-prong grounding plug.

**EXTERNAL CLEANING:** It is ideal that the product is unplugged while cleaning the exterior of the appliance.

**WHEN UNPLUGGING POWER:** To disconnect, turn off power switch, then remove plug from outlet.

Do not unplug by pulling on cord. To unplug, grasp the plug, not the cord.

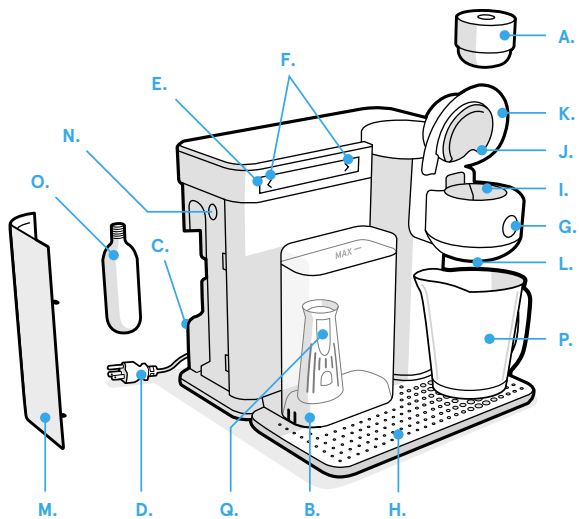
THIS PRODUCT IS FOR HOUSEHOLD USE ONLY.



# Contents:

Drinkmaker Warnings.....	i
Carbonation Warnings .....	ii
Electrical Warnings .....	iii
About Your Home Bar .....	02
Using Your Home Bar.....	03
<i>Positioning the drinkmaker</i> .....	03
<i>Chilling</i> .....	04
<i>Making a drink</i> .....	05
<i>Get connected</i> .....	08
Tips For Pouring a Beer .....	09
Drinkmaker Controls & Menu Functions.....	10
Home Bar Care & Cleaning .....	12
CO <sub>2</sub> Cartridge Care & Replacement .....	20
Drinkmaker Status .....	24
Troubleshooting .....	25
Helpful Hints .....	28
Home Bar Warranty .....	29

# About your Home Bar.



- |                        |                 |   |
|------------------------|-----------------|---|
| A. Pod (Not Included)  | G. START Button | M. CO <sub>2</sub> Side Door            |
| B. Water Tank          | H. Drip Tray    | N. CO <sub>2</sub> Gas Release Button   |
| C. Power Button        | I. Pod Basket   | O. CO <sub>2</sub> Cartridge            |
| D. Power Cord          | J. Pod Door     | P. Half-Gallon Container (Not Included) |
| E. Display             | K. Handle       | Q. Water Filter                         |
| F. Touch Arrow Buttons | L. Tap          |   |

# Using your Home Bar.

## Positioning the drinkmaker.

Place your drinkmaker in an open, uncluttered area in your kitchen or bar area. Leave the following distance around your drinkmaker:

At least 2 inches (5 centimeters) from any wall.

For the best performance of the drinkmaker's cooling and cleaning features, we recommend that you always keep your drinkmaker plugged in and powered on.

Always remove the Water Tank from the drinkmaker to fill the Water Tank. Do not bring the drinkmaker to the sink to refill the Water Tank. Do not fill beyond the **MAX** Fill line. Using bottled or filtered water is recommended, but optional.

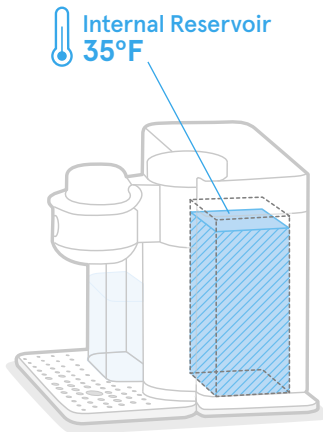
**FILL THE WATER TANK WITH WATER OR ICE WATER ONLY, EXCEPT AS OTHERWISE INSTRUCTED DURING A CLEAN CYCLE.**

# Using your Home Bar.

## Chilling...

Your drinkmaker will chill water to 35° F in an internal reservoir. The drinkmaker will begin cooling the water as soon as you add water to the Water Tank. Cooling water takes time; to speed up this process, add ice to your Water Tank before you add water. The Display will let you know when the drinkmaker is cooling and how long it will take before the internal reservoir is fully chilled. To make drinks with carbonation, the internal reservoir must be fully chilled. You can make non-carbonated drinks at any time, but it is recommended that you add ice to your glass if the internal reservoir is still "Chilling..." To avoid additional cooling time, we recommend that you keep your drinkmaker plugged in and powered on all the time.

**NOTE: Make sure to empty the internal reservoir before unplugging or powering down your drinkmaker. You can do this by running an Empty Cycle found on page 14.**

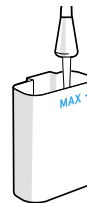


*Tip! When hosting a party or making lots of drinks we recommend that you always keep your Water Tank filled with ice, so you never have to wait for a cold drink!*

# Using your Home Bar.

## Making a drink.

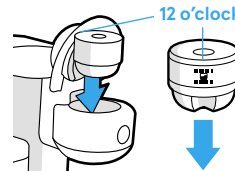
1. Fill the Water Tank as instructed by the Display.



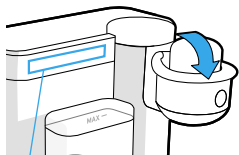
2. Lift up the Handle on the Pod Door to reveal the Pod Basket.



3. Place a Drinkworks™ Pod into the Pod Basket. Make sure that the Pod is fully inserted with the barcode on the Pod label at 12 o'clock position – facing away from you.



4. Close the Pod Door by pulling the Handle down. Wait for drinkmaker to recognize your drink and prepare the recipe.



AUTHENTIC DRINKWORKS  
POD FOUND

5. Place appropriate sized glass underneath the Tap on top of the Drip Tray. The Display will alert you to the correct size glass to use based on the drink you have selected.

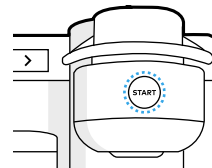


PLACE GLASS  
PRESS START!

*Tip! Serving recommendations for each drink including glassware, garnish, and ice can be found on the Pod tube, Drinkworks™ App, or at [www.drinkworks.com](http://www.drinkworks.com).*

6. When the recipe is ready, the START Button will flash blue. Press the START Button to make a drink!

**NOTE: If you do not push the START Button within 60 seconds, the light will stop flashing blue. Re-load the drink recipe by opening and closing the Pod Door using the Handle.**



ENJOY!

7. The Display will notify you when your drink is ready to enjoy. Please enjoy responsibly!

**NOTE: It is recommended that you remove the Pod from your drinkmaker after your drink has been made.**



# Using your Home Bar.

## Get connected.

Your drinkmaker comes with built-in Bluetooth® Low Energy 4.2 technology. This technology allows your drinkmaker to communicate with the Drinkworks™ App about its performance in order to help us improve its function. Once connected to the Drinkworks™ App, you will have a choice to opt in to share drinkmaker data with Drinkworks™ for these and other purposes described during the opt-in process. This feature is optional. It is not required for the drinkmaker to function properly.

Download the Drinkworks™ App from the Apple App Store or Google Play store for Android and connect to your drinkmaker to enjoy all of the features offered by your drinkmaker.

After downloading the Drinkworks™ App, you can choose to get connected to your drinkmaker with the following steps:

1. Enable the Bluetooth feature on your phone through its settings.
2. Create an account on the Drinkworks™ App and pair it with your drinkmaker by following instructions on the initial Drinkworks™ App login.
3. Your drinkmaker will send a unique key for use with pairing the app that you must confirm via the drinkmaker by pressing the Right Touch Arrow Button next to the Display panel.
4. Complete the Drinkworks™ App registration and ensure that your drinkmaker is paired and connected by viewing the “Dashboard” in the Drinkworks™ App.
5. To disconnect from the drinkmaker’s Bluetooth® go to your phone settings and press *Forget Device*.

What can I do with the Drinkworks™ App?

- Setup and register your drinkmaker.
- Watch helpful videos.
- Send unique referral codes to friends and family.
- Access tips and answers to commonly asked questions.
- Shop for new beverage Pods and more!

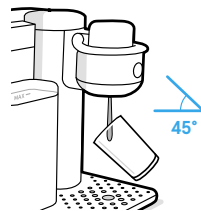
For more information visit the website [www.drinkworks.com](http://www.drinkworks.com).

# Tips for pouring a beer.

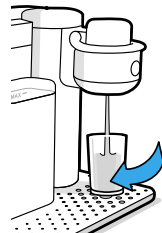
1. When making a beer, consider using a frosted glass. Give the inside of your glass a quick rinse with cold water. This will help sustain the head of the pour.



2. Hold the glass at a 45-degree angle to attain the right combination of foam and liquid.



3. Gradually straighten the glass to the upright position as beer is dispensed from the Tap.



For more information refer to the Drinkworks™ App or visit the website [www.drinkworks.com](http://www.drinkworks.com).

# Drinkmaker controls.

Arrows and START Button.

## Display Screen

Messages appear on the Display screen. Follow the prompts on the screen to complete activities.



## Solid Arrow

The Touch Arrow Buttons appear on either side of the Display. Use them to move backwards and forwards through options.



## Blinking Arrow

Touch a blinking arrow button to continue to the next step.



## START Button

Press this button to confirm an action or select an option.



# Menu functions.

Accessing the drinkmaker menu.

To access the built-in drinkmaker functions, press and hold the START Button for 3 seconds.

Press the Touch Arrow Buttons on either side of the Display to move through the options. Press the START Button to select your choice.

## Menu options include:

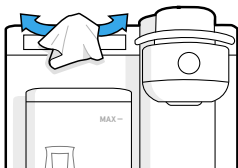
- Clean the drinkmaker\* (requires Drinkworks™ Cleaning Tablets)
- Rinse the drinkmaker\*
- Empty the drinkmaker\* (required for storage)
- Make a medium soda water (non-alcoholic)
- Make a large soda water (non-alcoholic)
- Change language to French or English
- Exit the menu

**\*NOTE:** These functions require the use of an empty half-gallon container that fits under the Tap. The drinkmaker does not include this container. Any appropriately sized container can be used for this purpose.

# Home Bar care & cleaning.

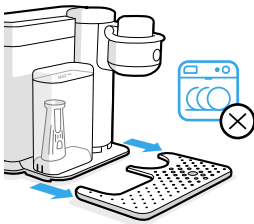
## Cleaning the Drinkmaker Exterior

Keep your drinkmaker looking its best by cleaning the exterior after making drinks. Wipe down all the surfaces on your drinkmaker with a clean, moist, lint-free, non-abrasive cloth. Never immerse the drinkmaker in water or other liquids.



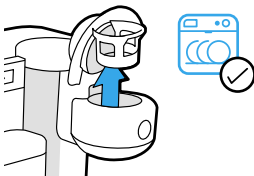
## Cleaning the Drip Tray

The Drip Tray can accumulate up to 10 ounces of liquid before it overflows. To remove the Drip Tray, slide it toward you, keeping it level at all times to avoid spilling its contents. The Drip Tray should occasionally be rinsed between cleanings. Clean the Drip Tray with a damp, soapy, lint-free, non-abrasive cloth.



## Cleaning the Pod Basket

Wash the Pod Basket at least once a week, but a quick rinse after each drink is recommended—especially after making flavorful cocktails\*. The Pod Basket is removable and can be cleaned with a damp, soapy, lint-free, non-abrasive cloth or in the top rack of the dishwasher. Keeping the Pod Basket clean helps with drink quality.



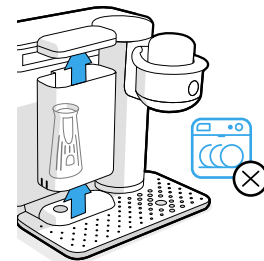
**\*WARNING:** Some beverage Pods may contain allergens such as milk, egg, wheat, nuts, or soy, or have been produced in a facility that also produces products containing milk, egg, wheat, nuts, or soy. Check the Pod packaging for allergen information. If you make a drink with such a Pod, remove the Pod Basket and clean it before your next drink, as there may be trace amounts of allergen on the basket.

## Cleaning the Water Tank and Water Tank Lid

The Water Tank and Water Tank Lid should be periodically inspected and cleaned. Neither the Water Tank or Water Tank Lid should be cleaned in the dishwasher. They should be cleaned with a damp, soapy, lint-free, non-abrasive cloth and rinsed thoroughly. Do not dry the inside of the Water Tank with a cloth as lint or other particles may transfer from the cloth to the Water Tank. To clean the filter screen at the base of your Water Tank, empty the Water Tank and follow one or all of the following procedures.

**NOTE:** If you are using a water filter inside the Water Tank, remove it before cleaning the Water Tank. For water filter replacement, consult and follow the instructions and recommendations on the filter package.

1. Rinse the filter screen with the strong force of water from your faucet.
2. If you have a sprayer, aim the water spray at the filter screen.
3. Fill the Water Tank with approximately two inches of clean water, close the Water Tank, and agitate (shake) the Water Tank.
4. Empty the Water Tank then fill it with clean water and return it to the drinkmaker. If needed, repeat the above procedures.



**CAUTION:** Please rinse the Water Tank thoroughly after cleaning so that no cleaners or cleaning solutions remain in this area as they may contaminate the water supply in the drinkmaker.

## Run the Rinse Cycle

Periodically run the drinkmaker Rinse Cycle. The Rinse Cycle empties and refills the internal chilling tank so that drinks can be made with fresh water. Access the Rinse Cycle from the drinkmaker Menu and follow the prompts on the Display. It takes about 10 minutes to complete a Rinse Cycle.

**NOTE:** Please make sure to keep the Pod Basket in the drinkmaker while running a Rinse Cycle.

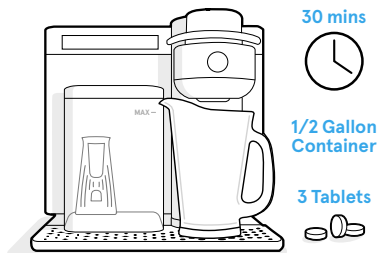
## Run the Empty Cycle

Before you unplug or power down your drinkmaker, please make sure to run an Empty Cycle. An Empty Cycle will drain the water from the Water Tank so that you can transport or store your drinkmaker. Select "EMPTY DRINKMAKER PRESS START" from the drinkmaker's menu and follow the prompts on the Display using the arrow keys to navigate through the directions.

**NOTE:** Please make sure to keep the Pod Basket in the drinkmaker while running an Empty Cycle.

## Run the Clean Cycle

The drinkmaker has a pre-programmed Clean Cycle and will indicate when it is time to clean. To run a Clean Cycle, you will need 3 Drinkworks™ Cleaning Tablets and a container that can hold at least a half-gallon of water to place under the Tap.



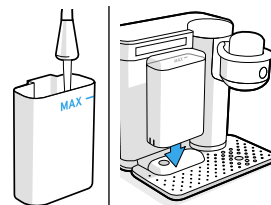
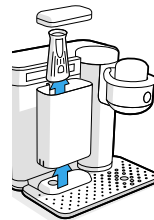
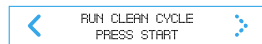
## Run the Clean Cycle

Access the Clean Cycle at any time from the menu by holding down the START Button for 3 seconds.

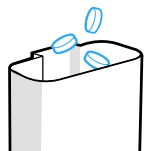
The Clean Cycle takes about 30 minutes to complete. The drinkmaker will guide you through the cleaning process and prompt you when it requires you to do such things as: adding cleaning tabs, filling the Water Tank, or emptying the container. After completing each step on the display, press the Right Arrow Button to move to the next step. Press the Left Arrow Button to go back to the previous step.

**NOTE:** Please make sure to keep the Pod Basket in the drinkmaker while running a Clean Cycle.

1. Initiate a Clean Cycle by selecting "RUN CLEAN CYCLE PRESS START" from the drinkmaker menu by pressing the START Button when that message is being displayed.
2. Remove and empty the Water Tank. If you are using a water filter inside the Water Tank, remove it now.
3. Fill the Water Tank to the MAX fill line and replace it on the drinkmaker.



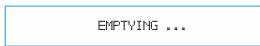
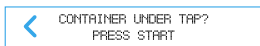
4. Add three Drinkworks™ Cleaning Tablets to the Water Tank.



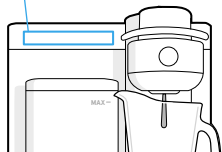
5. Place a half-gallon container under the Tap.



6. Press START Button to empty the drinkmaker. The drinkmaker will Display “EMPTYING...” until this step is complete.



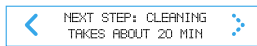
7. Empty the half-gallon container down the drain and put it back under the Tap.



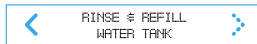
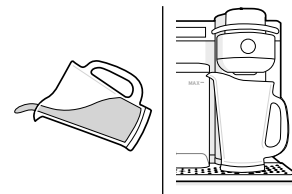
8. Wait for Drinkworks™ Cleaning Tablets to completely dissolve (approximately 10 minutes).



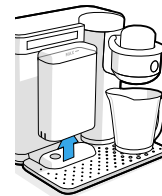
9. Press START Button to begin cleaning (takes about 20 minutes). The drinkmaker will Display “CLEANING...” until this step is complete.



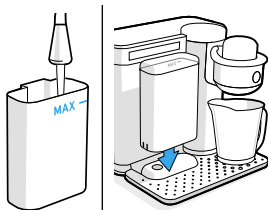
10. Empty the half-gallon container down the drain and put it back under the Tap.



11. Remove, empty, and wash the Water Tank.



12. Refill the Water Tank to the MAX Fill and replace it on the drinkmaker.

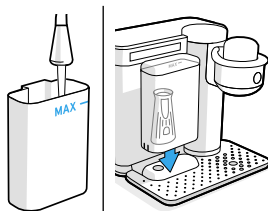


13. Press START Button to begin rinsing. The drinkmaker will Display "RINSING..." until this step is complete.



RINSING . . .

14. Empty, dry and store the half-gallon container.



15. Insert water filter in the Water Tank and refill the Water Tank.

CHEERS!  
CLEANING COMPLETE

Your drinkmaker has a built in UV light to help keep your water fresh. To prolong the life of the drinkmaker and maintain the quality of drinks, we recommend that you run the Clean Cycle every 30 days. Your drinkmaker will alert you anytime it thinks you should clean it. If you would like to be reminded later to clean simply press the Left Touch Arrow and you will be reminded to clean 24 hours later. For the UV light to perform its best, we recommend that you always keep your drinkmaker plugged in and powered on.

CLEANING RECOMMENDED  
<- IGNORE CLEAN->

## Storage

Before you store your appliance make sure to do the following things:

1. Run an Empty Cycle.
2. Vent the CO<sub>2</sub> remaining in the CO<sub>2</sub> Cartridge and remove the CO<sub>2</sub> Cartridge from the drinkmaker. See removal instructions on page 20.
3. Rinse, empty, and dry the Water Tank, Pod Basket, and Drip Tray.
4. Store your drinkmaker upright in a safe frost-free environment.

When you prepare to use your drinkmaker after storage, we recommend rinsing the Water Tank with fresh water and running a Clean Cycle before you prepare your next drink.

## Tutorials & Tips

Instructional videos are available online. You can watch step by step videos on cleaning, rinsing, emptying, and more. Visit [www.drinkworks.com](http://www.drinkworks.com).

# CO<sub>2</sub> Cartridge care and replacement.

## The on-board carbonation system.

Read and follow all warnings and instructions before using the Drinkworks™ Home Bar. It is the owner's responsibility to ensure that all users are aware of all warnings and precautions. **ONLY USE DRINKWORKS™ CO<sub>2</sub> CARTRIDGES WITH THE DRINKMAKER.**

Please handle the Drinkworks™ CO<sub>2</sub> Cartridge with care.

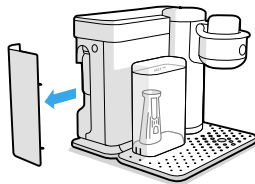
**WARNING: DRINKWORKS™ CO<sub>2</sub> CARTRIDGES** contain gas under pressure; may explode if heated. Protect from sunlight. Store in a well-ventilated place. Do not inhale. Do not drop. Do not use if damaged. Do not tamper with or modify in any way. Empty cartridge before recycling or disposal. Cartridges are not refillable. **CARTRIDGES ARE NOT A TOY AND ARE NOT INTENDED FOR USE BY PETS OR ANYONE UNDER THE AGE OF 18.**

The carbonation system is pressurized, and cartridges can become quite cold when discharging gas. Do not touch cartridge with bare skin during or immediately after discharging CO<sub>2</sub>. Wait for the cartridge to get to room temperature before handling. Refer to the safety information (pg. 3), or visit support for more information: [www.drinkworks.com](http://www.drinkworks.com).

The Display on the drinkmaker will alert you when you are out of CO<sub>2</sub> and need to replace it. The Display will also alert you when you have successfully installed the Drinkworks™ CO<sub>2</sub> Cartridge.

### Drinkworks™ CO<sub>2</sub> Cartridge Removal

1. Remove CO<sub>2</sub> Side Door.
  - a. Place hand in the back groove of the CO<sub>2</sub> Side Door.
  - b. Pull away from the appliance (the door will pivot near the front of the CO<sub>2</sub> Side Door on two tabs).
  - c. Slide the CO<sub>2</sub> Side Door tabs out and place the CO<sub>2</sub> Side Door to the side.



2. Press and hold the blue CO<sub>2</sub> Gas Release Button to release any remaining pressure, which will unlock the cartridge from the drinkmaker. When pressurized, the cartridge will be in the locked position.

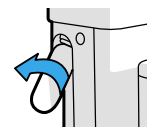


3. When you no longer hear gas releasing, and the Drinkworks™ CO<sub>2</sub> Cartridge is at room temperature, pull the bottom of the cartridge away and up from the appliance until the cartridge is sticking out at a 45-degree angle.



4. Hold the cartridge up at 45 degrees and unscrew until you can remove the empty Drinkworks™ CO<sub>2</sub> Cartridge from the drinkmaker.

**NOTE: You may hear a final release of gas as you unscrew the cartridge.**



5. Dispose of the empty Drinkworks™ CO<sub>2</sub> Cartridge. See disposal instructions on page 23.



## Drinkworks™ CO<sub>2</sub> Cartridge Install

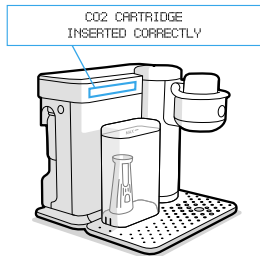
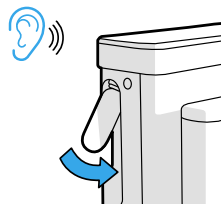
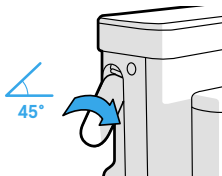
1. Insert full Drinkworks™ CO<sub>2</sub> Cartridge at a 45-degree angle into the receiving end on the drinkmaker\*. While holding the cartridge up at a 45-degree angle, screw in until the cartridge is tight and not leaking. If you hear gas leaking immediately tighten the Drinkworks™ CO<sub>2</sub> Cartridge by screwing it in until the leaking stops. It is important to get a tight seal and twist past the hiss.

**WARNING:** Drinkworks™ CO<sub>2</sub> Cartridge will get colder over time if it is leaking CO<sub>2</sub>. Do not touch cartridge with bare skin while it is leaking.

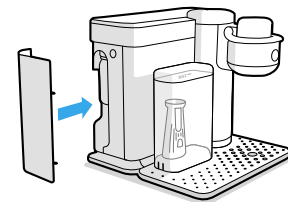
**\*NOTE:** If the receiving end on the drinkmaker is in the vertical position, pull it away from the appliance so that it is at a 45-degree angle.

**CAUTION:** SHARP NEEDLE. DO NOT PUT FINGERS INTO CHAMBER WHERE THE CARTRIDGE SCREWS IN.

2. Push down on the cartridge firmly until it locks into place. The Drinkworks™ CO<sub>2</sub> Cartridge should be completely straight (vertical) when in the correct position.
3. The drinkmaker will Display "CO<sub>2</sub> CARTRIDGE INSERTED CORRECTLY" to confirm that you are ready to make carbonated beverages.



4. Replace the CO<sub>2</sub> Side Door.
  - a. Slide the front tabs on CO<sub>2</sub> Side Door into their corresponding slots.
  - b. Pivot the CO<sub>2</sub> Side Door towards the back of the drinkmaker making sure that the front tabs stay in their corresponding slots.
  - c. Push on the door until it clicks into place.



5. Ready to make carbonated drinks!

## Tutorials & Tips

For tutorials and tips on installing the CO<sub>2</sub> Cartridge, as well as information on where and how to purchase more Drinkworks™ CO<sub>2</sub> Cartridges, refer to the Drinkworks™ App or visit the website [www.drinkworks.com](http://www.drinkworks.com).

## Disposal

The Drinkworks™ CO<sub>2</sub> Cartridge is a multi-serve single use cartridge. Do not attempt to refill or tamper with it in any way. The Drinkworks™ CO<sub>2</sub> Cartridge is recyclable when empty. As long as the cartridge has been used in the drinkmaker it will be fully empty. Please recycle.

For more information visit the website [www.drinkworks.com](http://www.drinkworks.com).



# Drinkmaker status.

The START Button light ring indicators:

## Unlit

The drinkmaker is off or in standby mode. To wake up from standby mode simply press the START Button or lift the Handle on the Pod Door.



## Solid Blue

The drinkmaker is working.



## Flashing Blue

The drinkmaker is ready to prepare a drink.



## Red

The drinkmaker needs assistance. See the Display for information.



## Flashing Red

A more serious error has occurred.

Contact Drinkworks™ support: 1-855-DRINKWORKS  
(1-855-374-6596)

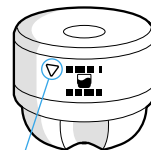


# Troubleshooting.

## My drinkmaker does not recognize my authentic Drinkworks™ Pod.

If the drinkmaker fails to recognize your authentic Drinkworks™ Pod, try opening the Pod Door and re-inserting the Pod. Make sure that the Pod is in the correct position with the barcode at the 12 o'clock position. After two failed attempts to determine what type of Drinkworks™ Pod you selected, the drinkmaker will enter an override state. Follow the instructions on the drinkmaker's Display and do the following:

1. Open the Pod Door on the drinkmaker by lifting on the Handle and remove the Pod.
2. Find the Pod type written on the Drinkworks™ Pod label. The type should be a capital letter located in a triangle under the word "Pod Type".
3. Scroll to the correct letter on the Display using the the Touch Arrow Buttons.
4. Push the START Button to select appropriate Pod Type.
5. Re-insert the Pod and close the lid.
6. Press the START Button to make your drink.



## Drinkmaker does not have power

- Check to be sure that it is plugged in securely.
- Make sure that the Power Button in back has been turned on.
- Plug drinkmaker into an independent outlet.
- Plug into a different outlet.
- Reset your home's circuit breaker, if necessary.

### **Drinkmaker will not make a non-carbonated drink**

- After placing the Drinkworks™ Pod in the Pod Basket, make sure the Pod Door is all the way down and the blue button is flashing. If the drinkmaker does not recognize the Pod, follow the steps outlined above under “My drinkmaker does not recognize my authentic Drinkworks™ Pod”.
- Check to see if the drinkmaker Display reads “FILL WATER TANK”. If so, add water to the Water Tank. Fill to, and not beyond, the MAX Fill line. Make sure the Water Tank is seated properly on its base.
- If you continue to see “FILL WATER TANK” on the Display, contact Drinkworks™ support: **1-855-DRINKWORKS (1-855-374-6596)**.

### **Drinkmaker will not make a carbonated drink**

- Follow steps above for assistance with a non-carbonated drink.
- Check to see if the drinkmaker says “CHILLING... READY IN XX MINS”. If so, the water in the internal reservoir is too warm for carbonated drinks. Please wait the time indicated on the Display and try again.
- Check to see if the drinkmaker Display reads “FILL WATER TANK”. If so, add water to the Water Tank. Fill to, and not beyond, the MAX Fill line. Make sure the Water Tank is seated properly on its base.
- If visible, press the Left Touch Arrow on the Display to determine if you need to replace your CO<sub>2</sub> Cartridge. If Display shows “REPLACE CO<sub>2</sub> CARTRIDGE”, do the following:
  - Press (do not hold) the blue CO<sub>2</sub> Gas Release Button to see if there is any gas remaining. If you get a soft hiss or if there is no gas, then please replace the CO<sub>2</sub> Cartridge with a new one. If you get a loud hiss, then proceed to the next step.
  - Confirm that the CO<sub>2</sub> Cartridge is in the correct position. Pull the CO<sub>2</sub> Cartridge away from the drinkmaker and push it back towards the drinkmaker until it is straight (vertical). The Display should confirm that the “CO<sub>2</sub> CARTRIDGE INSERTED CORRECTLY”.
- If you continue to see the same error message on the Display after troubleshooting contact Drinkworks™ support: **1-855-DRINKWORKS (1-855-374-6596)**.

### **My drinkmaker is taking a long time to cool down. What should I do?**

- To avoid long cool down times always keep your drinkmaker plugged in a powered on. This will make sure that the water in the internal reservoir stays at the perfect temperature.
- Adding ice to the Water Tank will help the internal reservoir cool down faster.
- Try running an Empty Cycle to remove warm water from the internal reservoir. Then add ice to the Water Tank to refill the internal reservoir with ice and water to cool down faster.
- If you continue to have long cool down times please contact Drinkworks™ Support: **1-855-DRINKWORKS (1-855-374-6596)**.

### **My drinkmaker just Displayed “SORRY, OUT OF CO<sub>2</sub> DRAINING WATER...” What happened?**

Your drinkmaker did not have enough CO<sub>2</sub> to make a carbonated drink. Don't worry. If the CO<sub>2</sub> runs out while the drinkmaker is preparing to make a drink, the Pod in use will be saved for the period needed to replace the CO<sub>2</sub> Cartridge. Keep a glass under the Tap as the drinkmaker will empty the unused water. When this occurs, follow the prompts on the drinkmaker's Display.

### **My drinkmaker just Displayed “CLEAN CYCLE INTERRUPTED.” What happened?**

Something happened during your Clean Cycle and you did not finish cleaning your drinkmaker. The drinkmaker will guide you through finishing the Clean Cycle process and remove any cleaning solution that is inside your drinkmaker.

For more information regarding error codes, refer to the Drinkworks™ App or visit the website [www.drinkworks.com](http://www.drinkworks.com).

# Helpful hints.

## **Plug drinkmaker directly into a grounded outlet**

If the electric circuit is overloaded with other appliances, your drinkmaker may not function properly. The drinkmaker should be operated on its own circuit, separate from other appliances.

## **Keep your drinkmaker turned “ON”**

To make your favorite drinks anytime you want, keep your drinkmaker plugged in and powered on all the time. This allows you to avoid long wait times to set up the drinkmaker and to chill water before you can prepare your favorite drink.

## **For the best tasting drinks, Drinkworks™ recommends using bottled or filtered water**

Water quality varies from place to place. If you notice an undesirable taste in your drinks (such as chlorine or other mineral tastes), we recommend you consider using bottled water or water from a filtration system. For best results, carefully follow manufacturer’s instructions when using any water filtration system.

## **Remove Drinkworks™ Pod after use**

Do not leave your Pod in your drinkmaker. Remove it after your drink has been made. Please see page 05 for drink making instructions.

## **Add ice to the Water Tank**

To get your drinks to the right temperature faster or to make a lot of cold drinks with less waiting, start with ice cold water in the Water Tank.

## **Clean the Pod Basket weekly**

Remove the Pod Basket and hand wash it or clean it in the top rack of the dishwasher.

## **Run a Clean Cycle once a month**

Your drinkmaker’s Display will let you know when it is time to run a cleaning cycle.

## **Tilt your glass when you pour a beer**

To achieve the desired combination of foam and liquid, start with a chilled glass and give it a quick rinse. Tilt the glass under the Tap and gradually straighten it to an upright position when pouring a beer. This may take a little practice to achieve the desired combination of foam and liquid.

# Home Bar Warranty.

Drinkworks™ drinkmaker will be free of defects in materials or workmanship under normal home use for one (1) year from the date of purchase. We recommend that you register your drinkmaker by visiting [www.drinkworks.com/register](http://www.drinkworks.com/register), downloading and syncing the Drinkworks™ App for Apple iOS, or Google Android, or calling toll-free

## **1-855-DRINKWORKS (1-855 374-6596)**

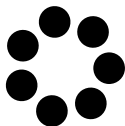
so that your purchase information will be stored in our system. Drinkworks will, at its option, repair or replace a defective drinkmaker without charge upon its receipt of proof of the date of purchase. If we opt to replace your drinkmaker to service this warranty, the replacement brewer may be new or reconditioned. If you receive a replacement drinkmaker, your existing warranty end date will be applied to the replacement. This warranty only applies to drinkmakers operated in the United States and Canada. This warranty gives you specific legal rights, and you may also have other rights that vary from state to state and, in the case of Canada, from province to province.

We can only guarantee the proper functioning and lifetime of your drinkmaker if you use Drinkworks Pods and Drinkworks Accessories.

Any damage to or malfunction of your drinkmaker resulting from the use of non-Drinkworks Pods or Accessories may not be covered by this warranty or may result in a service fee if the damage or malfunction is determined to be caused by such use. For information on ongoing maintenance and how to keep your drinkmaker functioning properly please refer to your Home Bar Care Guide or visit us at [www.drinkworks.com](http://www.drinkworks.com).

Contains FCC ID: A8TBM71S2

This device complies with Part 15 of the FCC Rules. Operation is subject to the following two conditions: (1) this device may not cause harmful interference, and (2) this device must accept any interference received, including interference “that may cause undesired operation”.



**DRINKWORKS™**  
by **KEURIG**

## Contact Us.

Questions or suggestions?

Please contact us. We'd like to hear from you.

**Drinkworks™**  
**1-855-DRINKWORKS (1-855-374-6596)**  
**hello@drinkworks.com**

Follow us for updates on all things Drinkworks™



Drinkworks™ Pods, CO<sub>2</sub> Cartridges, and other available accessories are sold separately. This drinkmaker is designed to prepare alcohol beverages and is intended for use by persons 21+ years old. Please enjoy responsibly!

The Drinkworks™ name and logo are the property of Bedford Systems LLC. All third-party trademarks or logos referenced in this guide are the property of their respective owners. KEURIG® is a trademark of Keurig Green Mountain, Inc., used under license.