

INSIGNIA™



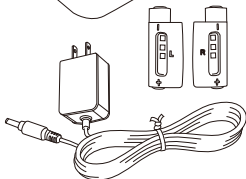
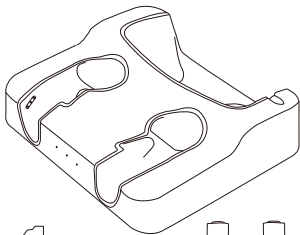
Please see www.insigniaproducts.com for the latest Quick Start Guide and troubleshooting.

QUICK SETUP GUIDE

Charging Dock for Oculus® Quest 2 NS-Q2CS

PACKAGE CONTENTS

- Charging Dock
- 2 Rechargeable Battery Packs
- 2 Custom Battery Doors
- 1 Magnetic USB-C plug
- 1 AC Adapter
- Quick Setup Guide



Before using your new product, please read these instructions to prevent any damage.

FEATURES

- Charges 2 Oculus touch controllers and headset simultaneously
- 1200mAh batteries extend your game time
- Stylish stand holds and displays your touch controllers and headset
- Rechargeable batteries eliminate costly disposable batteries
- LED lights display charging status
- Automatic shut off after controllers and headset are fully charged
- Powered by AC adapter
- Fully UL-certified battery cell

SAFETY INFORMATION

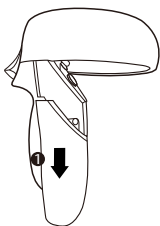
Incorrect battery use may result in battery leakage, overheating, or explosion.

When using batteries, make sure that you follow these instructions:

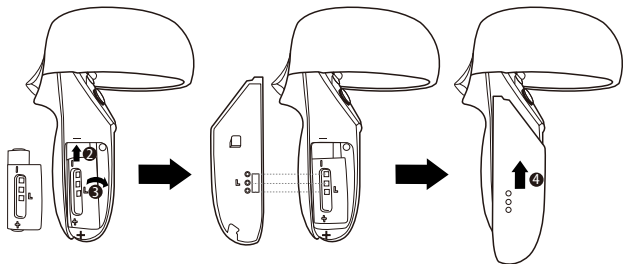
- Keep batteries out of the reach of children.
- Do not heat, open, puncture, mutilate, or dispose of batteries in fire.
- If a battery leaks, remove the battery, taking care to keep the leaked fluid from touching your skin or clothes. If fluid from the battery comes into contact with skin or clothes, flush skin with water or remove the clothing immediately. Before inserting a new battery, thoroughly clean the controller with a damp paper towel.
- Do not allow metal objects to touch the battery terminals, because they can become hot and cause burns. For example, do not carry the battery in a pocket with keys or coins.
- Remove the battery when the controller will not be used for an extended period of time.

INSTALLING THE BATTERY PACKS

1. Remove the original battery door from controllers.



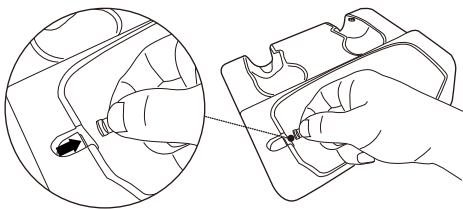
2. Install the rechargeable battery pack making sure you have it aligned with the correct polarity. Slide the custom battery door onto the controller.



3. Place the Touch controllers into the charging dock.

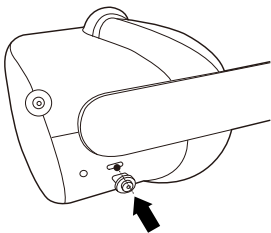
USING THE CHARGING DOCK

1. Separate the magnetic USB-C plug from the magnetic output connector of the charging dock.

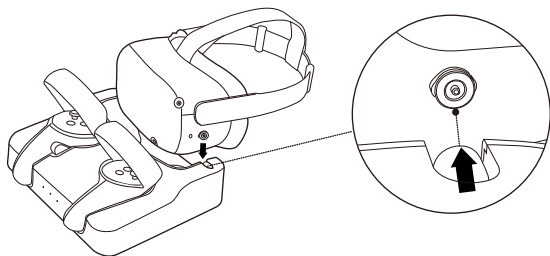


2. Insert the magnetic USB-C plug into the USB-C charging port of your headset.

Note: The magnetic USB-C plug is small and easy to lose. We recommend that you keep the magnetic USB-C plugged into the headset.

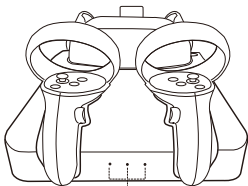


3. Place your headset into the charging dock and make sure that the magnetic USB-C plug adheres to the magnetic output connector.



4. Plug the AC adapter into a power outlet, then connect the AC power adapter to the jack on the back of the charging dock.

>>> The power LED indicators will turn on.



Left: Left Controller / Middle: Headset / Right: Right Controller

STATUS LED	DESCRIPTION
Amber	Charging in process
Blue	Fully charged

SPECIFICATIONS

Battery capacity	1200mAh
Battery type	Ni-MH LSD battery
Cable Length	4 ft. (1.2 m)
Input	DC 5V 3A
Output	
Headset	5V 2.1A Max
Touch controllers	1.5V 500mA Max x 2
Dimensions	
Charging Dock	7.5 x 8.7 x 2.3 in. (19 x 22 x 5.9 cm)
Rechargeable Battery Pack	1.97 x 0.78 x 0.98 in. (5 x 1.98 x 2.5 cm)

TROUBLESHOOTING

Charging dock doesn't charge

- Make sure that the magnetic USB-C plug adheres to the magnetic output connector.
- Make sure that each rechargeable battery is correctly installed in the Touch controller.
- Make sure that the custom battery door is correctly installed on the Touch controller.
- Made sure that you have connected the AC power adapter to the charging dock and a working power outlet.

Battery life seems short

- Make sure that the battery is fully charged before disconnecting from the charging dock.
- Leaving your fully charged controller on the charging station for extended periods of time will limit your battery's lifespan and performance.

LEGAL NOTICES

FCC Information

This device complies with part 15 of the FCC Rules. Operation is subject to the following two conditions: (1) This device may not cause harmful interference, and (2) this device must accept any interference received, including interference that may cause undesired operation.

Warning: Changes or modifications to this unit not expressly approved by the party responsible for compliance could void the user's authority to operate the equipment.

Note: This equipment has been tested and found to comply with the limits for a Class B digital device, pursuant to Part 15 of the FCC Rules. These limits are designed to provide reasonable protection against harmful interference in a residential installation. This equipment generates, uses and can radiate radio frequency energy and, if not installed and used in accordance with the instructions, may cause harmful interference to radio communications.

However, there is no guarantee that interference will not occur in a particular installation. If this equipment does cause harmful interference to radio or television reception, which can be determined by turning the equipment off and on, the user is encouraged to try to correct the interference by one or more of the following measures:

- Increase the separation between the equipment and receiver. Reorient or relocate the receiving antenna.
- Increase the separation between the equipment and receiver.
- Connect the equipment into an outlet on a circuit different from that to which the receiver is connected.
- Consult the dealer or an experienced radio/TV technician for help.

ICES-003 Statement

This Class B digital apparatus complies with Canadian ICES-003.

ONE-YEAR LIMITED WARRANTY

Visit www.insigniaproducts.com for details.

CONTACT INSIGNIA:

For customer service, call 1-877-467-4289 (U.S. and Canada)
www.insigniaproducts.com

This product is not sponsored or approved by Facebook.

INSIGNIA is a trademark of Best Buy and its affiliated companies.

Distributed by Best Buy Purchasing, LLC 7601 Penn Ave South, Richfield,
MN 55423 U.S.A. ©2021 Best Buy. All rights reserved.

Made in China

ENGLISH V3-21-1023