



Photolemur 3 for Mac

User Guide

Table of Contents

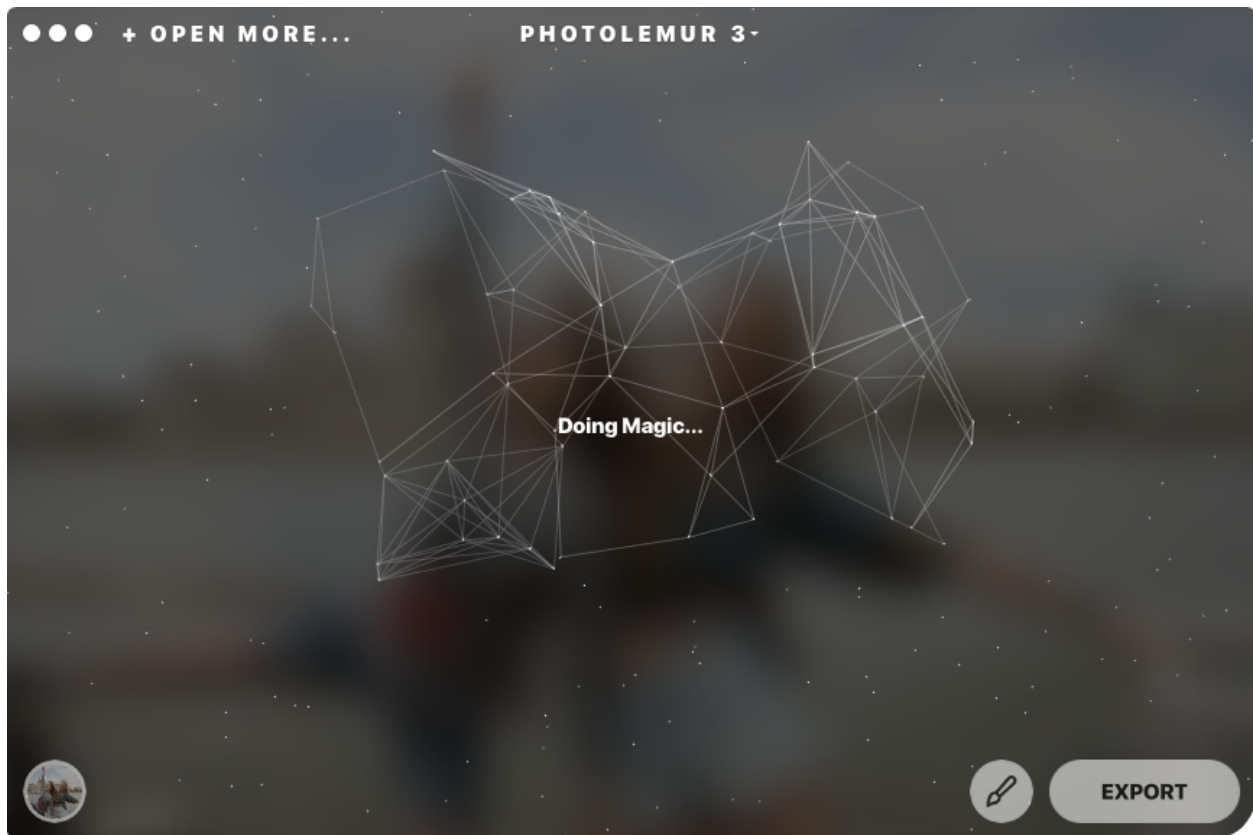
Chapter 1: Photolemur basics	4
What is Photolemur?	5
What's new in Photolemur 3?	6
System requirements	7
Image files that Photolemur handles	7
Checking for new versions of Photolemur	8
What is the free version of Photolemur?	9
Technologies inside Photolemur	9
Chapter 2: Installing Photolemur	12
How to download and install Photolemur	13
Activating Photolemur license	14
Chapter 3: Using Photolemur as a standalone app	18
Importing photos to Photolemur	19
Processing a single image in Photolemur	20
Batch processing	21
Using Face enhancement and Eyes enlargement	24
Using Styles	25
Exporting photos in Photolemur	29
Photolemur export: advanced settings	33
Automatic lens correction	37
Chapter 4: Using Photolemur as a Photos extension	39
Chapter 5: Using Photolemur as a plugin	45
How to install Photolemur plugins	46
How to use the Photolemur plugin in Photoshop	47
How to use the Photolemur plugin in Lightroom	49

Chapter 1

Photolemur basics

What is Photolemur?

Photolemur is an easy-to-use application for editing your photos. It automatically analyzes and perfects your images and doesn't require any manual input from you.



Photolemur doesn't have any hard-coded filters. Instead, it applies specific targeted enhancements to every pixel and object in your photo. Photolemur is powered by an Artificial Intelligence algorithm that recognizes objects, faces, trees, sky, foliage, and more. It distinguishes between portraits, landscapes, and macro photographs and applies the appropriate enhancements for each type of image.

Photolemur corrects camera flaws and imperfections to make your photos even better.

All you have to do is drag and drop your image to the app, and let Photolemur work its magic.

The full version of Photolemur supports:

- Batch processing
- Setting the intensity of Photolemur adjustments with the Boost slider
- Photolemur plugins for Photoshop and Lightroom
- Using Photolemur as a Photos extension
- Saving enhanced photos to your computer in a desired format and quality
- Exporting enhanced photos to Facebook, Twitter, Flickr, Snapheal, and SmugMug

What's new in Photolemur 3?

Facial Retouch and Eye Enlarger

The new Facial Retouch tool can be used to improve the look of skin and teeth and remove eye circles and wrinkles. Photolemur 3.0 also has an Eye Enlarger tool that can recognize and enlarge eyes.

Photolemur Styles

Styles are presets that improve the look and feel of your images.

Export

You can now export directly to SmugMug.

Apply Settings to All Images

It's now possible to apply Boost, Styles, and Facial Retouch to a batch of images.

System requirements

- macOS 10.11 (El Capitan), 10.12 (Sierra), 10.13 (High Sierra)
- Mac from early 2010 or later
- Intel 64-bit Core 2 Duo processor or better
- 2 GB of RAM (8 GB recommended)
- 1024x768 display (minimum)
- 4 GB of available hard disk space, SSD for best performance
- 1 GB of video RAM (VRAM)
- Internet connection and registration are necessary for required software activation, validation of subscriptions, and access to online services.

To check your system information, click on the Apple logo and choose **About This Mac**.

Image files that Photolemur handles

Photolemur opens images that meet the following requirements:

- At least 800x600 pixels
- RAW, JPEG, TIFF, or PNG file type

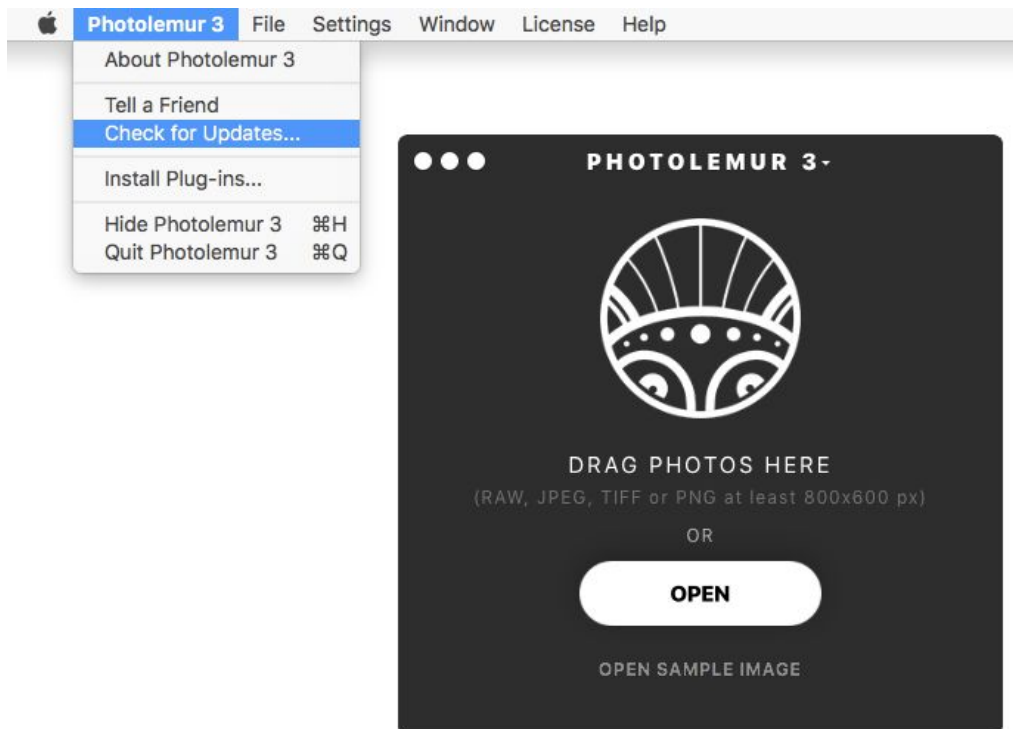
Checking for new versions of Photolemur

Note

Photolemur 3.0 is a paid upgrade. In order to upgrade from a previous version, you need to reinstall Photolemur completely. The techniques mentioned below won't apply if you're upgrading from Photolemur 2.x to Photolemur 3.x.

From time to time, Photolemur releases new versions of the app. If you're connected to the internet while using Photolemur, you'll be notified when there's a newer version available. It's a good idea to have the latest version of the software installed on your computer.

To check for a new version of Photolemur manually, go to **Photolemur > Check for Updates**.



Note

If you downloaded Photolemur from the App Store or Setapp, this option will be unavailable. You'll get all updates through the App Store or Setapp.

To check your current version, launch Photolemur, click on Photolemur in the top menu next to the Apple logo, and select **About Photolemur**.

What is the free version of Photolemur?

The free version of Photolemur can be downloaded on the [Photolemur website](#). It can be used for an unlimited period of time with the following limitations:

- No batch processing
- No plugins
- Photolemur watermark added to processed images
- 1200px maximum long-edge size for exported photos

Technologies inside Photolemur

While it's simple on the outside, Photolemur is extremely complicated on the inside. Its engine uses 12 different technologies to make your images look great.

- Color Recovery

Automatic Color Recovery technology makes sure your photos retain the bright, vivid colors of real life. It instantly adjusts colors to pop beautifully on the screen.

- JPEG Fix

JPEG Fix finds and corrects mistakes in JPEG images by suppressing compression artifacts to quickly improve the quality of images.

- Foliage Enhancement

Foliage Enhancement automatically picks out individual trees, leaves, and any other kind of plant or shrub and adjusts colors, sharpness, and other settings to bring the stunning natural beauty back to your image.

- Auto Color Temperature

This technology automatically adjusts the colors of objects to match their colors in real life.

- Auto Lens Correction

Distortion usually appears in images taken with wide lenses, causing objects to look different in size and shape from how they look in real life. Photolemur's Auto Lens Correction automatically fixes distortion as well as chromatic aberration and vignetting to make your images look natural.

- Smart Dehaze

Smart Dehaze automatically detects and removes unnatural haze, fog, mist, dust, smog, or distracting unpleasantness in order to enhance the colors and overall beauty of your photos.

- RAW Processing

With support for the RAW format and the rest of Photolemur's technologies, you won't need to worry about how to improve photo quality ever again.

- Sky Enhancement

Sky Enhancement brings head-turning, striking colors back to your skies, giving the whites of the clouds a lift and enhancing the blues.

- Exposure Compensation

Photolemur provides automatic Exposure Compensation, making dark images brighter and overexposed images darker. This technology automatically detects and compensates for inaccurate exposure settings. Exposure compensation fixes issues with exposure by slightly lightening or darkening images to make up for inconsistencies.

- Natural Light Correction

Natural Light Correction technology keeps the appropriate warm or cool tones to best represent the time of day. Photolemur Daylight Correction takes into account the time of day in your photos and adjusts tones, exposure, and contrast to bring out the natural colors and lighting of your real-life moments.

- Noise Reduction

Noise Reduction automatically finds and removes unwanted digital noise that's most often created by slow shutter speeds in low light situations.

- Tint Perfection

Tint Perfection automatically analyzes your photos to find the best tint — whether warmer or cooler — depending on several variables.

- Face Retouching

Photolemur's Face Enhancement detects faces in your photos, regardless of the number, then removes any imperfections and blemishes, and it does all that automatically with pleasing, natural-looking results. You'll never get better and more effortless skin retouching, whether it's for portraits, groups shots, or selfies.

Chapter 2

Installing Photolemur

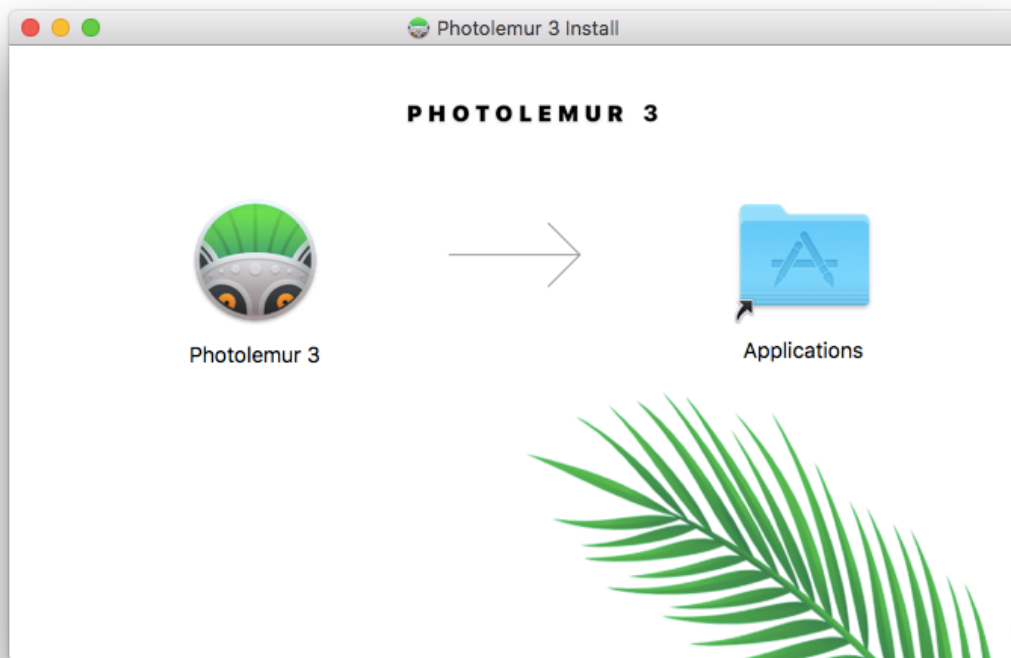
How to download and install Photolemur

You can download Photolemur using the link that you receive after purchasing a license or after registering for the free version. The installation process is the same for both versions.

Click the **Download** button in the email you've received or [click here](#). Clicking this link will initiate the download.

Double-click the **Photolemur_3.dmg** file. You'll find this file where all other files go that you download from the Internet. The default location is your **Downloads** folder.

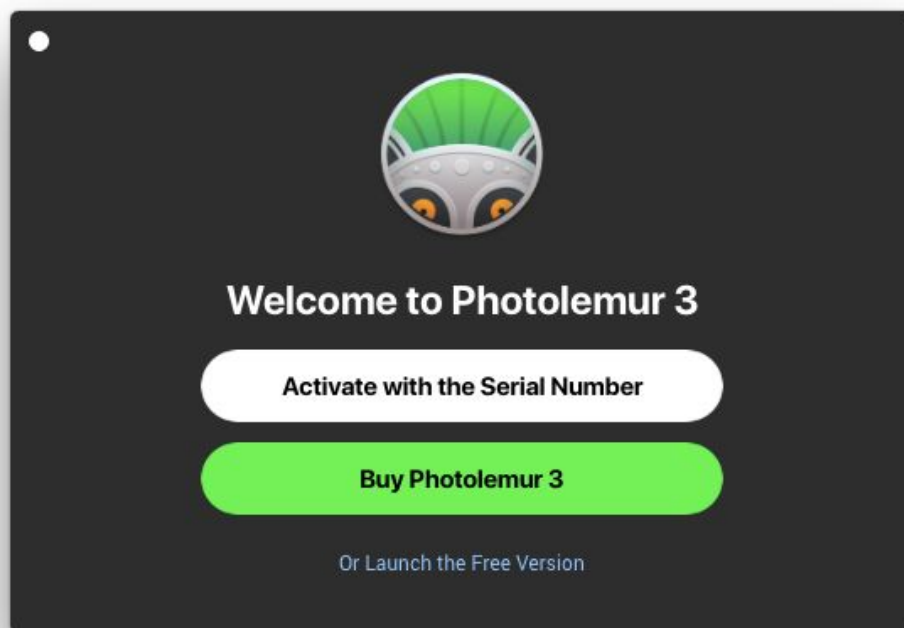
After your Mac has verified and opened the Photolemur file, drag the Photolemur app to the Applications folder in the window that has opened.



Activating Photolemur license

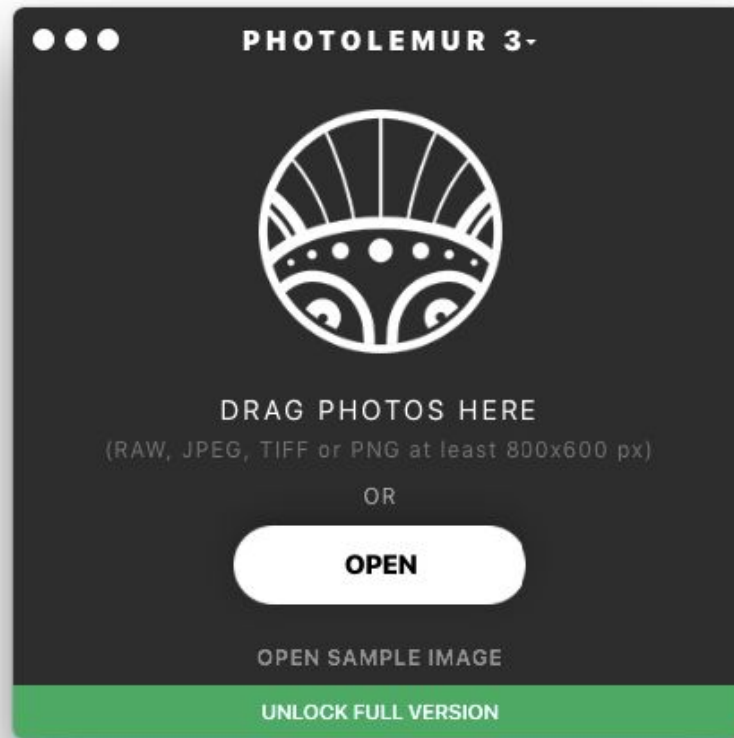
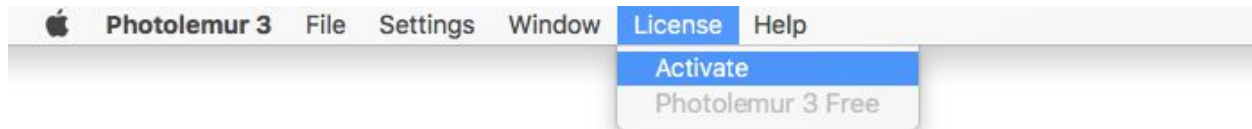
Activating the free version

If you're using the free version of Photolemur, there's no need to use any license code to activate it. The first time you open Photolemur, just click **Or launch the free version** at the bottom of the Photolemur window.



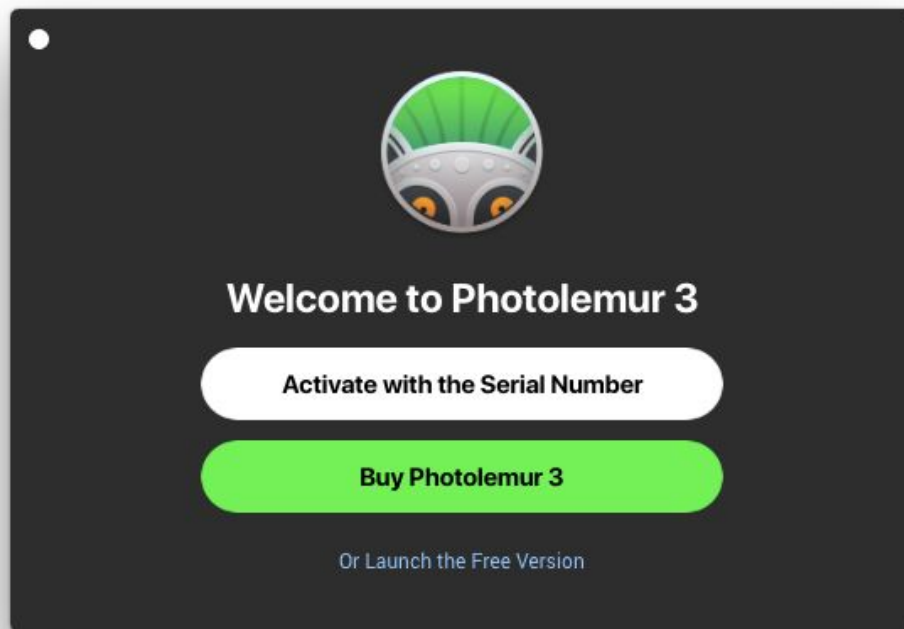
Once you do that, you can start using the free version of Photolemur.

If you're using the free version of Photolemur and want to activate it, click **License** at the top of the Photolemur menu and select **Activate**.



Activating the full version

1. The first time you open Photolemur, choose **Activate with the serial number**.



2. Enter your email address and the serial number you received by email.

Note

Make sure you enter your serial number correctly without any spaces or other invisible symbols. If you're activating Photolemur for the second time, make sure you use the same email address that you used when you activated it for the first time.

3. Click **Activate Photolemur**.

Once you do that, you can begin using Photolemur.

Note

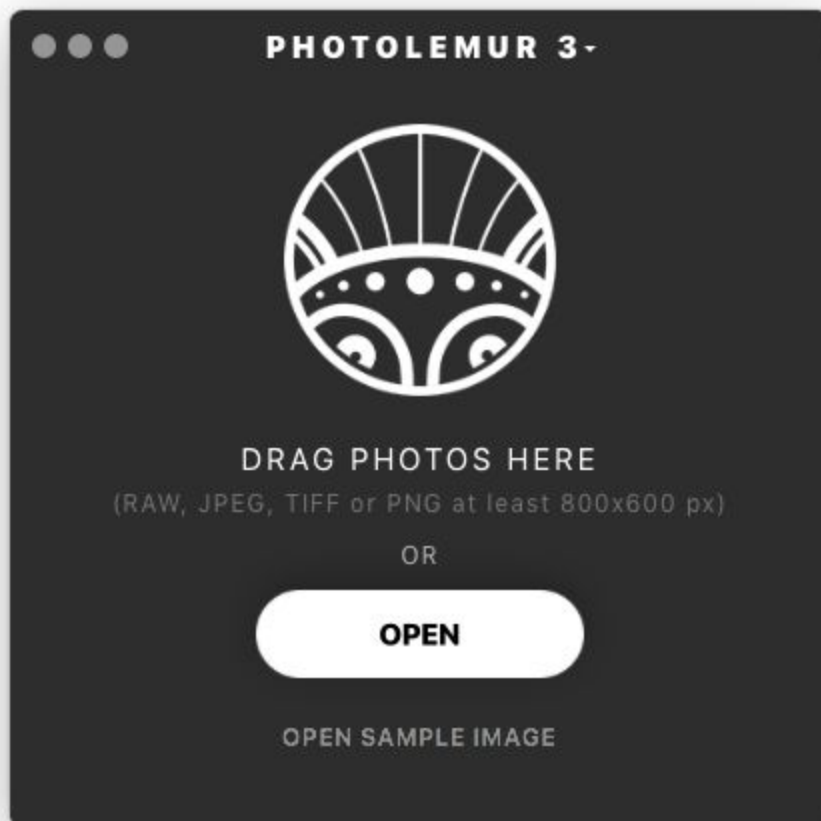
Photolemur 3 can only be activated with a serial number purchased after Photolemur 3 was released, or during the preorder. Photolemur 2.0 serial numbers won't work to activate Photolemur 3.

Chapter 3

Using Photolemur as a standalone app

Importing photos to Photolemur

To start using Photolemur, you first need to upload a photo. If you want to see how Photolemur works, you may want to open a sample image first. To do that, click on **Open Sample Image** at the bottom of the Photolemur window.



To start enhancing your own photos, either:

- Click the **Open** button in the Photolemur window, which will open a Finder window where you can select photos to upload; or

- Drag and drop an image to the Photolemur window. You can drag your photos from any Finder location (e.g. Pictures or Downloads) or from your Photos app. You can also drag and drop a whole folder with images to start batch processing.

Note

Photolemur supports RAW, JPEG, TIFF, and PNG files that are at least 800x600 px.

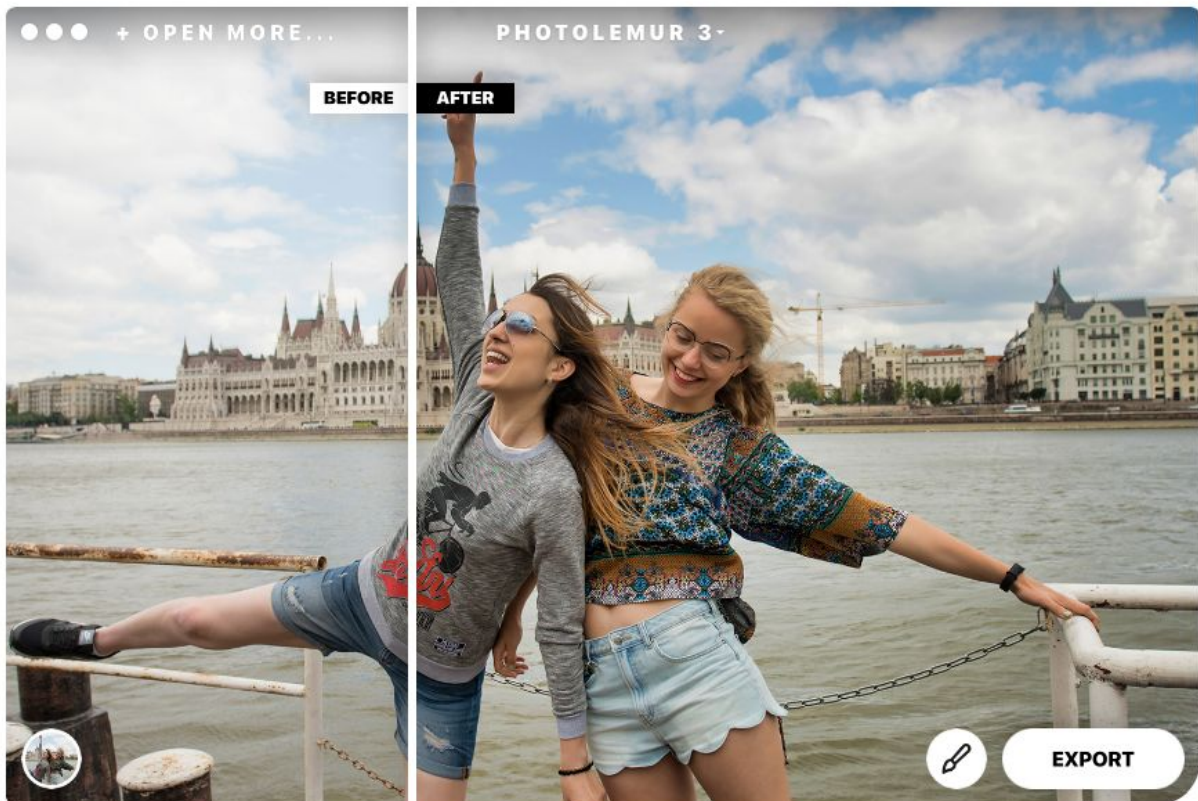
If you have a single image open in Photolemur and want to replace it with a different one, you can drag a new image to Photolemur while holding the Command (⌘) on your keyboard. This will replace the open image with the new one.

If you drag a new photo to Photolemur without holding Command (⌘), the new image will be added alongside the one that was already open and the Photolemur batch window will open.

Processing a single image in Photolemur

In the single image processing window you can see the difference between the original image and the Photolemur result using the **Before & After** slider.

You can use the **Boost slider** to change the intensity of the adjustments. To open the Boost slider, click the brush icon next to the **Export** button.



By default, the slider is set to maximum Boost. If you move it all the way to the left, you'll see your original photo.

To save the enhanced image, click **Export** and select where you want to save it.

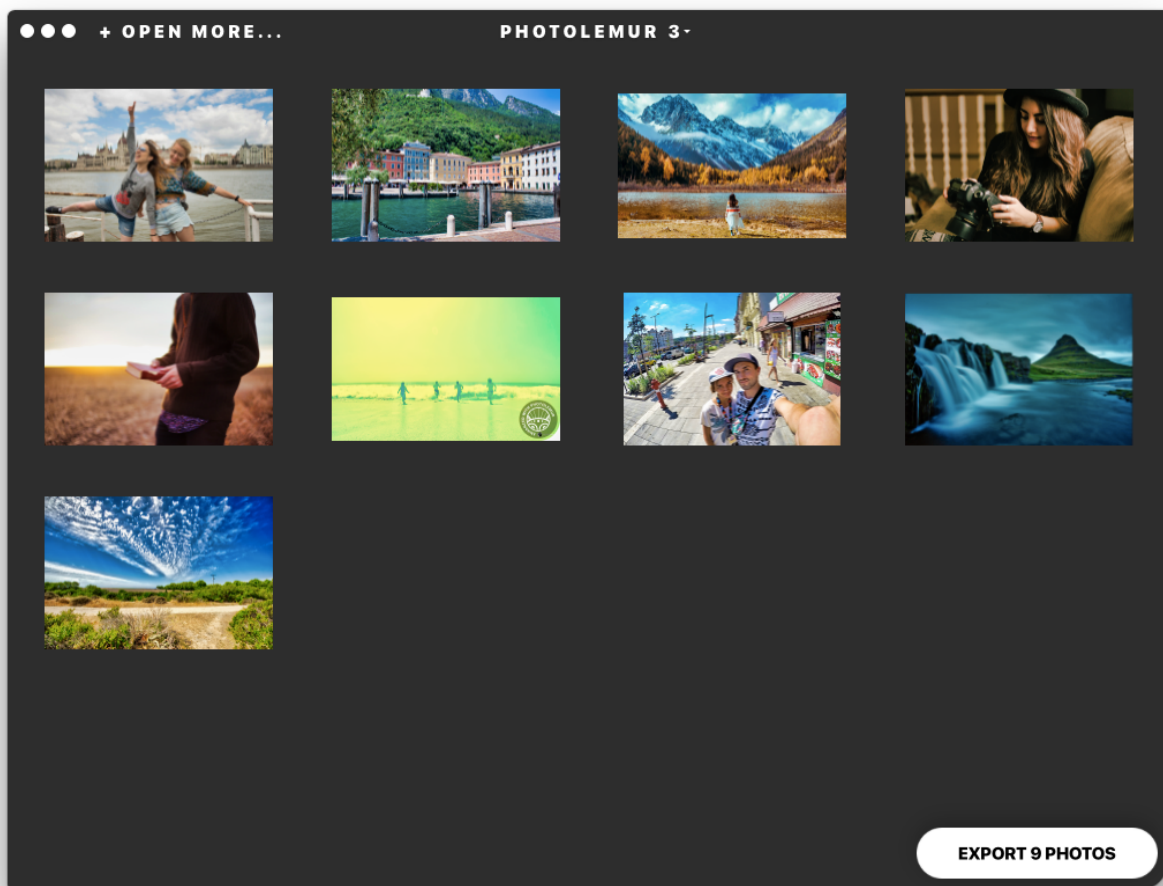
Batch processing

Batch processing in PhotoLemur allows you to process an unlimited number of photos at the same time. You can upload your photos to PhotoLemur in the following ways:

- Click the **Open** button in the PhotoLemur window, which will open a Finder window where you can select photos to upload

- Drag and drop images to the Photolemur window. You can drag your photos from any Finder location (e.g. Pictures or Downloads) or from your Photos app
- Drag and drop a whole folder with images to start batch processing

After you upload photos, you'll see their thumbnails in the Photolemur gallery.

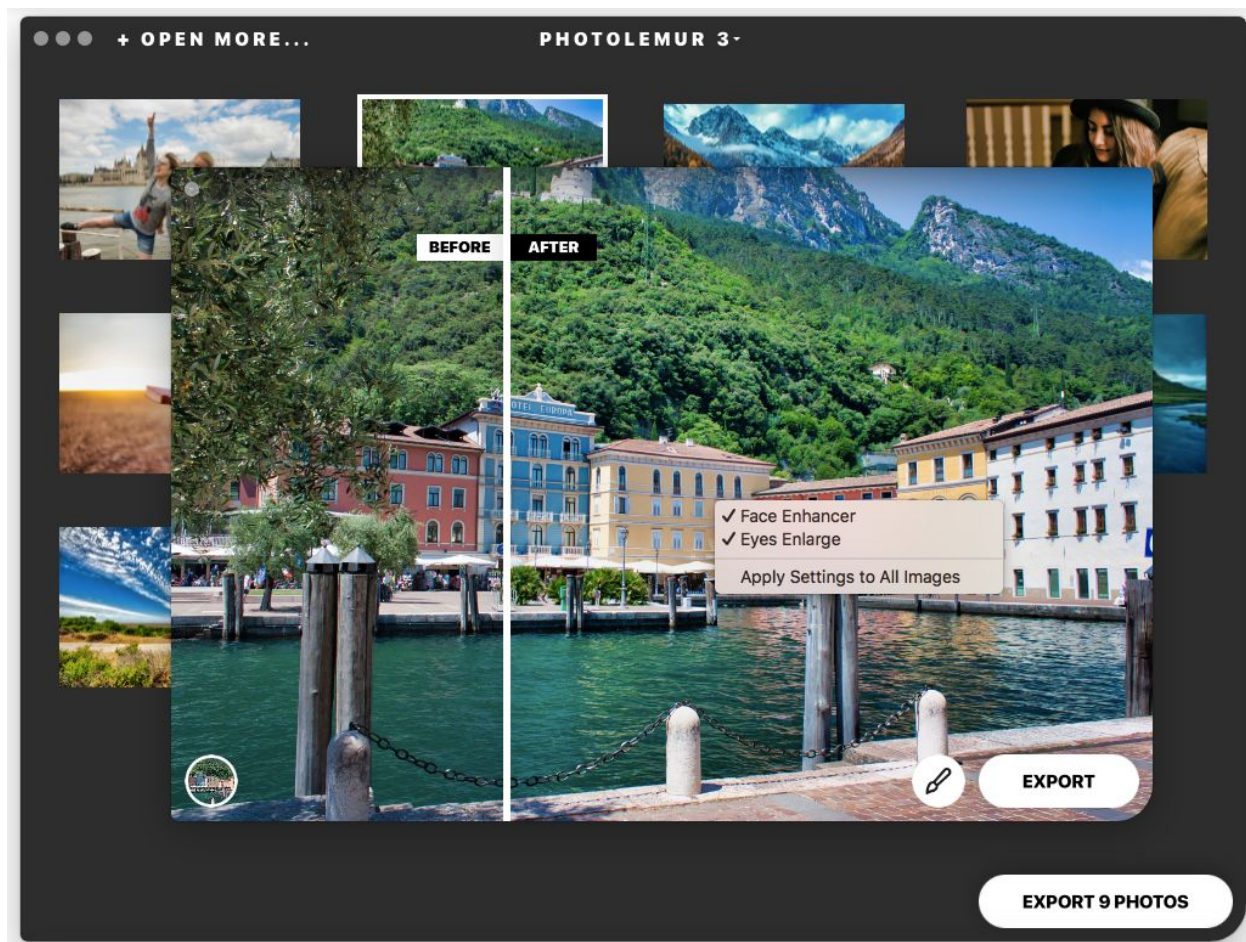


To process all of them with the default Boost slider setting, simply click on **Export # photos** and choose your export preferences. All the adjustments will be applied on export.

If you've uploaded several photos to the Photolemur gallery and you want to change the Boost setting for some of them, you need to open those photos one by one to adjust the Boost slider.

Once you've changed the intensity of the adjustments for an image, you can close that image window and go back to the Photolemur gallery. Photolemur will remember the Boost setting for each individual image.

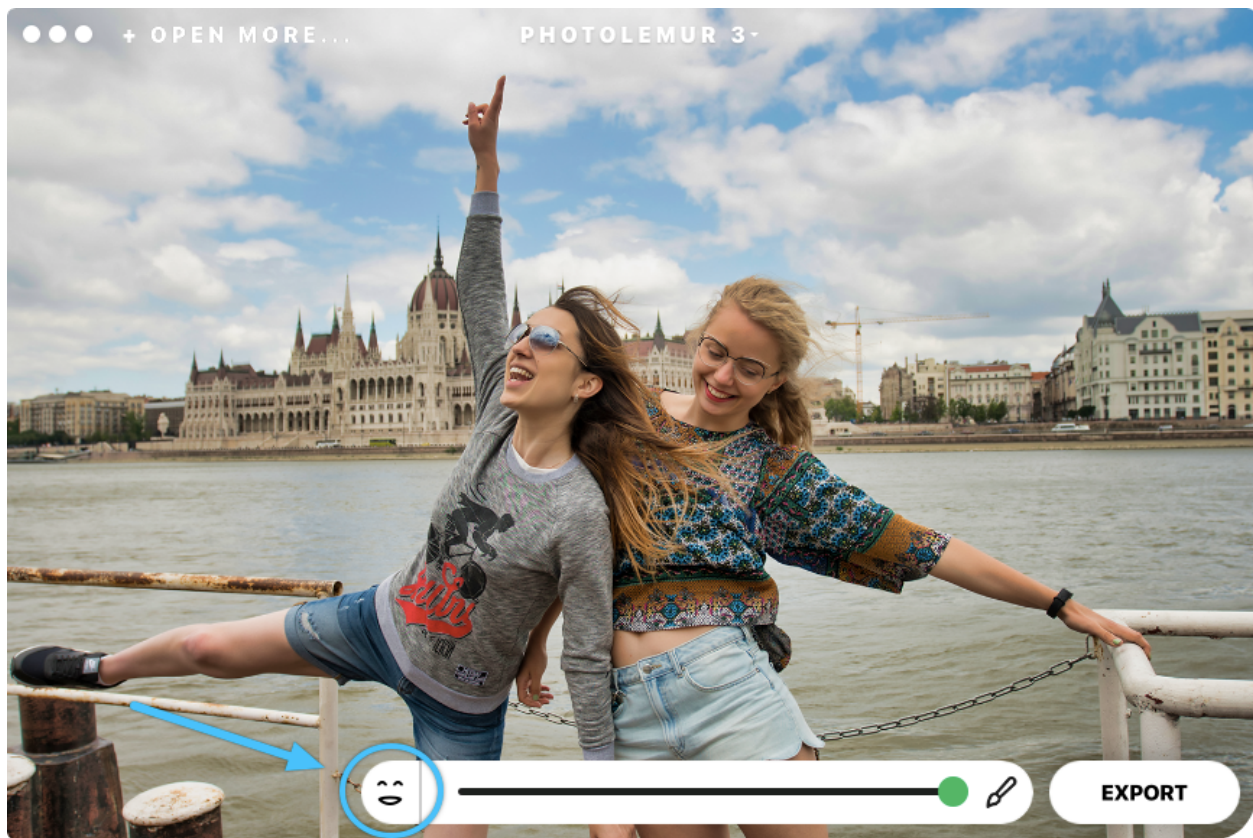
If you find your favorite settings and want to apply them to all images, just right-click anywhere in the Photolemur window and simply select **Apply settings to all images**. This option is only available during batch processing on the image selection screen.



If you're done with the Boost slider, click on **Export # photos** and choose your export preferences. All the adjustments will be applied on export.

Using Face enhancement and Eyes enlargement

To enable face enhancement, just click on the Boost slider and then click on the face icon to the left.



After you've enabled Face Enhancement, you can also play with the Eyes Enlargement feature. To turn it on or off, simply click the Boost slider one more time and then click on the eye icon next to the face.

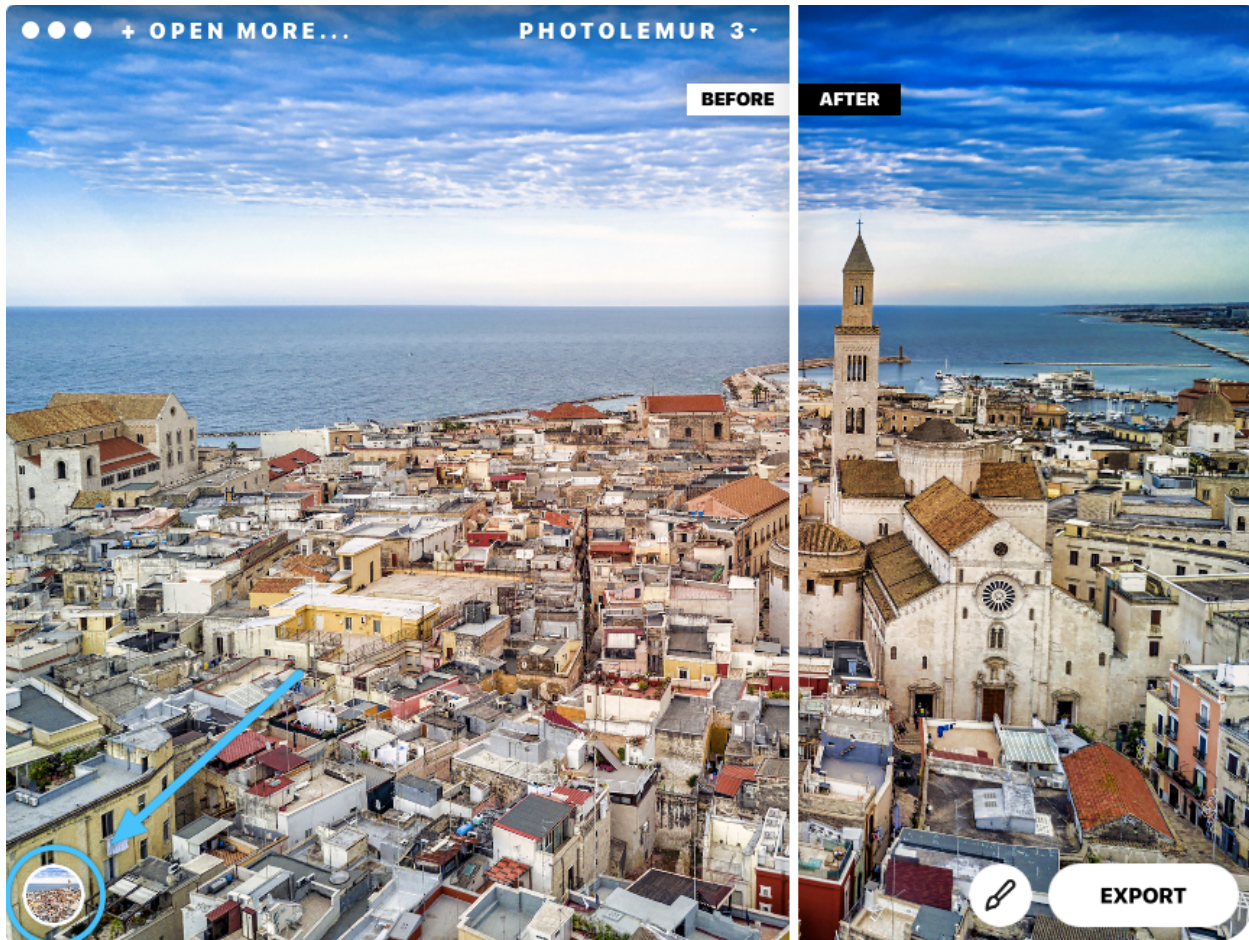


Using Styles

Styles are presets of carefully selected settings — temperature, saturation, contrast, and more — that add a thematic touch to your images. Starting with Photolemur 3.0, you can select among default styles created by the AI engine. Later, you'll be able to visit our Skylum marketplace to get more styles.

How to start using styles

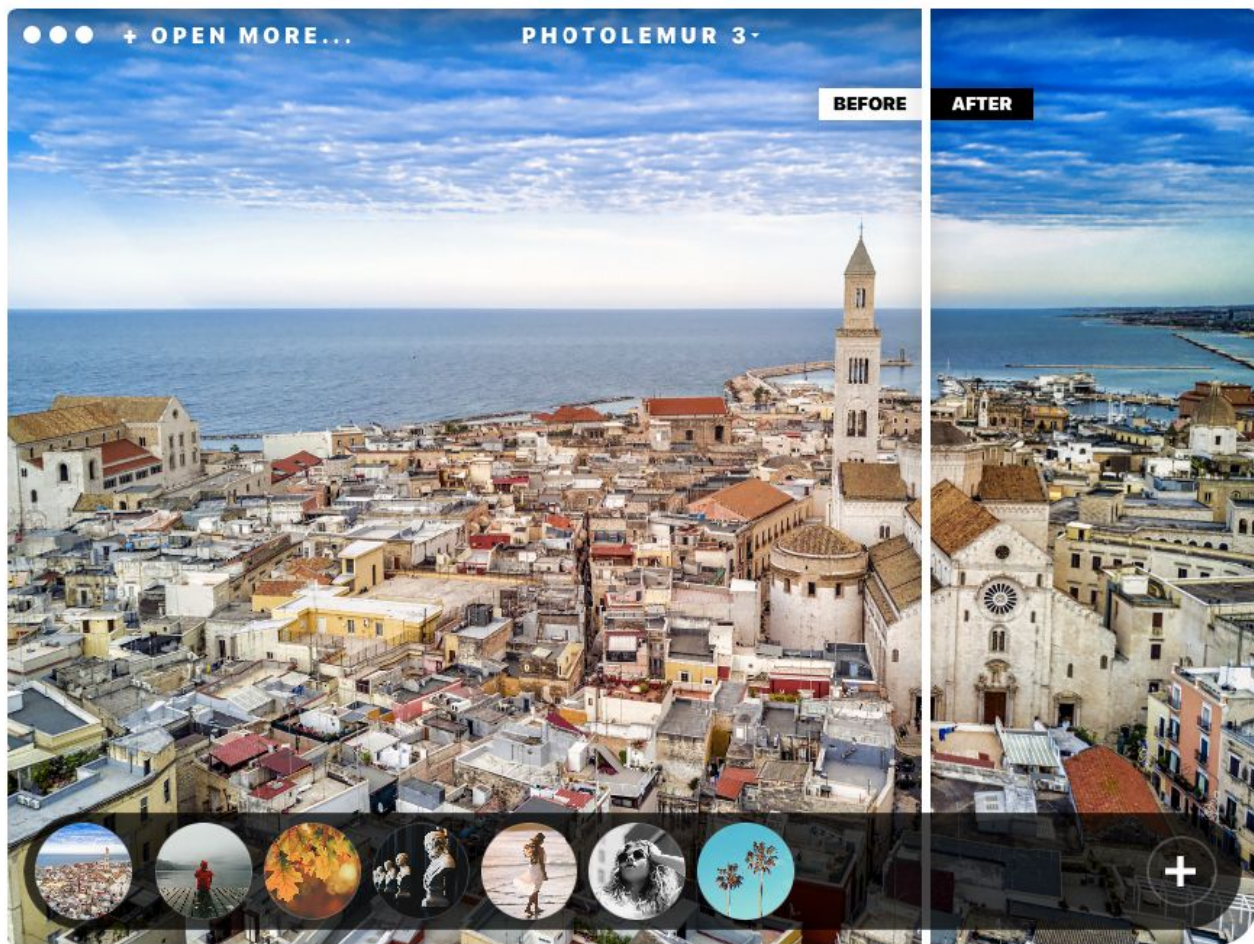
Click on Styles icon in the bottom left corner of the Photolemur window and select the style you want to apply. You can always revert back to the original look by selecting **STYLE:ORIGINAL**.



6 styles selected by AI

True to the Photolemur mindset, all built-in styles were created using artificial intelligence. At the beginning, we started with more than 200 styles and tested them on thousands of images. From there, with the help of folks who were eager to see these specific styles come to life, we narrowed our list down to six of the very best photo enhancement-worthy styles.

These six styles outperformed all others in the number of test images they were successful with, meaning that these styles themselves truly were chosen by artificial intelligence.



Apollo

Wherever you're going and whatever part of the world you're traveling to, consider Apollo your go-to style. Bring it along on your adventure next to all your best travel gear and rest assured that when you're ready to share your photos, Apollo will help to make them look beautiful.

Fall

The Fall style is perfect for revealing the pure beauty of nature. From crimson colored leaves, to yellow and green tree canopies, each Fall photo makes you feel the essence of the season and brings you into a specific moment in time. It's warm, calming, and — like all the best parts of nature — truly breathtaking.

Noble

You know those gorgeous photos of Greek marble sculptures you often see in the Vogue travel section? The kind that make you want to hop on a plane tomorrow and set off in search of the world's most ancient buildings and soul-filled architecture? We love them too. That's why we're excited to introduce the Noble style. It's elegant and fancy, perfect for architecture and aristocratic places.

Spirited

The Spirited style was created for artists, made for those who are looking to convey emotion and feeling through their images. Whether you're snapping shots of places, people, or objects, you can use this style to bring soul to your photos.

Mono

There's a certain feel to the perfect black-and-white photo. And if you agree that classic is always in trend (regardless of the time period), you'll absolutely love this style. Use it with portraits, food, places, and everything in between to achieve that wonderfully timeless look.

Evolve

Perhaps you're snapping scenic shots of the sea or getting up close and personal with all sorts of wildlife. Let Evolve be your experiment in every single way. This style was created precisely for those who want to bring their photos to an entirely new and unexpected level. If you're looking to develop your skills as an image enhancer — and progress to an editing master (in the easiest of ways), give Evolve a try.

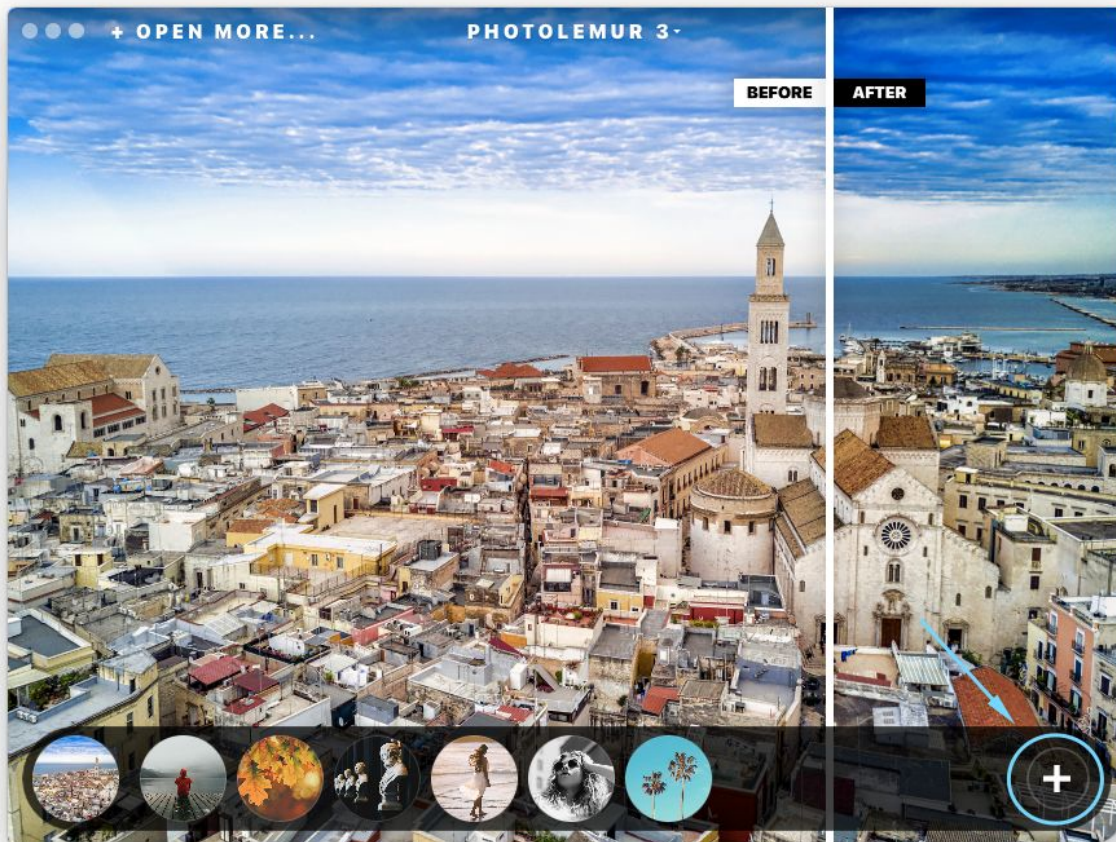
How to get more styles

Note

Adding new styles isn't available in Photolemur 3 version 1.0.0

If you want to try even more styles, click the Styles icon at the bottom left corner of the Photolemur window, then click the plus (+) icon on the right. You

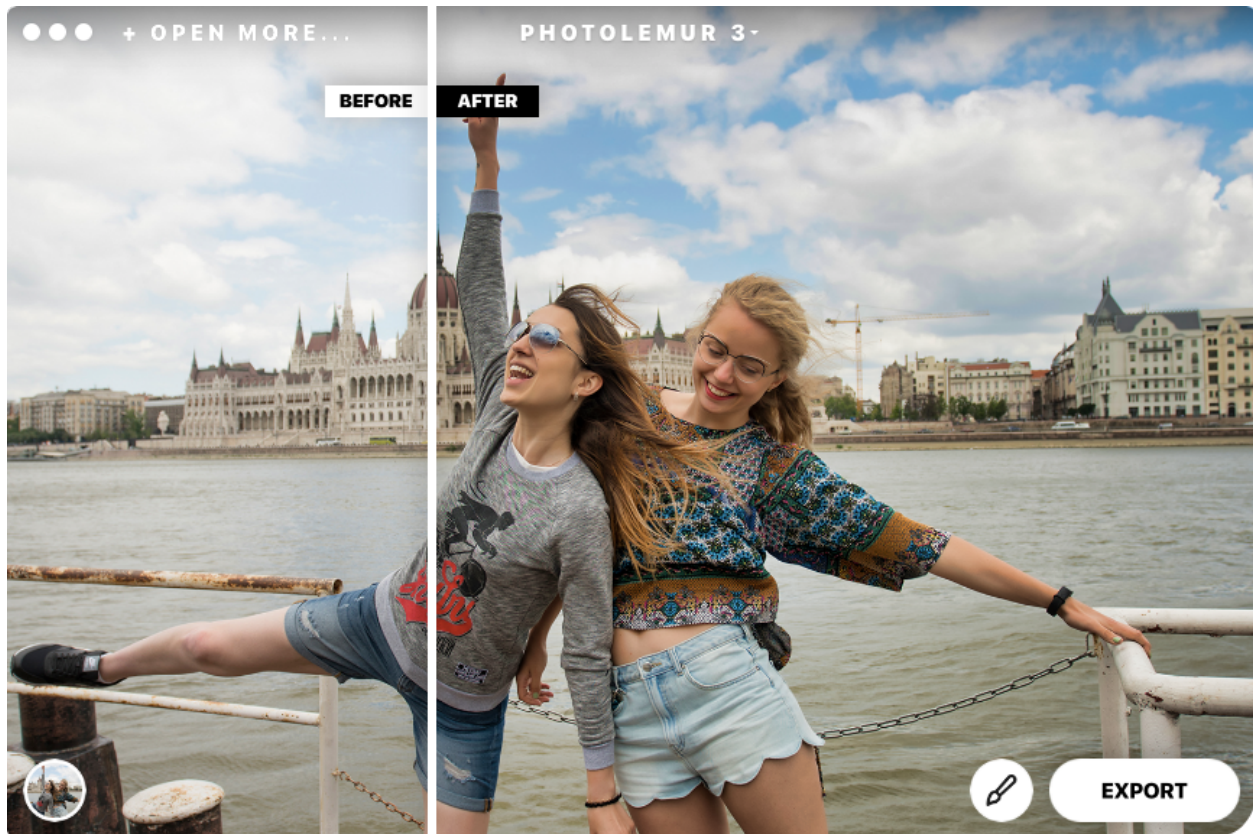
should end up at the Skylum marketplace where you can see examples of styles and purchase the most eye-catching.



Exporting photos in Photolemur

To save changes applied to your image, you need to export it. In Photolemur, there are three ways to export photos.

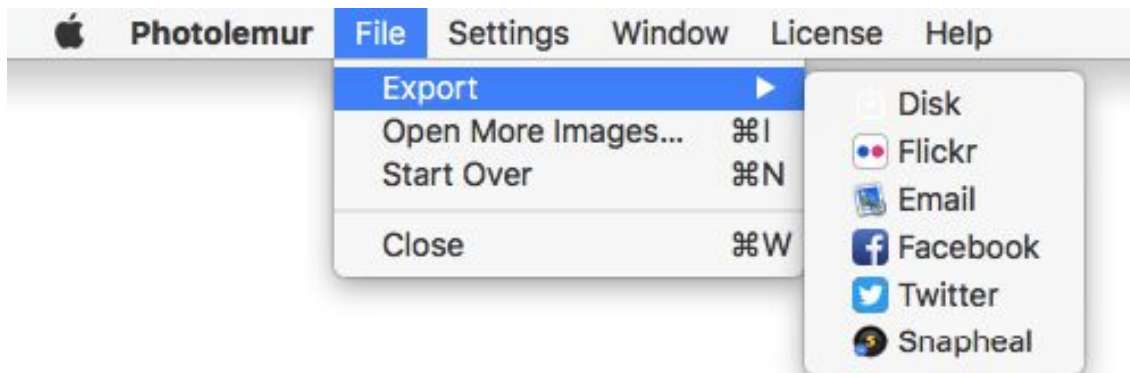
- Click the **Export** button in the bottom right-hand corner of the Photolemur window



- In the Photolemur menu at the top center of the Photolemur window, click on **Export**



- Click on **File > Export**



In Photolemur, you can export your image to Disk (your computer), Flickr, Email, Facebook, Twitter, Smugmug, or Snapheal.

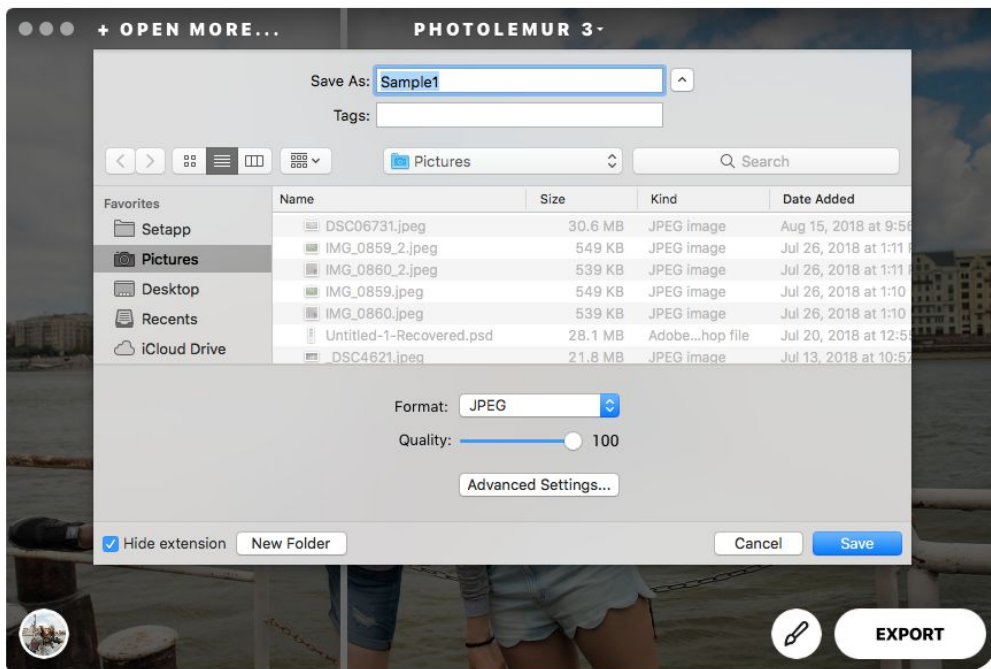
Note

Export shows services that are available in **Internet Accounts > System Preferences**.

Exporting to social media, email, or Snapheal is pretty easy, as Photolemur automatically opens the platform you've selected.

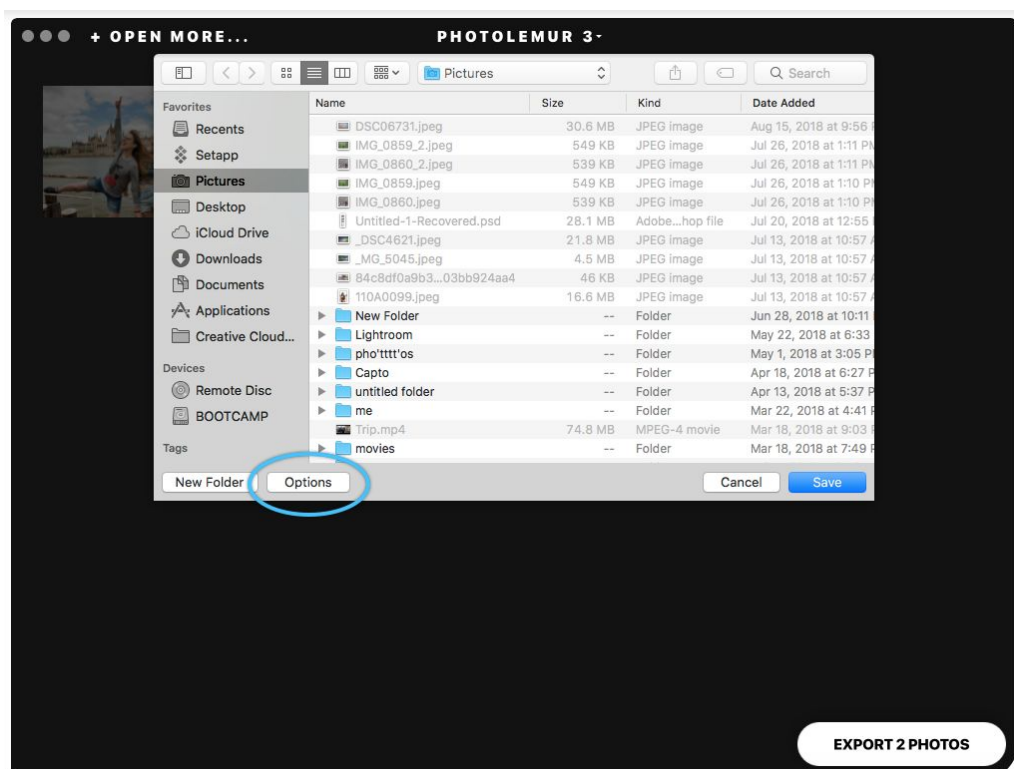
In this section, we describe the export setting, which can be chosen when you save your image(s) to your computer.

When you click on **Export > Disk**, you can select the file format, image quality, and folder where you want to save your image.



There's also an **Advanced Settings** button that opens a Photolemur window with advanced export options.

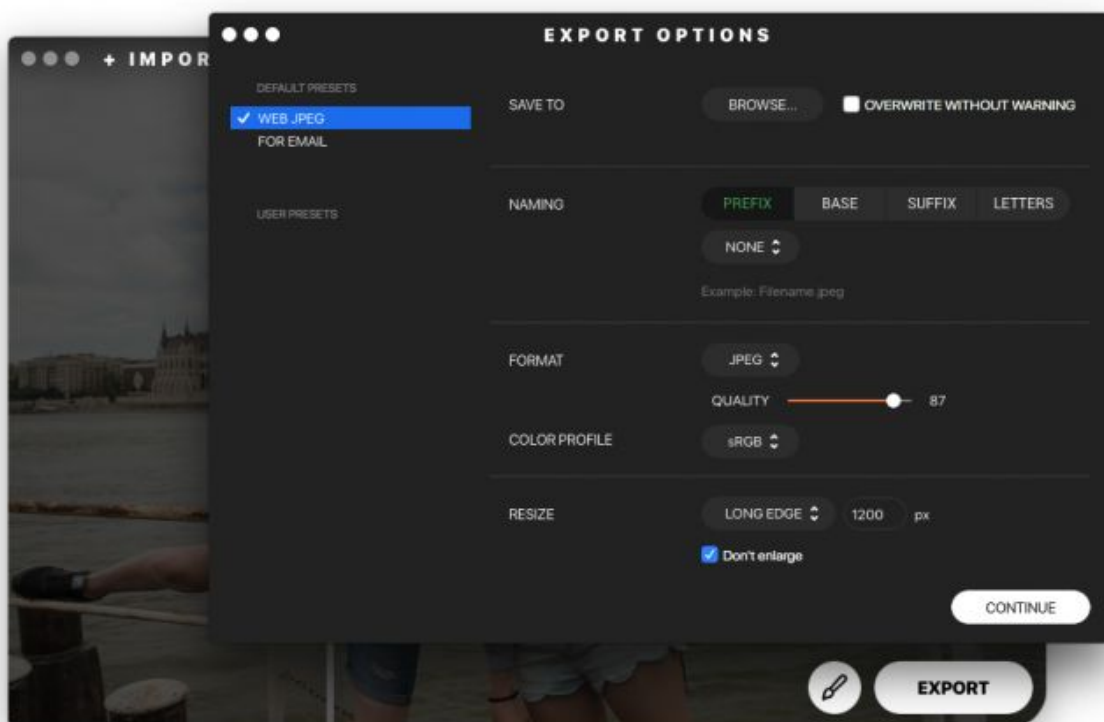
If you're exporting more than one image, you'll need to click the **Options** button to open the settings.



Photolemur export: advanced settings

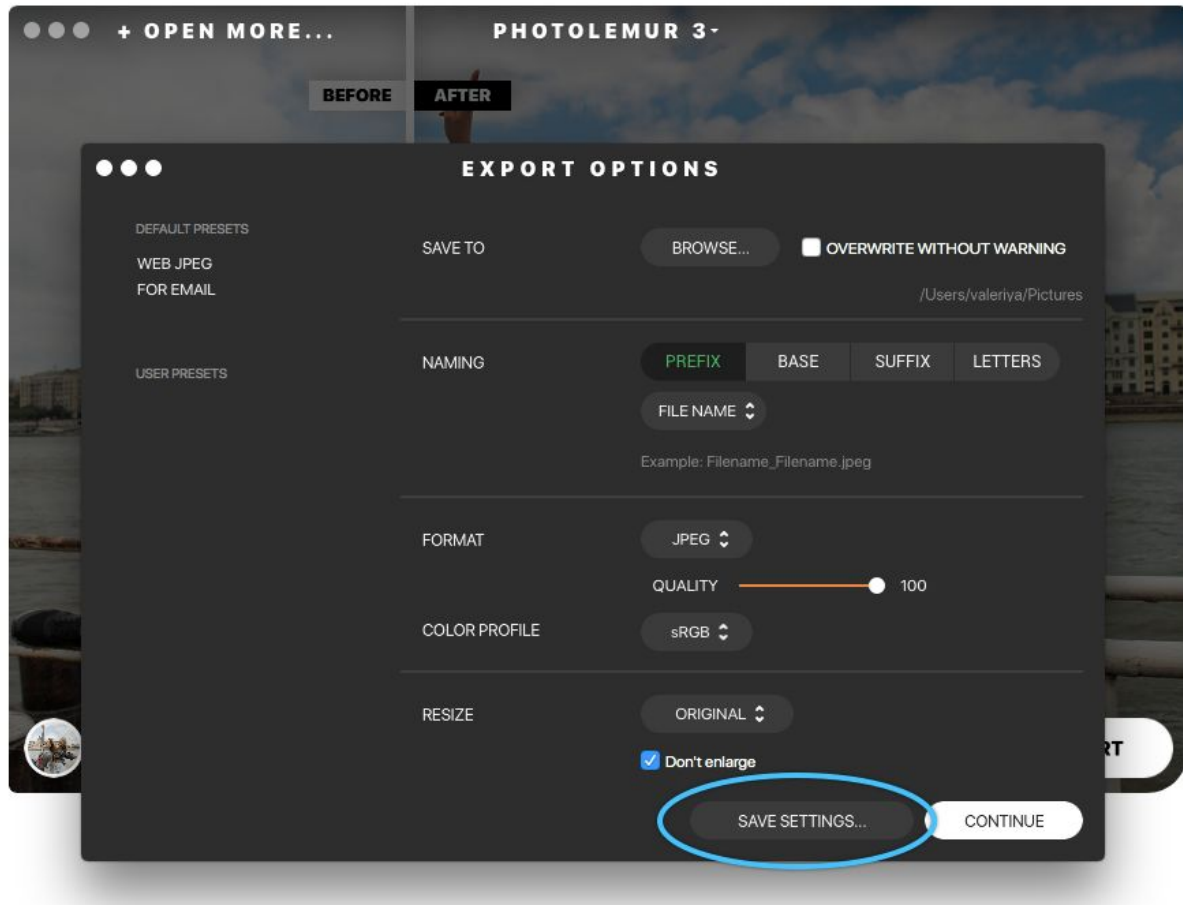
Photolemur's advanced settings allow you to choose the location where you want to save your photos, rename and resize your images, choose a file format, set the quality, and select a color profile.

All these settings can be saved as presets. The list of presets is located on the left side of the export window.



There are two default presets in Photolemur: WEB JPEG and FOR EMAIL.

If you change any of the settings in a default preset, the Save settings button will appear at the bottom of the window. If you click on it, your modified settings will be saved as a user preset.



Save to

Under the Save to section, you can select the folder where you want to save your files. If you want to overwrite your original photo without warning, put a checkmark in *Overwrite without warning* checkbox.

Note

Your original photo will be overwritten only if the exported image and original image names match.

Naming

The filename of your image can be modified in several ways. You can add a prefix or suffix to your original filename, change the base, and make the letters uppercase or lowercase.

The prefix, suffix, and base can be modified in the following ways:

- NONE

If you select this option under Prefix and Suffix, no prefix or suffix will be added to your filename. This option can't be selected under the base and is replaced by the Filename option. If you select Filename under base and None under Prefix and Suffix, your filename won't be modified.

- FILENAME

If you select FILENAME under Prefix, the prefix will be the name of the imported file. If you select FILENAME under Suffix, the suffix will be the name of the imported file.

Let's say you want to modify an image named **London.jpeg** and select **Prefix > Filename**. In this case, the exported image name will be **London_London.jpeg**. If you also select **Suffix > Filename**, the image will be saved as **London_London_London.jpeg**.

- CUSTOM TEXT

Custom text allows you to enter a name manually. If you want to modify your image name without adding any prefixes or suffixes, select **Custom Text** under **Base** and enter a new name.

- COUNTER

In the counter, enter a starting number that will be added to your images. If you're exporting more than one photo and type 4 in the counter field under

Suffix, for instance, your images will be saved as **Filename_4.jpeg**, **Filename_5.jpeg**, **Filename_6.jpeg**, and so on. If you select **Counter** under **Base**, your filename will be replaced by that number.

- **TIMESTAMP**

If you select **Timestamp** under **Prefix** or **Suffix**, the current date will be added before or after your filename. If you select **Timestamp** under **Base**, the current date will replace your original filename.

Letters contains the following options:

- Leave as it is
- Upper case
- Lower case

Format, Color Profile

In Photolemur, you can save images in the following formats:

- JPEG
- PNG
- TIFF
- JPEG-2000
- Photoshop
- PDF

The following color profiles are supported:

- sRGB

- Adobe RGB
- ProPhoto RGB

Resize

You can resize your images by setting the long edge, short edge, or absolute dimensions. Or you can maintain the original image size.

Resizing by long edge means that you can set the desired length of the longest side of your image. The shorter side will be resized proportionally.

Resizing by short edge means that you can set the desired length of the shorter side of your image. The longer side will be resized proportionally.

Dimensions allow you to enter absolute dimensions in pixels.

Automatic lens correction

Note

Automatic lens correction is only supported for RAW file formats.

Lens correction is a set of fixes for such common issues as distortion, chromatic aberration, and vignetting.

Distortion usually appears on images taken with wide lenses and causes objects to look different in size and shape from how they look in real life.

Straight lines appear curved because the field of view of the lens is much wider than the size of the image sensor.

Chromatic aberration causes objects in photos to be framed with yellow and pink lines. This happens because of light being refracted differently while passing through the lens.

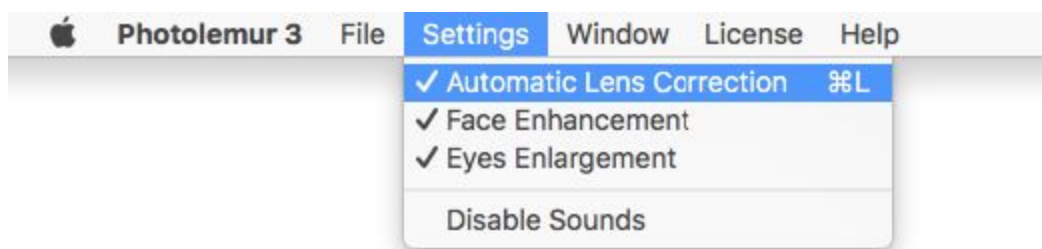
Vignetting is caused by optics and looks like black corners on an image.

Photolemur's lens correction fixes all these issues automatically.

How to enable lens correction in Photolemur

To enable lens correction, click on **File**, choose **Settings**, and click on **Auto Lens Correction**.

If it's already checked, that means it's enabled.



As soon as you upload a photo to Photolemur, lens correction will be applied.

How to disable lens correction

To disable lens correction, click on **File**, choose **Settings**, and select **Automatic Lens Correction**.

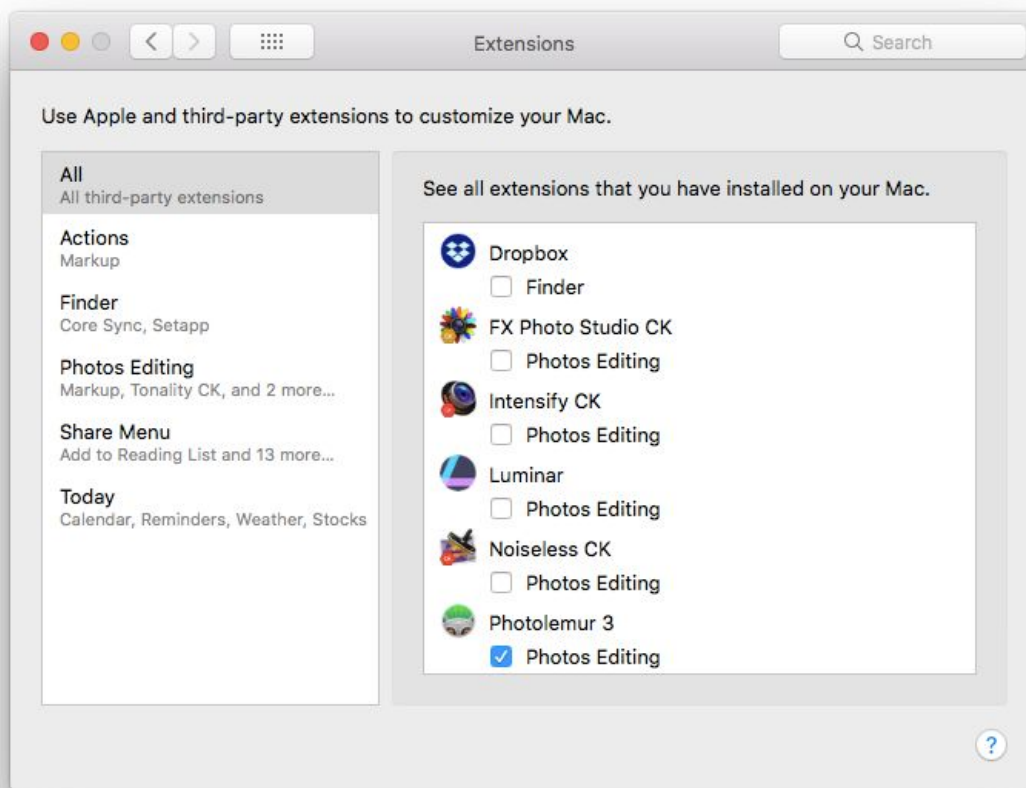
After you disable it, there will be no checkmark next to the Automatic Lens Correction option.

Chapter 4

Using Photolemur as a Photos extension

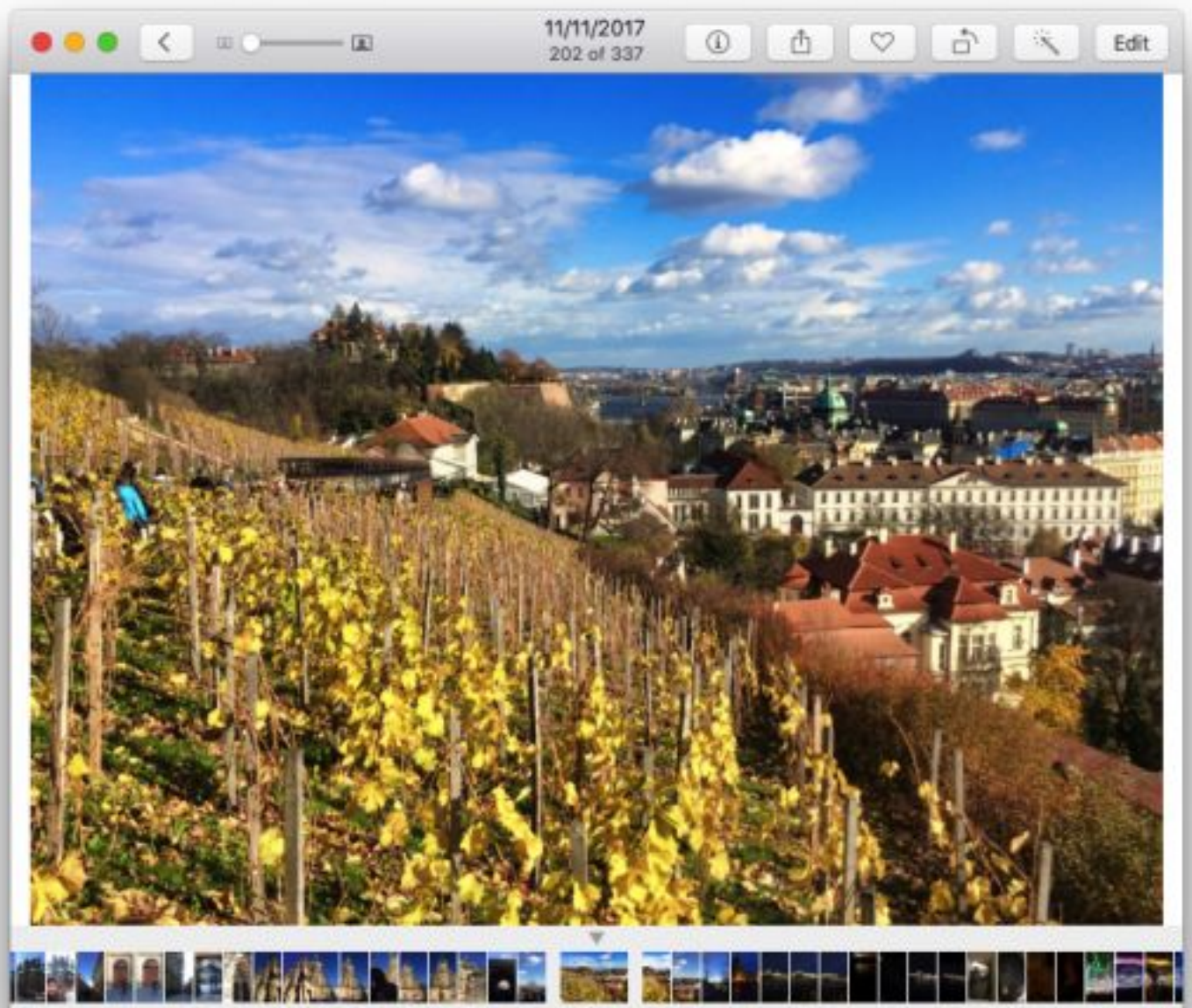
To install Photolemur as an extension, check the option in **System Preferences > Extensions**. To do that:

1. Open **System Preferences**
2. Click on **Extensions**
3. Locate Photolemur in the list and check the box next to it



To edit your image using Photolemur as a Photos extension:

1. Launch **Photos** and open your image



2. Click the **Edit** button in the upper right corner to open the editing menu



3. Click on **Extensions** and select **Photolemur**



After that, Photolemur will launch in extension mode and will start editing your image. After the magic is done, you can set the intensity of the adjustments using the Boost slider, or select a style you prefer.



When you're satisfied with the result, click **Save Changes**. The edited photo will automatically be saved to Photos.

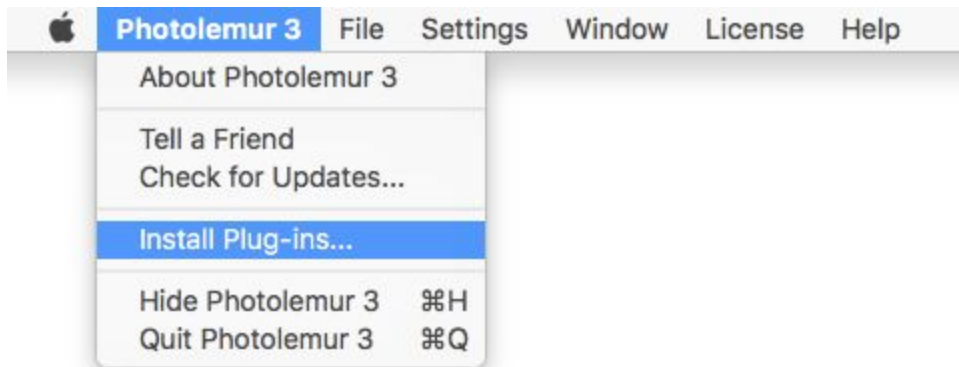
Chapter 5

Using Photolemur as a plugin

How to install Photolemur plugins

Photolemur can be used as a plugin in Adobe Photoshop CS5 or higher and Lightroom Classic CC.

To install the plugins, launch Photolemur and open its top menu. In the menu, select **Install Plugins**.



Then you'll see a window with the list of available plugins. To install a plugin, click the **Install** button next to Adobe Photoshop or Lightroom.



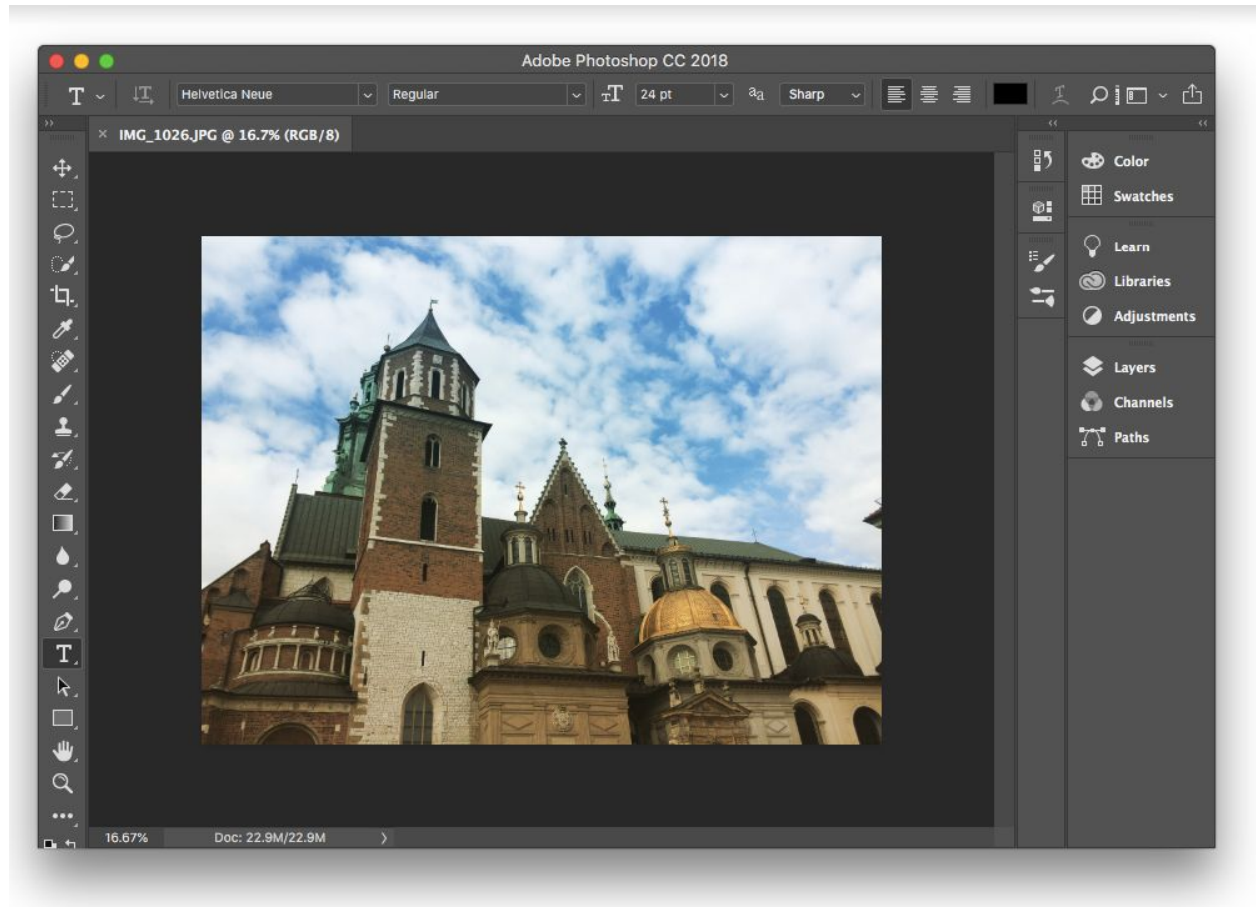
Then click **Done** and relaunch the app to apply changes.

How to use the Photolemur plugin in Photoshop

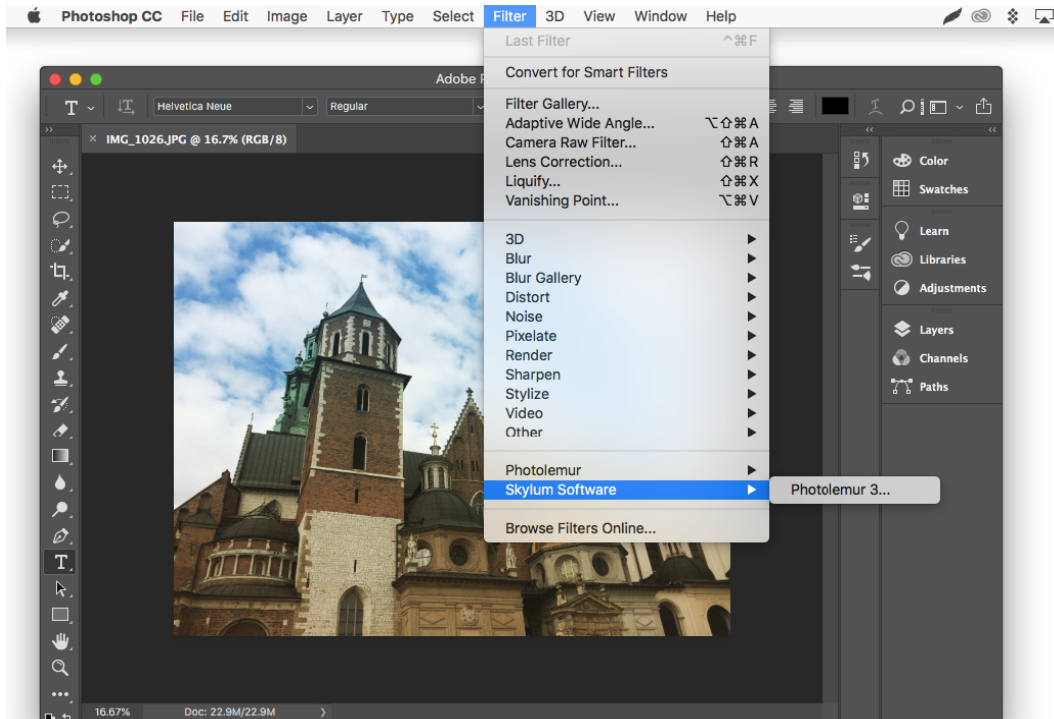
In Photoshop, Photolemur can be used for single image processing only.

To edit your photo with the Photolemur plugin for Photoshop:

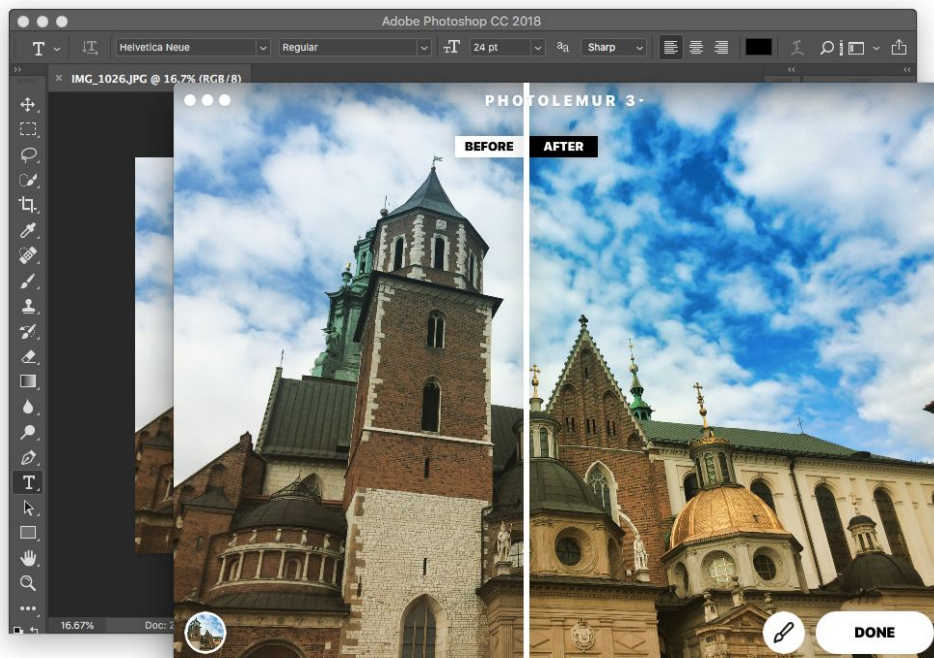
1. Launch Photoshop and open your photo.



2. In the top menu, click **Filter** and select **Skylum Software - Photolemur**.



3. Photolemur will start doing its magic. When it's done, you can use the slider to control the final result (the brush icon next to **Done**), select a style or save changes (**Done**).



When you click **Done**, Photolemur's adjustments will be applied to your photo.

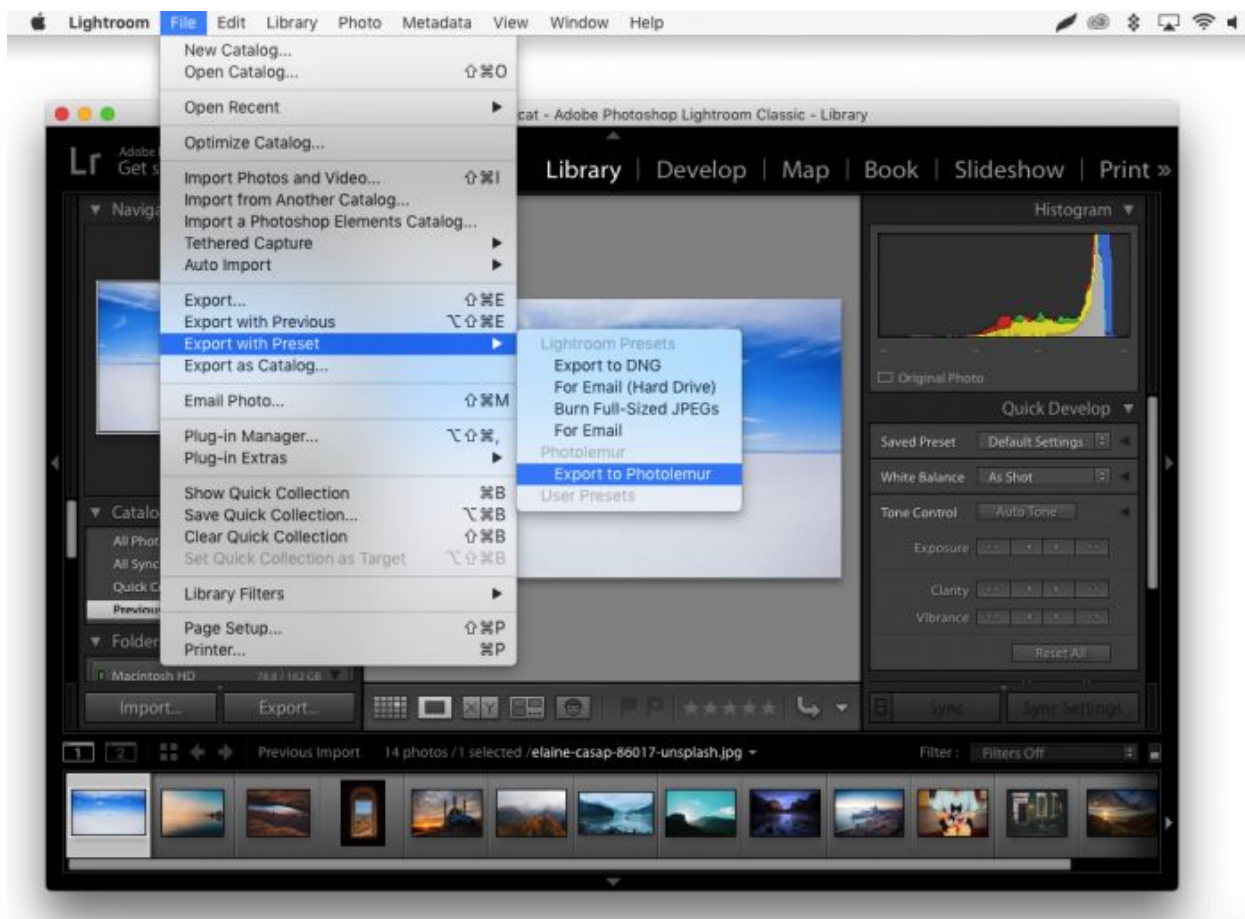
How to use the Photolemur plugin in Lightroom

In Lightroom, you can use Photolemur for both single image processing and batch image processing.

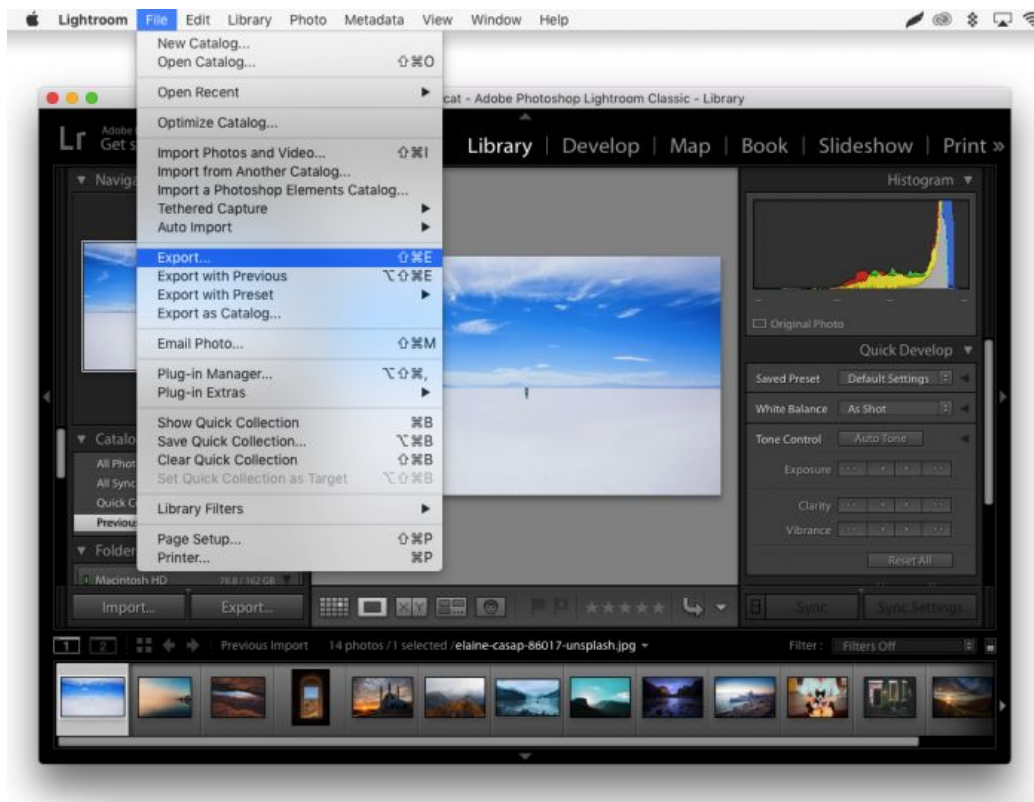
To edit a single image, open it in Lightroom and then export to Photolemur. For batch processing, select a batch of photos and then export them to Photolemur.

In Lightroom, there are three ways to export your photos to Photolemur:

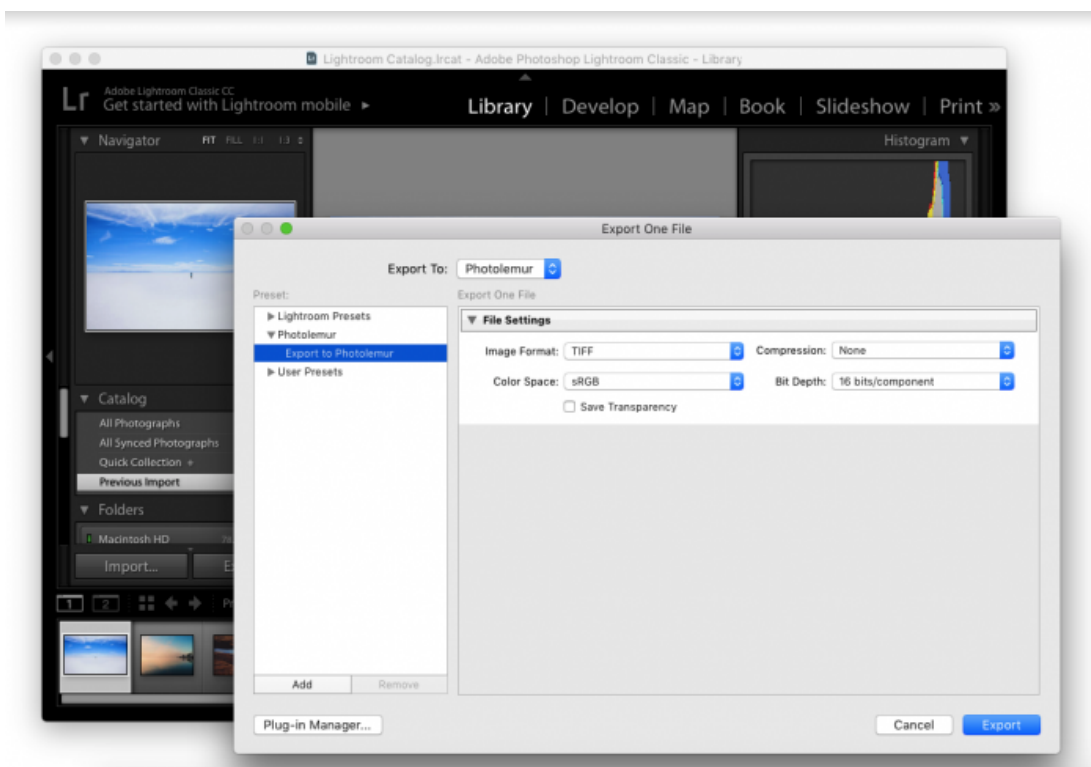
1. Click File and select **Export with preset**. Then click **Export to Photolemur**.



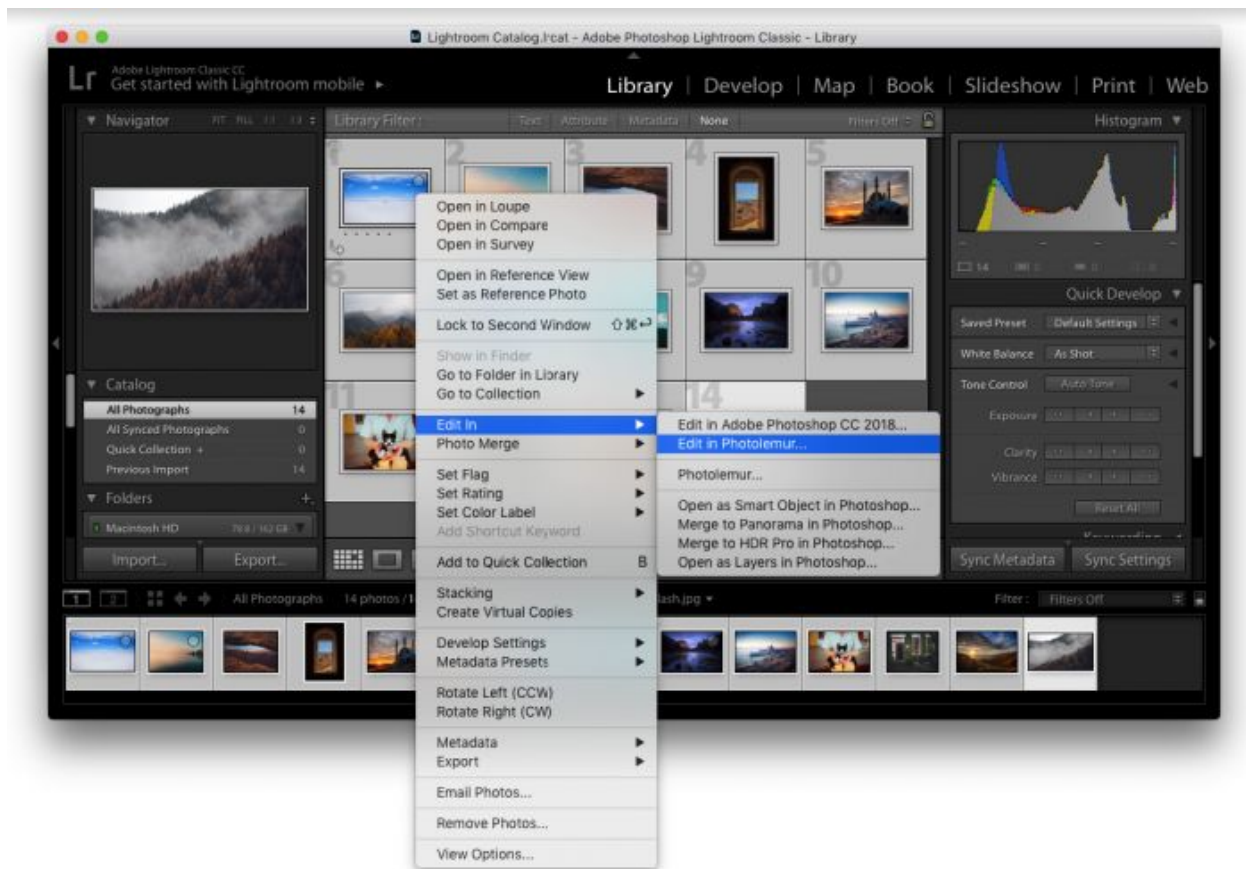
2. Click **File** and select **Export**.



This will bring up the Lightroom export window where you can select **Export to Photolemur** and then click **Export**.



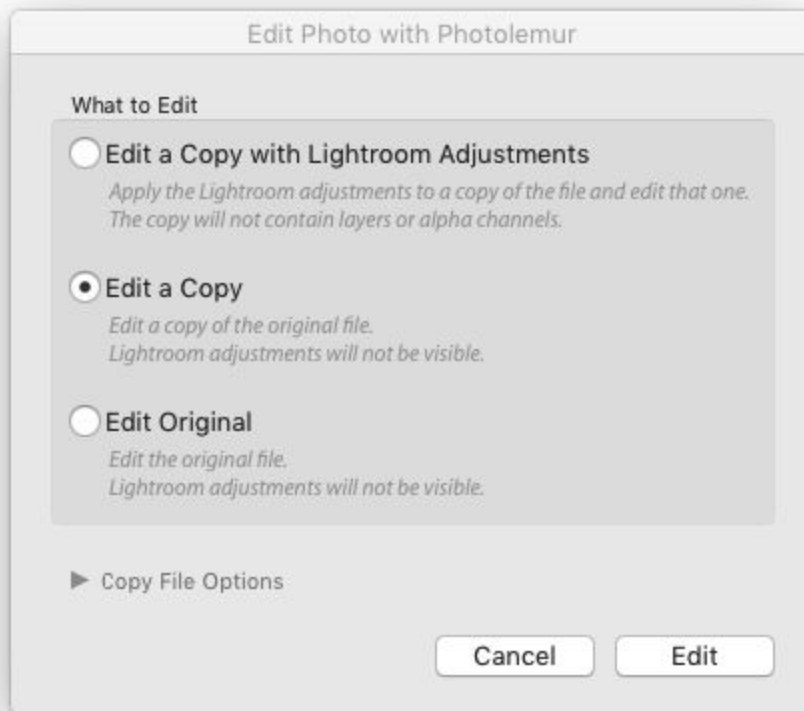
3. Right-click on your photo and select **Edit in**. Then select **Edit in Photolemur**.



Note

This method should be used for single image processing only.

Selecting **Edit in Photolemur** will open a Lightroom export window where you can choose how to export your photo.



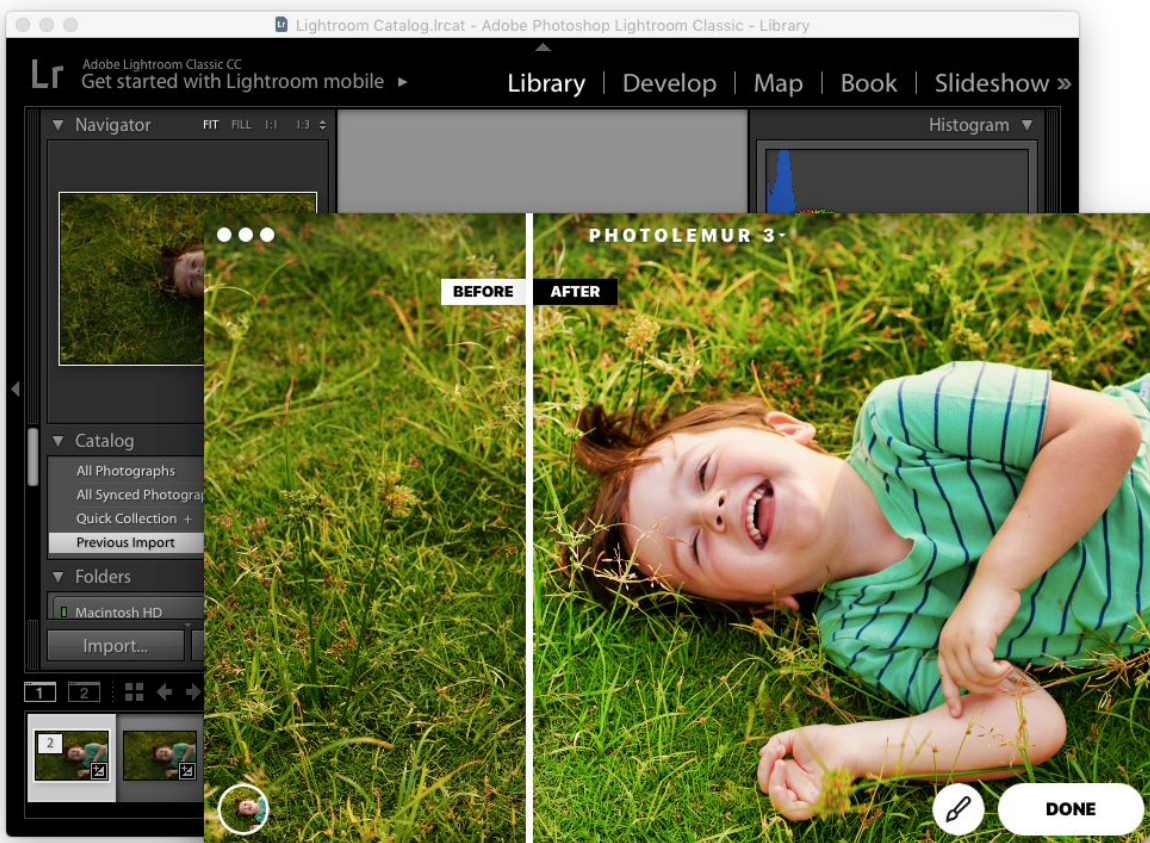
If you've already made earlier adjustments in Lightroom and you want Photolemur to edit your photo after these adjustments, choose **Edit a copy with Lightroom adjustments**.

You can also edit your original photo if you haven't made any adjustments in Lightroom yet. In this case, the enhanced photo will overwrite your original, so make sure you want that to happen before choosing this option.

You can also edit a copy of a photo if you've made some adjustments but you want to have a different copy with Photolemur enhancements, for example, or if you want to keep your original photo.

When ready, click the **Edit** button to send the image to Photolemur.

After Photolemur is finished, you can switch between the before and after previews to see how your photo was improved, select a style you prefer, or you set the intensity of the adjustments with the Boost slider.



To save your photo back to Lightroom, click **Done** and your photo will appear as a new file in the **All Photographs** folder so that you still have your original photo.