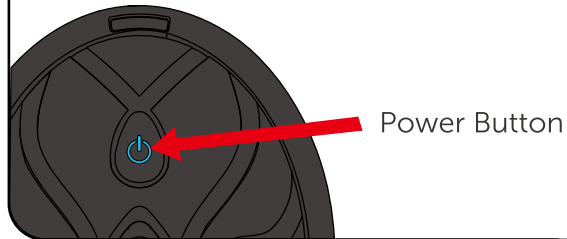


Instructions

1

Quick Press 1x = High Mode
Quick Press 2x = Low Mode
Press & Hold 2 seconds = Off

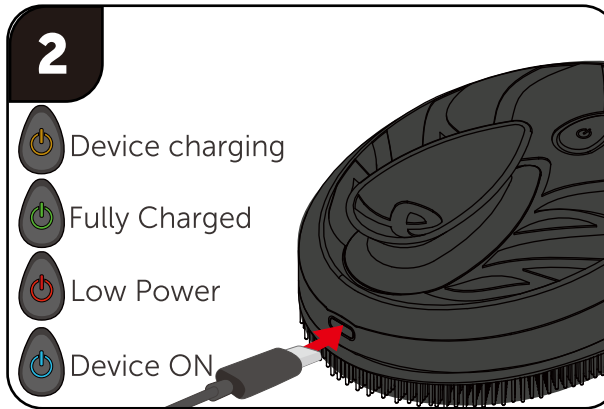


1. Power and Vibration Settings

A) Quick press the power button to power on the device. The LED will blink blue twice and send out 2 pulses indicating the device is in High Mode.
B) Quick press a second time to change to low vibration. The LED will blink blue once, and send out 1 pulse before the device starts running.
C) Press and hold power button for 2 seconds to power device off.

2

- Device charging
- Fully Charged
- Low Power
- Device ON



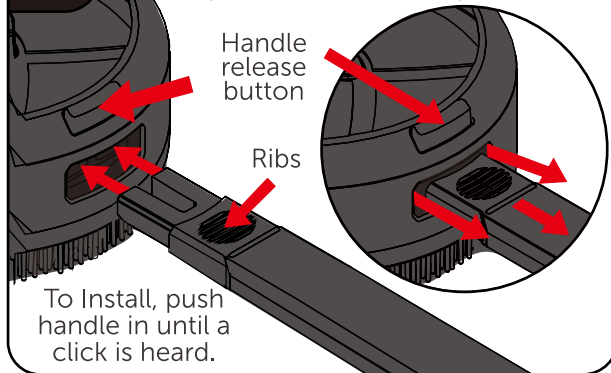
2. Charging the Unit

Charge unit using USB-C port and included charging cable as shown in image. Charge using any 5V USB power source. During charging, the LED light will turn yellow to indicate charging. Once the LED turns green, this indicates that the device is fully charged.

Note: If the LED is blinking red while powering on, it's time to recharge the device.

3

To Remove handle, press handle release button and pull handle away from scrubber body.



3. Inserting and Removing the Telescoping Handle To Install Handle

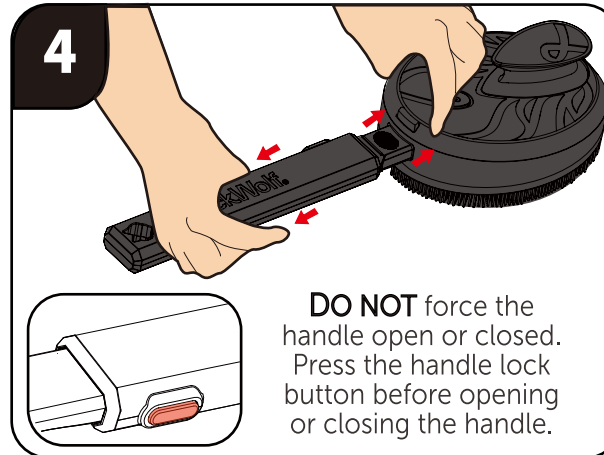
A) Hold handle with ribs facing up.
B) Slide handle into socket on scrubber (Image 3). Press until you hear the lock engage.

Note: Installing handle incorrectly will not allow lock to engage causing it to detach during use.

To Remove Handle

A) Press and hold the handle release button on the scrubber.
B) Hold handle from the ribs and pull handle away from scrubber. **Note: DO NOT attempt to pull handle without pressing the Handle Release Button.**

4



DO NOT force the handle open or closed. Press the handle lock button before opening or closing the handle.

4. Adjusting the Handle Length

To extend the handle of the scrubber: Press and hold the handle lock button on the side of the handle and gently pull the handle open. Once extended, the handle will lock into place.

To retract the handle: Press and hold the button on the side of the handle and retract handle. **Note: Always press and hold the handle lock button (Image 4) before extending or retracting the handle.**

sonic scrubber

vibrating face & body brush



INSTRUCTIONS

©2022 Allstar Innovations

Black Wolf is a registered trademark of Black Wolf Opco, Inc.

Made in China | Patent Pending
Product Color and Appearance May Vary

IM2

BC

PLEASE VISIT [BLACKWOLFNATION.COM](https://blackwolfnation.com) FOR
MORE GREAT PRODUCTS & SPECIAL OFFERS

Components



1x Face and Body Brush



1x USB-C Charging Cable



1x Telescoping Handle

Important safety instructions.
Please read all instructions before use.
Use this product only as indicated in these instructions.

WARNING:

- Water Resistant IPX 7 – can be used in the shower.
- The device is only intended for domestic/private use, and not for commercial use.
- The device is only intended for the purpose described in this instruction manual.
- To Reduce risk of electric shock, DO NOT get the product, or charging cable wet or immerse in water while charging.
- If you are under a doctors care for any skin condition or if you think you may have a skin condition, please consult your physician before use.
- Do not clean device with harsh chemical agents.
- Do not use the device on broken skin, or open wounds.
- Do not use on animals.
- If the product or its components are damaged, Please discard immediately. Do not attempt to repair, or disassemble the device.

CHOKING HAZARD:

Keep out of reach of children. Do not allow children to play with this device or its components. This is not a toy.

FCC Certified

This device complies with part 15 of the FCC Rules. Operation is subject to the following two conditions: (1) This device may not cause harmful interference, and (2) this device must accept any interference received, including interference that may cause undesired operation.

NOTE: This product has been tested and found to comply with the limits for a Class B digital device, pursuant to Part 15 of the FCC Rules. These limits are designed to provide reasonable protection against harmful interference in a residential installation. This equipment generates, uses and can radiate radio frequency energy and, if not installed and used in accordance with the instructions, may cause harmful interference to radio communications. However, there is no guarantee that interference will not occur in a particular installation. If this equipment does cause harmful interference to radio or television reception, which can be determined by turning the equipment off and on, the user is encouraged to try to correct the interference by one or more of the following measures:

- Reorient or relocate the receiving antenna.
- Increase the separation between the equipment and receiver.
- Connect the equipment into an outlet on a circuit different from that to which the receiver is connected.
- Consult the dealer or an experienced radio/TV technician for help.

Changes or modifications not expressly approved by the party responsible for compliance could void the user's authority to operate the equipment.

FAQ's

How should I clean the scrubber?

The scrubber is waterproof and can be cleaned with running the device under warm water. Use a liquid soap solution and rinse the device with water

The power light started to blink red.

The red LED blinking indicates that its time to recharge your device. Plug the provided USB-C charging cable and charge until LED turns green.

The handle is stuck after installing.

Ensure that you are pressing the Handle-lock button located on the scrubber body before pulling on the handle. Pulling on the handle without pressing the lock may cause damage to your device.

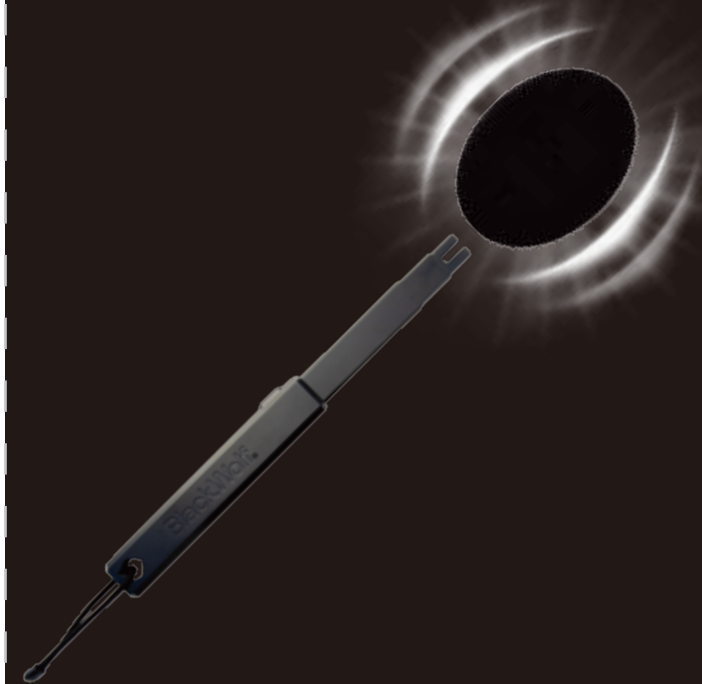
Why can't I close the handle?

Ensure that you are pressing and holding the button on the side of the handle. Forcing the handle closed may cause damage to your device.

Getting Started

Read all instructions before first use.

- Fully charge scrubber before use. Charge using the included USB-C cable. When the light on button is green, the device is fully charged and ready to use.
- Before using the device for the first time rinse the device with water.
- Apply body wash or face wash to the silicone bristles. For Optimal results we recommend using BlackWolf Charcoal Body Wash and BlackWolf Face Wash. Blackwolfnation.com
- Power on the device by quick pressing the power button. Quick press the power button to change speed settings. Press and hold the power button for two seconds to power the device off.
- After use, turn off the device rinse excess soap, and shake out any excess water.
- Use the included lanyard on the handle to hang the device when not in use.



PLEASE VISIT BLACKWOLFNATION.COM FOR MORE GREAT PRODUCTS & SPECIAL OFFERS