

# eco4life

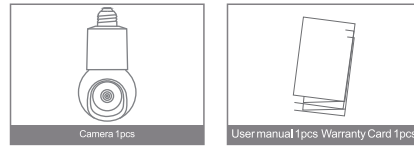
## Smart Bulb PTZ Camera



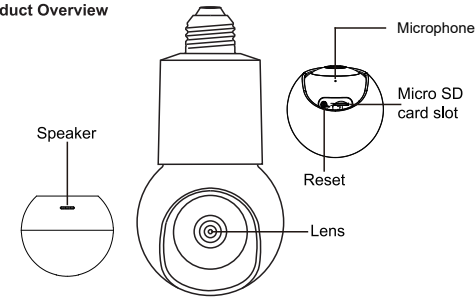
MODEL: SC-RIPC-2006

### Whats in the box?

#### Parts Guide



#### Product Overview



- SD card slot** Supports local SD Card storage (max. 256GB)
- Microphone** Captures sound for your video
- Reset** Press and hold the 'reset' for 5 seconds to reset the device (if you have modified settings, they will return to factory defaults)

1

### Installation

The smart home device only supports 2.4GHZ frequency, if your router supports the 2.4GHZ and 5GHZ frequency, the 5G network is usually labeled as "Router-5G", so please connect to the other one.

Each smart home device can only be registered to one account but it can be shared with others by using the sharing function of the app.

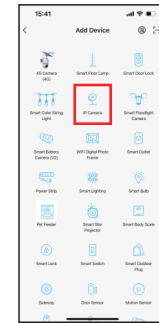
1. Download "eco4life" app from the Apple store or Google Play store or scan the below QR Code to download the "eco4life" app.



2. Follow the on the screen instructions to create account for eco4life.
3. Install the smart bulb camera into the bulb-holder.
4. Press the "+" icon in the top right corner of the app.
5. Press the "IP camera" icon from the list.

2

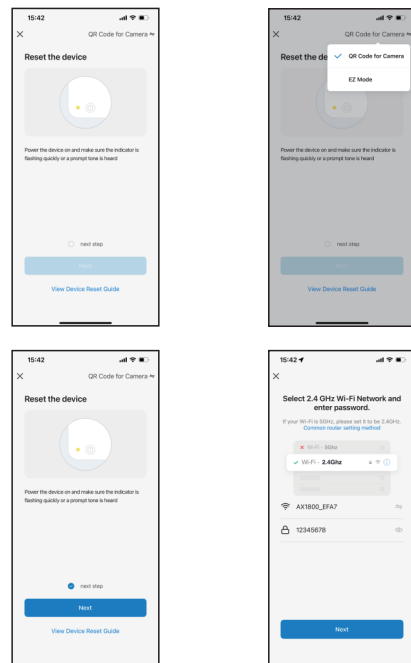
### Installation



5. Follow the instructions in the app to connect the camera
  - Select "QR Code for Camera" to add your camera, check the prompt and click "Next"
  - Select your "Wi-Fi network name" and input the password, press the "Next"
  - Use the camera to scan the QR Code on the phone, when heard a prompt tone, press "I Heard a Prompt"
  - After add the camera successfully, press "Done", you will get into the home page.

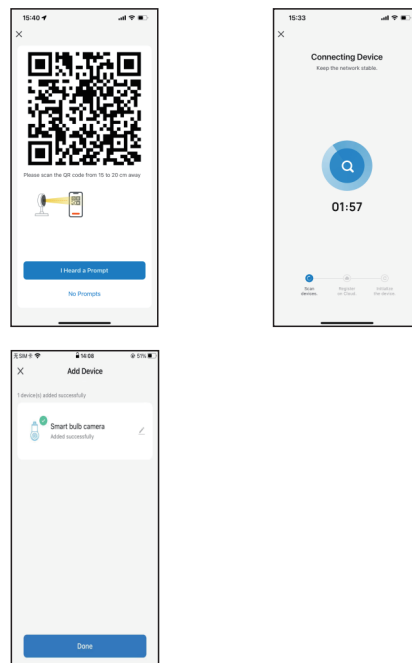
3

### Connecting to Device



4

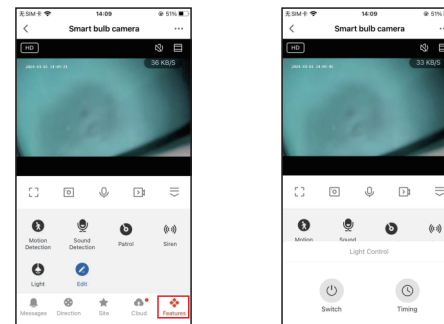
### Connecting to Device



5

### Remote control bulb

Press "Features", and Press "Light", then can Switch on/off the bulb, can set the timing to switch on/off the bulb.



6

7