

# S2-SB8

8" Alpine PrismaLink™ S-Series Preloaded Subwoofer Wedge Enclosure



## PRODUCT OVERVIEW

Experience your sound system in a whole new light with Alpine's PrismaLink™ Subwoofer Enclosures. These innovative subwoofer enclosures seamlessly blend style, performance, and expandability, delivering powerful bass with a visual lighting experience.

## PRODUCT FEATURES

**Illuminate your Sound System** – Color and sound collide to bring you an intentionally crafted wedge enclosure, designed for optimal bass performance and vehicle fitment, and an integrated RGB lighting system that's multi-link capable for single, dual, and even quad-enclosure installations.

**Multi-Link Lighting** - The PrismaLink™ Subwoofer Enclosures feature a pre-wired, RGB light integration in the enclosure trim bars that's able to connect across the optional subwoofer linking brackets (KTX-LK8, sold separately) for a brilliant, uninterrupted display of color that's controlled by an IR remote or the iLX-W670 Digital Multimedia Display with touchscreen lighting control.

**S-Series Performance** – PrismaLink™ Enclosures come preloaded with Alpine's next-generation S-Series Subwoofers, which feature a lightweight but rigid cone material and Alpine Proprietary High-Amplitude Multi-Roll (HAMR) surround that contribute to enhanced "punch" and accurate bass performance.



## AMP RECOMMENDATIONS



### S2-A60M

With 600W of RMS power, the S2-A60M Amplifier is power matched perfectly for two (2) S-Series 8" Subwoofers.



### S2-A120M

Delivering an impressive 1200W RMS of power at 1 and 2 ohm, the S2-A120M is the ideal solution to power up to four (4) Alpine S-Series 8" Subwoofers.

# S2-SB8

8" Alpine PrismaLink™ S-Series Preloaded Subwoofer Wedge Enclosure

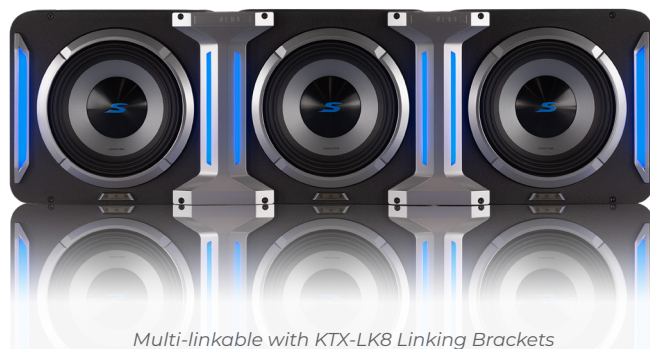


## MAIN FEATURES

- Preloaded S2-W8D4 8" S-Series Subwoofer
- Sealed Wedge Style Enclosure Design
- RGBW Multi-color Trim Bar Lighting with IR Remote
- 12 Static Colors, 4-Dynamic Modes
- Multi-Link Capable (Link 2 or more enclosures together)
- Lighting Link Control via iLX-W670
- Carbon Fiber / Poly Propylene Subwoofer Cone
- Lightweight Construction, High Output, Low Distortion
- Enhanced "Punch" and Accurate Bass
- High-Amplitude Multi-Roll (HAMR) Surround for High Excursion
- Compatible with the KTX-LK8 8" Linking Bracket for multi-link application

## TECH SPECS

- **Enclosure Dimensions:** 12.5" (W) x 11" (H) x 9.25" (D)
- **Power Handling:** 300W RMS / 900W Peak
- **Nominal Impedance:** 2Ω
- **Frequency Response:** 35Hz - 215Hz
- **Sensitivity:** 83dB
- **X-Max (1-Way):** 13mm
- **Voice Coil:** 1.4"
- **Magnet Weight:** 34oz
- Dual 4Ω voice coils wired in parallel for a 2Ω load



Multi-linkable with KTX-LK8 Linking Brackets

Re-configuration of impedance jumper will be required for 3 linked units

## ACCESSORIES



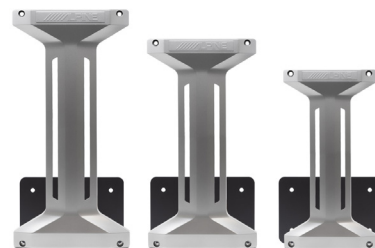
### iLX-W670

Control the Integrated RGBW Trim Bars on PrismaLink™ Enclosures with the Lighting Link control screen on the iLX-W670 Head Unit



### KTX-EBKT

Universal mounting brackets that mount directly to side of Alpine PrismaLink™ Subwoofers for Secure Installation



### KTX-LK8

8" Linking Bracket for Linking Multiple S2-SB8 PrismaLink™ Enclosures